

ATLANTA, GEORGIA

AL-26 (FAA)

25051

LOC/DME I-PKU 111.75 Chan 54 (Y)	APP CRS 275°	Rwy ldg TDZE Apt Elev 9000 998 1026
--	------------------------	---

ILS RWY 28 (SA CAT I)

HARTSFIELD/JACKSON ATLANTA INTL (ATL)

RNAV 1-GPS or RADAR required for procedure entry.
From TERII: RNAV 1-GPS required. DME or RADAR required.

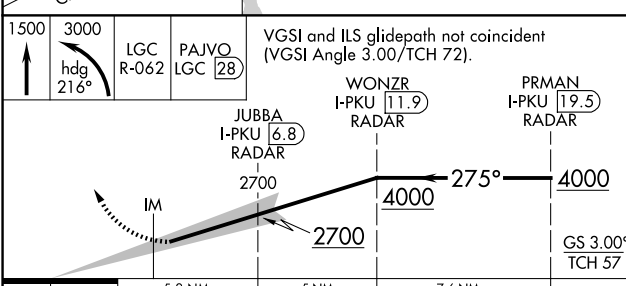
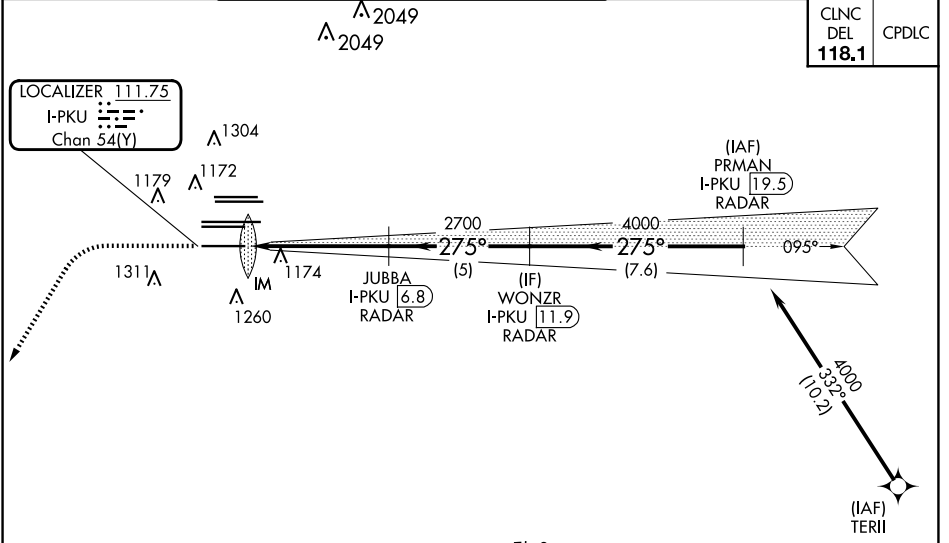
Simultaneous approach authorized.
Requires specific OPSPEC, MSPEC, or LOA approval.

ALSIF-2

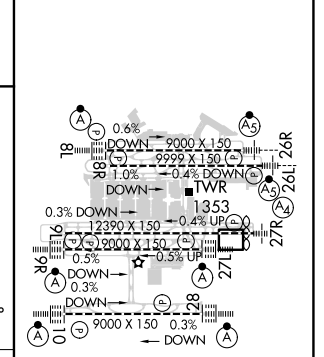
MISSED APPROACH: Climb to 1500 then climbing left turn to 3000 on heading 216° and LGC VORTAC R-062 to PAJVO/LGC 28 DME/RADAR and hold.

D-ATIS ARR 119.65	ATLANTA APP CON	ATLANTA TOWER				ALL RWYS	GND CON	ALL RWYS
DEP 125.55	127.9 379.9	8L-26R	8R-26L	9L-27R	9R-27L	10-28	(8L-26R,8R-26L) (9L-27R,9R-27L)	10-28
		119.1	125.325	123.85	119.3	119.5	254.4	121.9
								121.65
								254.4

CLNC DEL	CPDLC
118.1	



ELEV 1026	D TDZE 998
-----------	-------------------



CATEGORY	A	B	C	D
S-ILS 28	RA 264/14		150 DA 1148	
SA CATEGORY I ILS - SPECIAL AIRCREW & AIRCRAFT CERTIFICATION REQUIRED				

HIRL all Rwys
TDZ/CL Rwys 8L, 9R,
10, 26R, 27L and 28

ATLANTA, GEORGIA
Amdt 5 07OCT21

33°38'N-84°26'W

HARTSFIELD/JACKSON ATLANTA INTL (ATL)
ILS RWY 28 (SA CAT I)

SE-4, 20 FEB 2025 to 20 MAR 2025

SE-4, 20 FEB 2025 to 20 MAR 2025