

| | | | |
|---|------------------------|-----------------------------|---|
| LOC/DME I-HFW 109.3 Chan 30 | APP CRS 095° | Rwy Idg TDZE Apt Elev | 8800 1015 1026 |
|---|------------------------|-----------------------------|---|

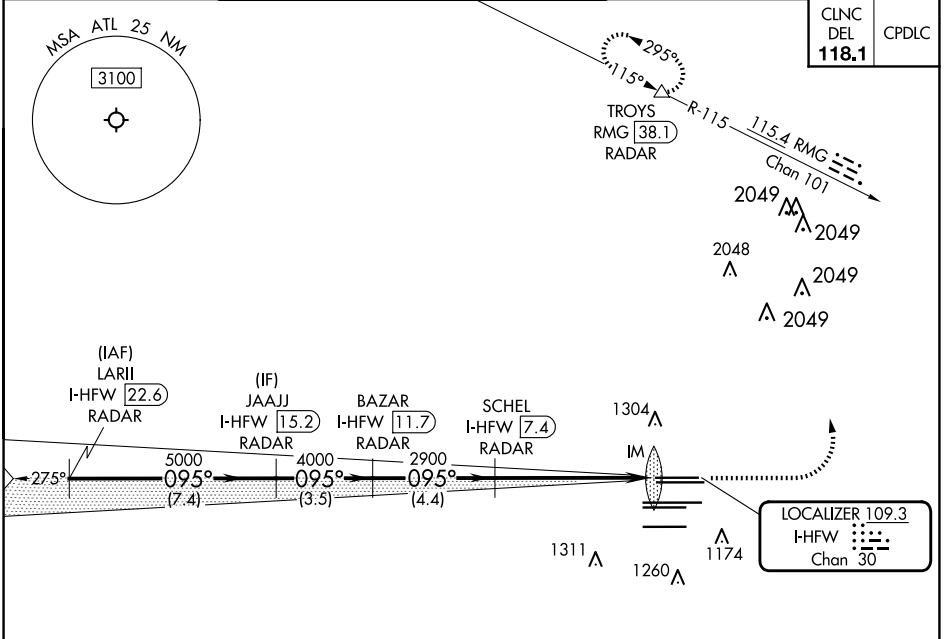
ILS RWY 8L (CAT II & III)

HARTSFIELD/JACKSON ATLANTA INTL (ATL)

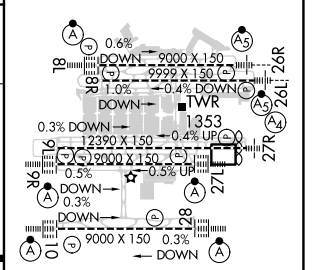
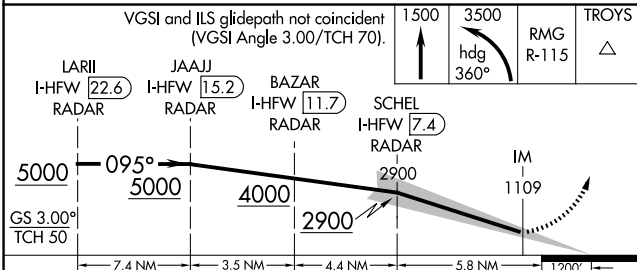
RADAR required for procedure entry. DME or RADAR required. **ALSIF-2** MISSED APPROACH: Climb to 1500 then climbing left turn to 3500 on heading 360° and RMG VORTAC R-115 to TROYS/RMG 38.1 DME/RADAR and hold.

Simultaneous approach authorized.

| | | | | | | | | |
|-----------------------------|--|--|--|--|--|--|--|--|
| D-ATIS ARR 119.65 | ATLANTA APP CON 127.9 379.9 | ATLANTA TOWER 8L-26R 8R-26L 9L-27R 9R-27L 10-28 RWYWS | | | | ALL RWYWS 119.3 119.5 254.4 | GND CON (8L-26R,8R-26L) (9L-27R,9R-27L) 10-28 | ALL RWYWS 121.9 121.75 121.65 254.4 |
|-----------------------------|--|--|--|--|--|--|--|--|



| | |
|-----------|--------------------|
| ELEV 1026 | D TDZE 1015 |
|-----------|--------------------|



| | | | | |
|----------|------------------------------|---|---|---|
| CATEGORY | A | B | C | D |
| S-ILS 8L | CAT II RA 105/12 100 DA 1115 | | | |
| S-ILS 8L | CAT III RVR 06 | | | |

HIRL all RwyS
TDZ/CL RwyS 8L, 9R, 10, 26R,
27L and 28

CATEGORY II & III ILS SPECIAL AIRCREW & AIRCRAFT CERTIFICATION REQUIRED

SE-4, 20 FEB 2025 to 20 MAR 2025

SE-4, 20 FEB 2025 to 20 MAR 2025