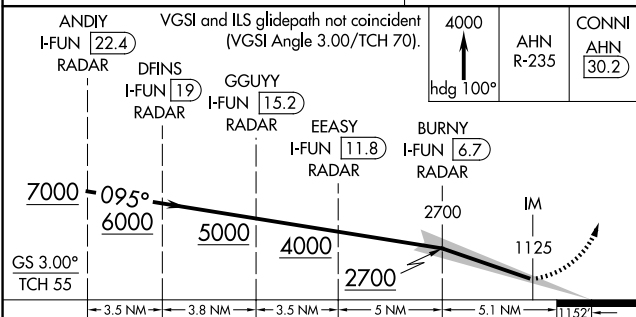
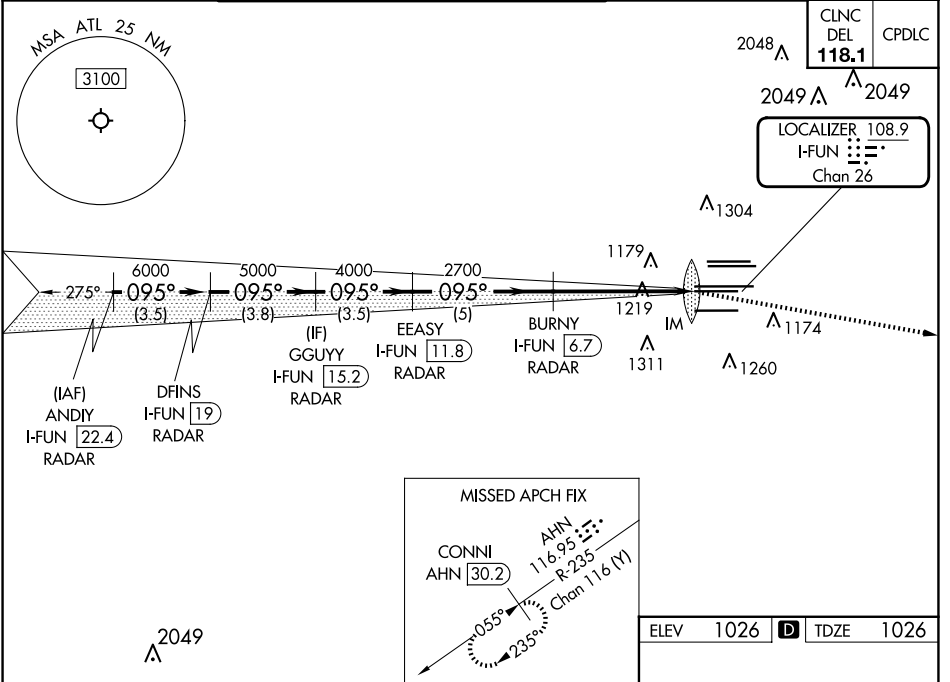


LOC/DME I-FUN <b>108.9</b> Chan <b>26</b>	APP CRS <b>095°</b>	Rwy Idg TDZE Apt Elev	<b>9000</b> <b>1026</b> <b>1026</b>
---	------------------------	-----------------------------	---

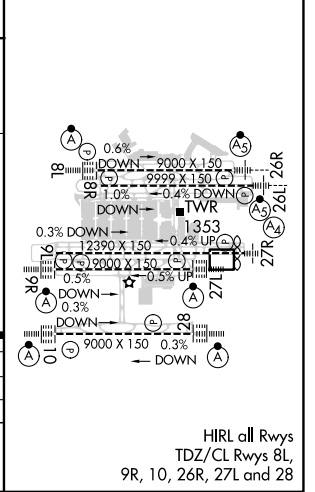
# ILS RWY 9R (CAT II & III)

HARTSFIELD/JACKSON ATLANTA INTL (ATL)

RADAR required for procedure entry, DME.		ALSF-2		MISSED APPROACH: Climb to 4000 on heading 100° and AHN VOR/DME R-235 to CONNI/AHN 30.2 DME and hold.	
Simultaneous approach authorized.					
D-ATIS ARR <b>119.65</b> DEP <b>125.55</b>	ATLANTA APP CON <b>127.9 379.9</b>	ATLANTA TOWER 8L-26R 8R-26L 9L-27R 9R-27L 10-28 RWYS			ALL RWYS <b>254.4</b>
		GND CON <b>121.9</b>		ALL RWYS <b>121.75 121.65 254.4</b>	



ELEV	1026	D	TDZE	1026
------	------	---	------	------



CATEGORY	A	B	C	D
S-ILS 9R	CAT II RA 118/12 100 DA 1126			
S-ILS 9R	CAT III RVR 03			

**CATEGORY II & III ILS - SPECIAL AIRCREW & AIRCRAFT CERTIFICATION REQUIRED**

HIRL all Rwy's  
TDZ/CL Rwy's 8L,  
9R, 10, 26R, 27L and 28

SE-4, 20 FEB 2025 to 20 MAR 2025

SE-4, 20 FEB 2025 to 20 MAR 2025