

LOC/DME I-FUN <b>108.9</b> Chan <b>26</b>	APP CRS <b>095°</b>	Rwy Idg TDZE Apt Elev <b>9000</b> <b>1026</b> <b>1026</b>
---	------------------------	--

# ILS RWY 9R (SA CAT I)

HARTSFIELD/JACKSON ATLANTA INTL (ATL)

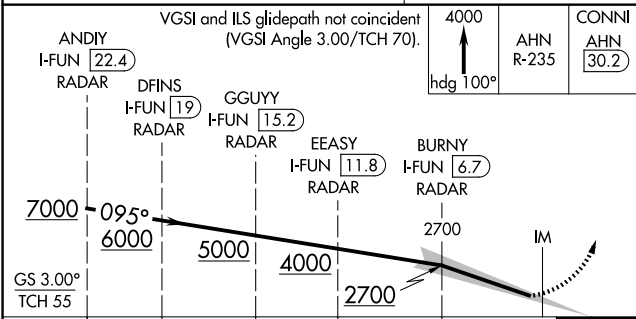
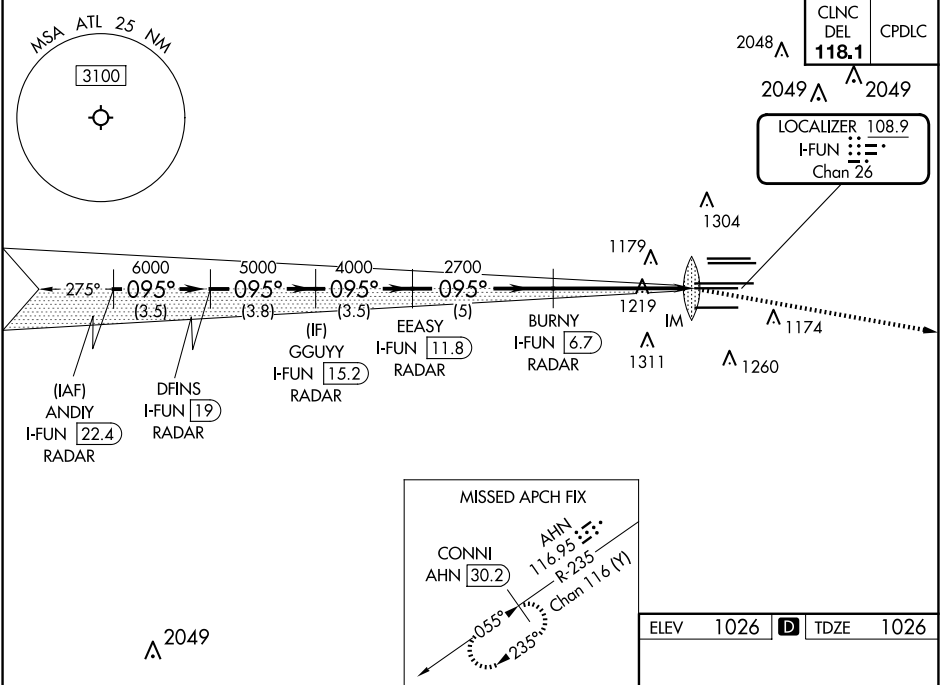
RADAR required for procedure entry, DME.

Simultaneous approach authorized.  
Requires specific OPSPEC, MSPEC, or LOA approval.

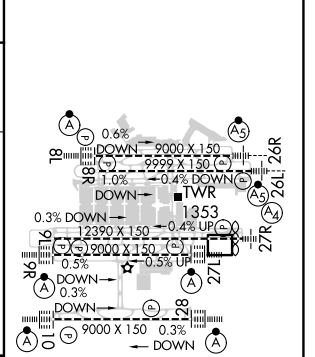
ALSF-2

MISSED APPROACH: Climb to 4000 on heading 100° and AHN VOR/DME R-235 to CONNI/AHN 30.2 DME and hold.

D-ATIS ARR <b>119.65</b>	ATLANTA APP CON <b>127.9 379.9</b>	ATLANTA TOWER				ALL RWYS	GND CON	ALL RWYS			
DEP <b>125.55</b>		8L-26R	8R-26L	9L-27R	9R-27L	10-28	(8L-26R,8R-26L)	(9L-27R,9R-27L)	10-28		
		<b>119.1</b>	<b>125.325</b>	<b>123.85</b>	<b>119.3</b>	<b>119.5</b>	<b>254.4</b>	<b>121.9</b>	<b>121.75</b>	<b>121.65</b>	<b>254.4</b>



ELEV	1026	TDZE	1026
------	------	------	------



SA CATEGORY I ILS - SPECIAL AIRCREW & AIRCRAFT CERTIFICATION REQUIRED

RA 196/14 150 DA 1176

HIRL all Rwy's  
TDZ/CL Rwy's 8L,  
9R, 10, 26R, 27L and 28

SE-4, 20 FEB 2025 to 20 MAR 2025

SE-4, 20 FEB 2025 to 20 MAR 2025