

LOC/DME I-OMO <b>111.55</b> Chan <b>52 (Y)</b>	APP CRS <b>095°</b>	Rwy Idg <b>9000</b> TDZE <b>1000</b> Apt Elev <b>1026</b>
--	------------------------	---

# ILS or LOC RWY 10

HARTSFIELD/JACKSON ATLANTA INTL (ATL)

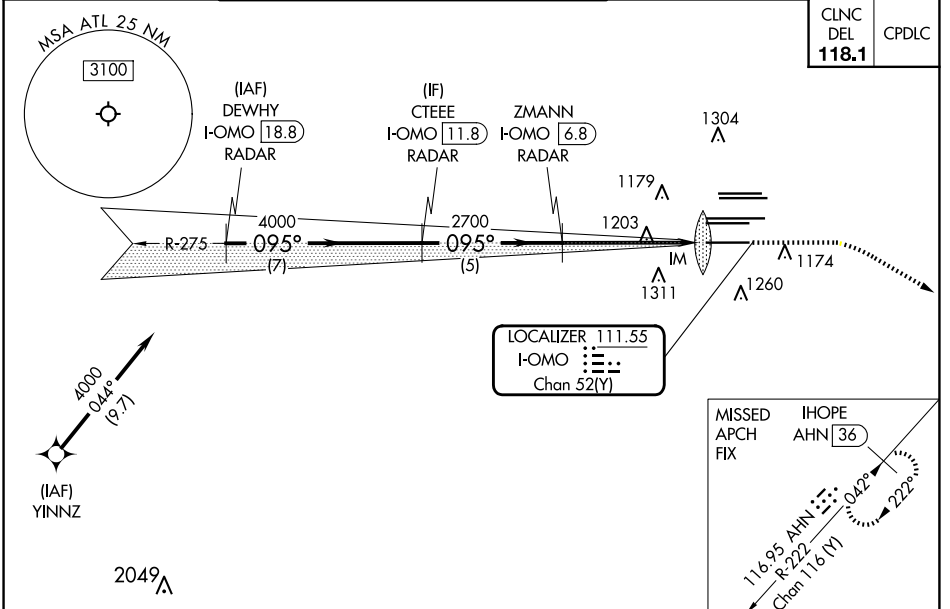
DME or RADAR required. RNP APCH - GPS from YINNZ.

Simultaneous approach authorized with Rwy 9L or 8R or 8L, or Rwy 9L and 8L. Localizer not suitable for electronic rollout guidance.

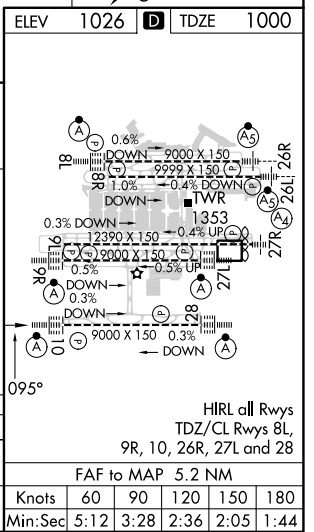
ALSF-2

MISSED APPROACH: Climb to 1400 then dimming right turn to 3000 on heading 120° and AHN R-222 to IHOPE/AHN 36 DME and hold.

D-ATIS ARR <b>119.65</b>	ATLANTA APP CON <b>127.9 379.9</b>	ATLANTA TOWER 8L-26R 8R-26L 9L-27R 9R-27L 10-28 RWYs					ALL RWYs	GND CON (8L-26R,8R-26L) (9L-27R,9R-27L)	10-28	ALL RWYs
DEP <b>125.55</b>	<b>127.9 379.9</b>	<b>119.1 125.325 123.85 119.3 119.5 254.4</b>	<b>121.9</b>	<b>121.75</b>	<b>121.65</b>	<b>254.4</b>				



ELEV 1026	TDZE 1000				
DEWHY I-OMO 18.8	CTEEE I-OMO 11.8	ZMANN I-OMO 6.8	I-OMO 2.9	I-OMO 1.7	IHOPE AHN 36
4000	4000	2700	2700		
7 NM	5 NM	3.9 NM	1.1	0.1	
GS 3.00°	TCH 55				
CATEGORY A	B	C	D		
S-ILS 10	1200/18		200 (200-½)		
S-LOC 10	1460/24	460 (500-½)	1460/45	460 (500-¾)	



SE-4, 20 FEB 2025 to 20 MAR 2025

SE-4, 20 FEB 2025 to 20 MAR 2025