

ATLANTA, GEORGIA

AL-26 (FAA)

25051

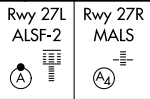
LOC/DME I-FSQ 108.5 Chan 22	APP CRS 275°	Rwy Idg 27L 8865	27R 11890
		TDZE 999	985
		Apt Elev 1026	1026

ILS or LOC RWY 27L

HARTSFIELD/JACKSON ATLANTA INTL (ATL)

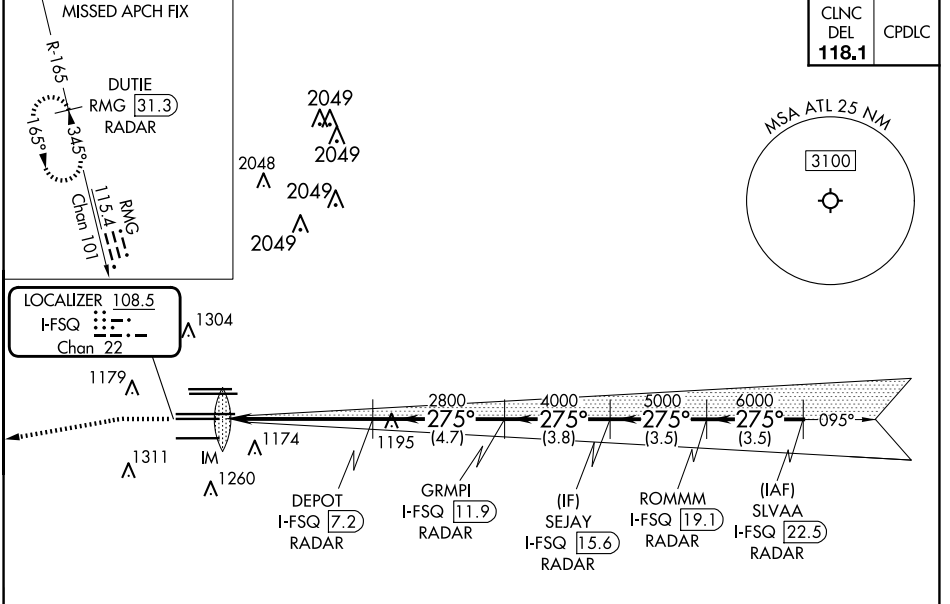
DME or RADAR required.
RADAR required for procedure entry.

Simultaneous approach authorized.
Inop table does not apply to Sidestep Rwy 27R.

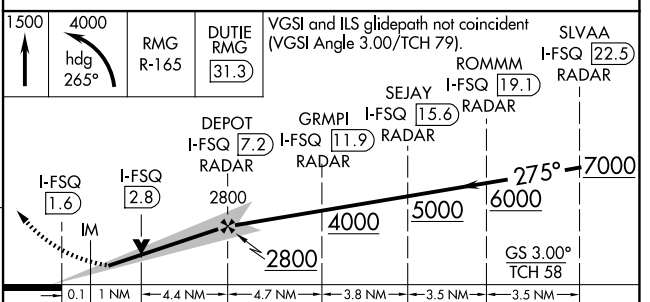
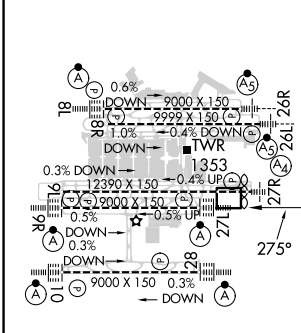


MISSED APPROACH: Climb to 1500 then climbing left turn to 4000 on heading 265° and RMG VORTAC R-165 to DUTIE/RMG 31.3 DME/RADAR and hold.

D-ATIS ARR 119.65	ATLANTA APP CON DEP 127.9 379.9	ATLANTA TOWER 8L-26R 8R-26L 9L-27R 9R-27L 10-28 RWYS				ALL RWYS 254.4	GND CON 10-28 RWYS 254.4	ALL RWYS 254.4
		119.1	125.325	123.85	119.3	119.5	121.9	121.75



ELEV 1026	TDZE 27L 999
	TDZE 27R 985



CATEGORY	A	B	C	D
S-ILS 27L	1199/18 200 (200-½)			
S-LOC 27L	1420/24	421 (400-½)	1420/40	421 (400-¾)
SIDESTEP 27R	1420-1½	435 (400-1½)	1420-2¼	435 (400-2¼)

Knots	60	90	120	150	180
Min:Sec	5:30	3:40	2:45	2:12	1:50

ATLANTA, GEORGIA
Amdt 19 22APR21

33°38'N-84°26'W

HARTSFIELD/JACKSON ATLANTA INTL (ATL)

ILS or LOC RWY 27L

SE-4, 20 FEB 2025 to 20 MAR 2025

SE-4, 20 FEB 2025 to 20 MAR 2025