

ATLANTA, GEORGIA

AL-26 (FAA)

25051

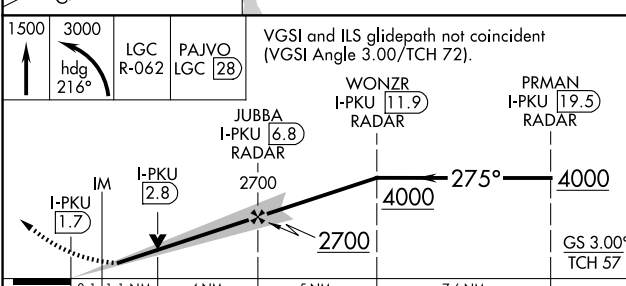
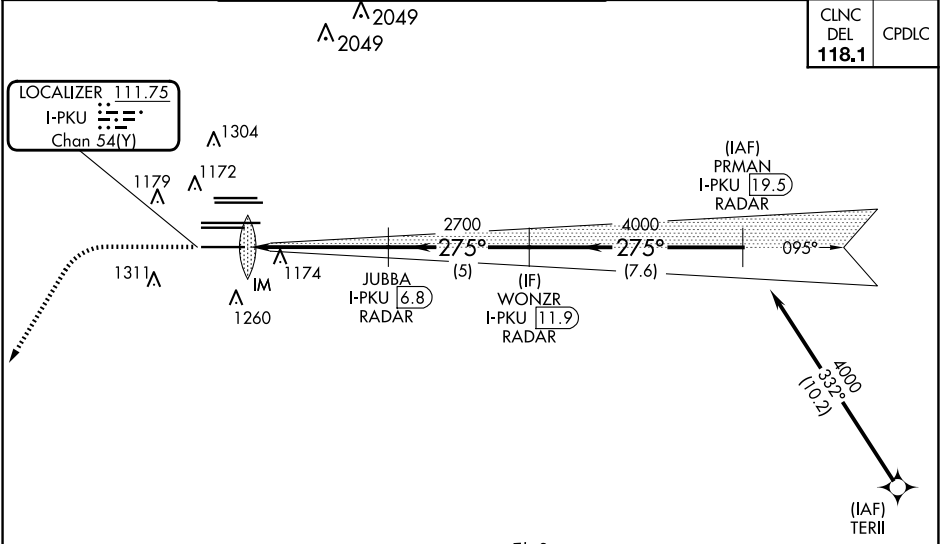
LOC/DME I-PKU <b>111.75</b> Chan <b>54(Y)</b>	APP CRS <b>275°</b>	Rwy ldg TDZE <b>998</b> Apt Elev <b>1026</b>
---	------------------------	--

# ILS or LOC RWY 28

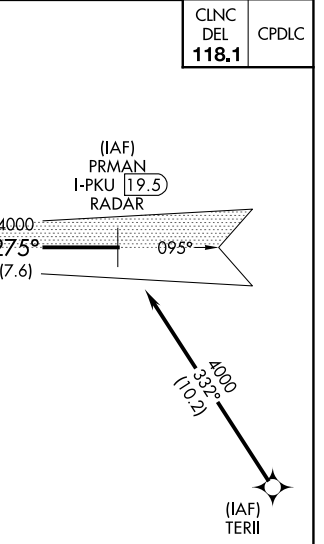
HARTSFIELD/JACKSON ATLANTA INTL (ATL)

RNAV 1-GPS or RADAR required for procedure entry. From TERII: RNAV 1-GPS required. DME or RADAR required.	ALSF-2	MISSED APPROACH: Climb to 1500 then climbing left turn to 3000 on heading 216° and LGC VORTAC R-062 to PAJVO/LGC 28 DME/RADAR and hold.
Simultaneous approach authorized.		

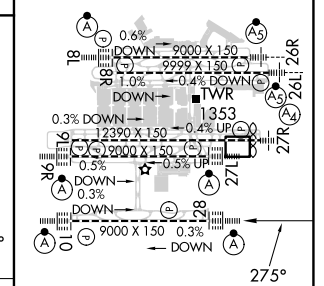
D-ATIS ARR <b>119.65</b>	ATLANTA APP CON 127.9 379.9	ATLANTA TOWER 8L-26R 8R-26L 9L-27R 9R-27L 10-28 RWYS 119.1 125.325 123.85 119.3 119.5 254.4	ALL RWYS 121.9	GND CON (8L-26R,8R-26L) (9L-27R,9R-27L) 10-28 RWYS 121.75	ALL RWYS 254.4
-----------------------------	-----------------------------------	---	----------------------	---	----------------------



CATEGORY	A	B	C	D
S-ILS 28	1198/18		200 (200-1/2)	
S-LOC 28	1440/24	442 (500-1/2)	1440/45	442 (500-7/8)



ELEV 1026	TDZE 998
-----------	----------



HIRL all Rwy's					
TDZ/CL Rwy's 8L, 9R, 10, 26R, 27L and 28					
FAF to MAP 5.2 NM					
Knots	60	90	120	150	180
Min:Sec	5:12	3:28	2:36	2:05	1:44

ATLANTA, GEORGIA  
Amdt 5 07OCT21

33°38'N-84°26'W

# HARTSFIELD/JACKSON ATLANTA INTL (ATL)

## ILS or LOC RWY 28

SE-4, 20 FEB 2025 to 20 MAR 2025

SE-4, 20 FEB 2025 to 20 MAR 2025