

# ILS PRM RWY 9R (CLOSE PARALLEL)

HARTSFIELD/JACKSON ATLANTA INTL (ATL)

LOC/DME I-FUN <b>108.9</b> Chan <b>26</b>	APP CRS <b>095°</b>	Rwy Idg <b>9000</b> TDZE <b>1026</b> Apt Elev <b>1026</b>
---	------------------------	---

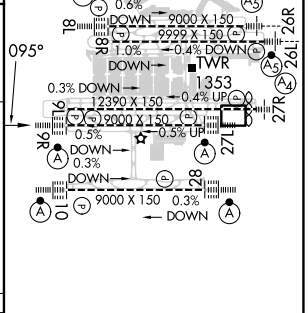
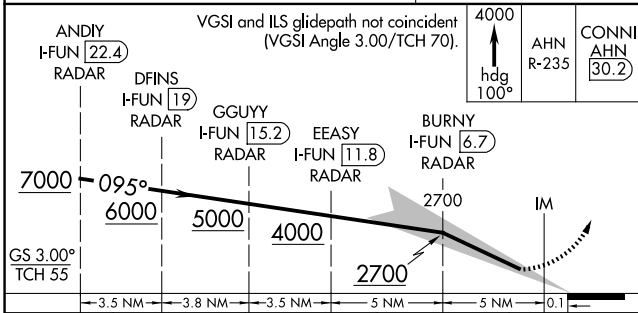
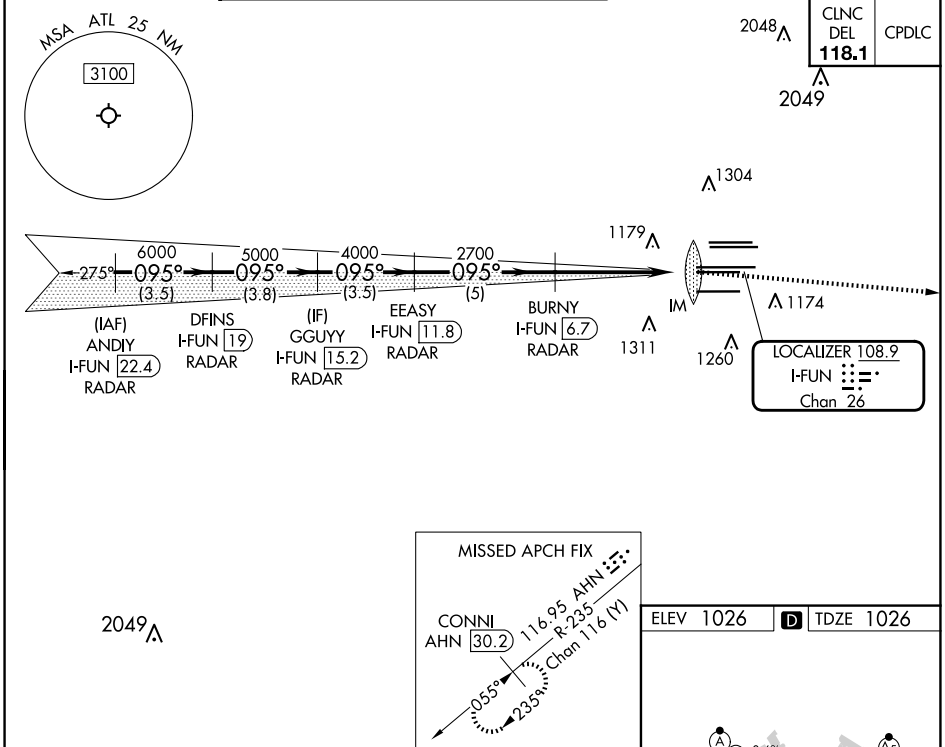
RADAR required for procedure entry, DME.

Simultaneous approach authorized. Use of FD or AP required during simultaneous operations. Dual VHF comm required. See additional requirements on AAUP.

ALSF-2

MISSED APPROACH: Climb to 4000 on heading 100° and AHN VOR/DME R-235 to CONNI/AHN 30.2 DME and hold.

D-ATIS ARR <b>119.65</b> DEP <b>125.55</b>	ATLANTA APP CON <b>127.9 379.9</b>	ATLANTA TOWER 8L-26R 8R-26L 9L-27R 9R-27L 10-28 RWYS <b>119.1 125.325 123.85 119.3 119.5 254.4</b> <b>PRM 132.55</b>	ALL RWYS (8L-26R,8R-26L) (9L-27R,9R-27L) 10-28 RWYS <b>121.9 121.75 121.65 254.4</b>	GND CON <b>121.9 121.75 121.65 254.4</b>
--	--	---	---	---



CATEGORY	A	B	C	D
S-ILS 9R	1226/18		200 (200-1/2)	

HIRL all Rwy's  
TDZ/CL Rwy's 8L, 9R, 10, 26R, 27L and 28