

ATLANTA, GEORGIA

AL-26 (FAA)

25051 ILS PRM RWY 9R (CAT II & III)

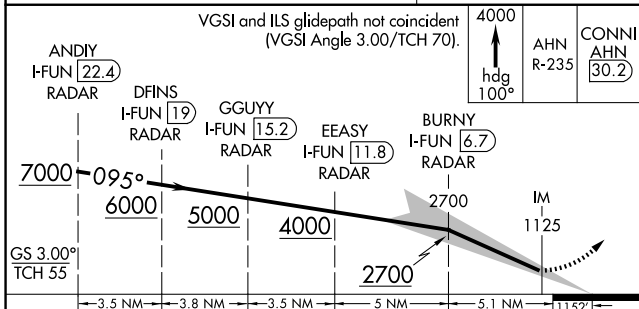
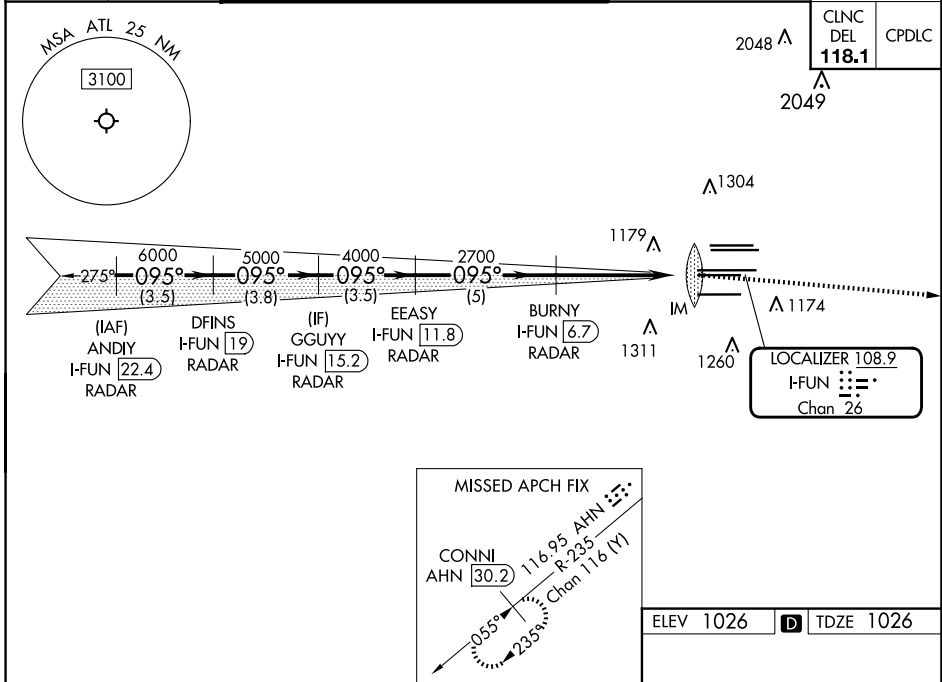
(CLOSE PARALLEL)

HARTSFIELD/JACKSON ATLANTA INTL (ATL)

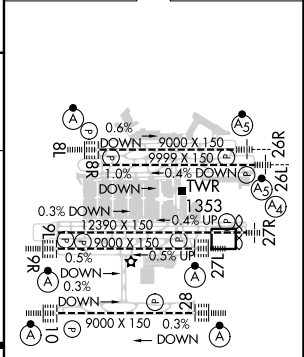
| | | |
|---|------------------------|--|
| LOC/DME I-FUN 108.9 Chan 26 | APP CRS 095° | Rwy Idg TDZE Apt Elev 9000 1026 1026 |
|---|------------------------|--|

| | | | |
|--|--|------------|--|
| RADAR required for procedure entry, DME. | | ALSf-2 | MISSED APPROACH: Climb to 4000 on heading 100° and AHN VOR/DME R-235 to CONNI/AHN 30.2 DME and hold. |
| <p>Simultaneous approach authorized. Use of FD or AP required during simultaneous operations. Dual VHF comm required. See additional requirements on AAUP.</p> | | | |

| | | | | | | | |
|--|--|---|--|--|--|-----------------------------|---|
| D-ATIS ARR 119.65 DEP 125.55 | ATLANTA APP CON 127.9 379.9 | ATLANTA TOWER 8L-26R 8R-26L 9L-27R 9R-27L 10-28 RWYS 119.1 125.325 123.85 119.3 119.5 254.4 PRM 132.55 | | | | ALL RWYS 254.4 | GND CON (8L-26R,8R-26L) (9L-27R,9R-27L) 10-28 RWYS 121.9 121.75 121.65 254.4 |
|--|--|---|--|--|--|-----------------------------|---|



| | |
|-----------|---|
| ELEV 1026 | <input checked="" type="checkbox"/> TDZE 1026 |
|-----------|---|



| | | | | |
|--|------------------------------|---|---|---|
| CATEGORY | A | B | C | D |
| S-ILS 9R | CAT II RA 118/12 100 DA 1126 | | | |
| S-ILS 9R | CAT III RVR 03 | | | |
| CATEGORY II & III ILS SPECIAL AIRCREW & AIRCRAFT CERTIFICATION REQUIRED | | | | |

HIRL all Rwws
TDZ/CL Rwws 8L, 9R, 10, 26R,
27L and 28

SE-4, 20 FEB 2025 to 20 MAR 2025

SE-4, 20 FEB 2025 to 20 MAR 2025

ATLANTA, GEORGIA
Amdt 3 22APR21

33°38'N-84°26'W HARTSFIELD/JACKSON ATLANTA INTL (ATL)
ILS PRM RWY 9R (CAT II & III) (CLOSE PARALLEL)