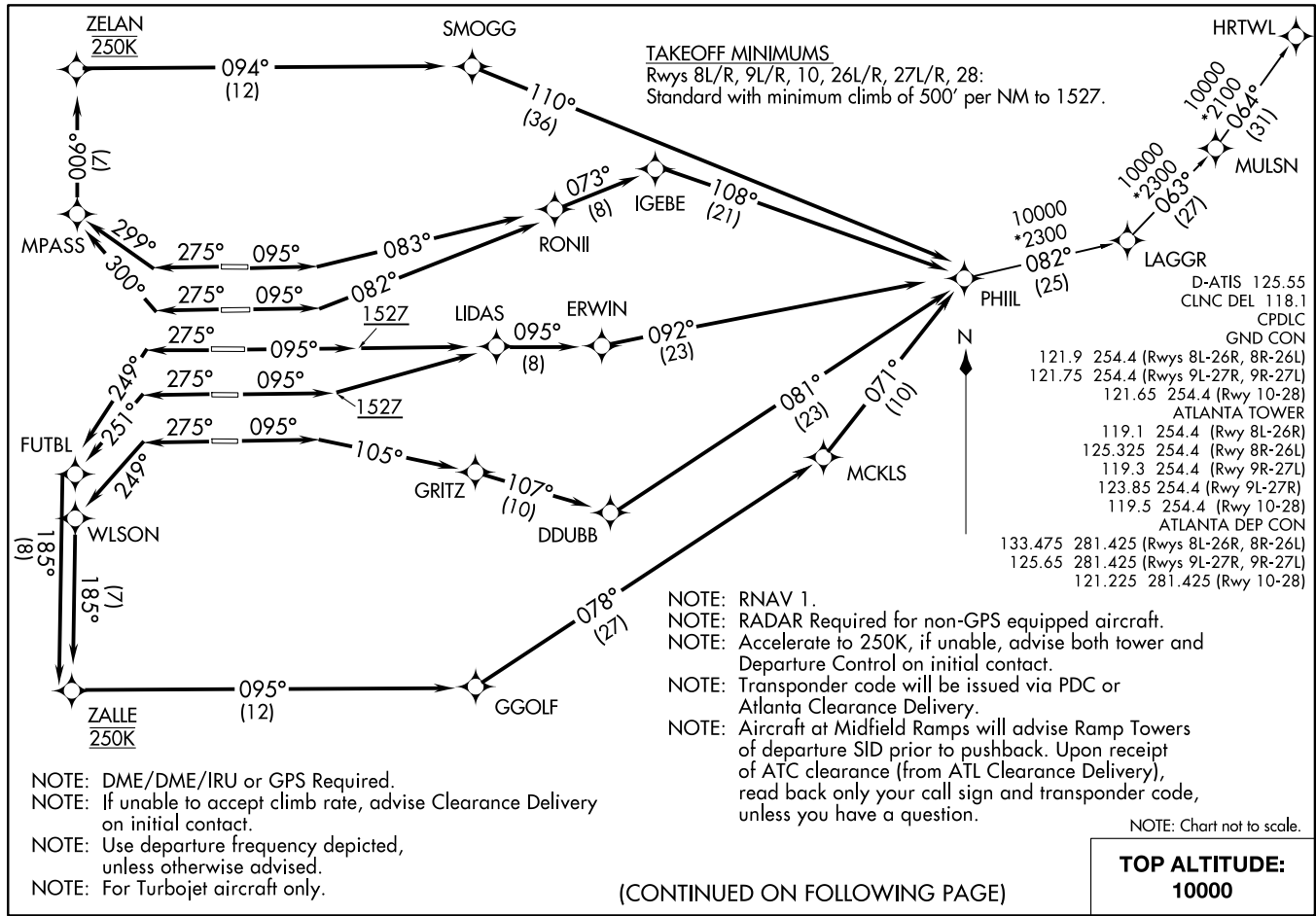


PHIL THREE DEPARTURE (RNAV)  
(PHIL3, PHIL) 070CT121

HARTSFIELD/JACKSON ATLANTA INTL (ATL)  
ATLANTA, GEORGIA



PHIL THREE DEPARTURE (RNAV)  
(PHIL3, PHIL) 24305

HARTSFIELD/JACKSON ATLANTA INTL (ATL)  
ATLANTA, GEORGIA

D-ATIS 125.55	
CLNC DEL 118.1	
CPDLC	
GND CON	
121.9	254.4 (Rwys 8L-26R, 8R-26L)
121.75	254.4 (Rwys 9L-27R, 9R-27L)
121.65	254.4 (Rwy 10-28)
ATLANTA TOWER	
119.1	254.4 (Rwy 8L-26R)
125.325	254.4 (Rwy 8R-26L)
119.3	254.4 (Rwy 9R-27L)
123.85	254.4 (Rwy 9L-27R)
119.5	254.4 (Rwy 10-28)
ATLANTA DEP CON	
133.475	281.425 (Rwys 8L-26R, 8R-26L)
125.65	281.425 (Rwys 9L-27R, 9R-27L)
121.225	281.425 (Rwy 10-28)



DEPARTURE ROUTE DESCRIPTION  
SEE ADDITIONAL REQUIREMENTS ON AAUP

TAKEOFF RUNWAY 8L: Climb on heading 095° to intercept course 083° to RONII, then on depicted route to PHIL, thence. . . .

TAKEOFF RUNWAY 8R: Climb on heading 095° to intercept course 082° to RONII, then on depicted route to PHIL, thence. . . .

TAKEOFF RUNWAYS 9L/R: Climb on heading 095° to 1527, then direct LIDAS, then on depicted route to PHIL, thence. . . .

TAKEOFF RUNWAY 10: Climb on heading 095° to intercept course 105° to GRITZ, then on depicted route to PHIL, thence. . . .

TAKEOFF RUNWAY 26L: Climb on heading 275° to intercept course 300° to MPASS, then on depicted route to PHIL, maintain 250K to ZELAN, thence. . . .

TAKEOFF RUNWAY 26R: Climb on heading 275° to intercept course 299° to MPASS, then on depicted route to PHIL, maintain 250K to ZELAN, thence. . . .

TAKEOFF RUNWAY 27L: Climb on heading 275° to intercept course 251° to FUTBL, then on depicted route to PHIL, maintain 250K to ZALLE, thence. . . .

TAKEOFF RUNWAY 27R: Climb on heading 275° to intercept course 249° to FUTBL, then on depicted route to PHIL, maintain 250K to ZALLE, thence. . . .

TAKEOFF RUNWAY 28: Climb on heading 275° to intercept course 249° to WLSO, then on depicted route to PHIL, maintain 250K to ZALLE, thence. . . .

. . . .maintain 10000. Expect clearance to filed altitude ten minutes after departure.

HRTWL TRANSITION (PHIL3.HRTWL)

SE-4, 20 FEB 2025 to 20 MAR 2025

SE-4, 20 FEB 2025 to 20 MAR 2025