

PLMMR THREE DEPARTURE (RNAV)
(PLMMR3, PLMMR) 08SEP22

HARTSFIELD/JACKSON ATLANTA INTL (ATL)
ATLANTA, GEORGIA

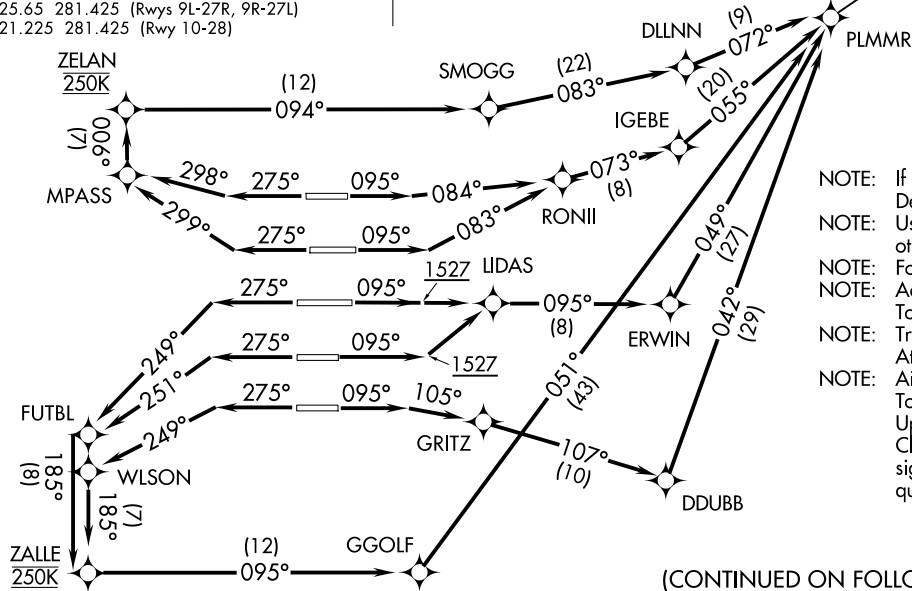
D-ATIS
125.55
CLNC DEL
118.1
CPDLC
GND CON
121.9 254.4 (Rwys 8L-26R, 8R-26L)
121.75 254.4 (Rwys 9L-27R, 9R-27L)
121.65 254.4 (Rwy 10-28)
ATLANTA TOWER
119.1 254.4 (Rwy 8L-26R)
125.325 254.4 (Rwy 8R-26L)
119.3 254.4 (Rwy 9R-27L)
123.85 254.4 (Rwy 9L-27R)
119.5 254.4 (Rwy 10-28)
ATLANTA DEP CON
133.475 281.425 (Rwys 8L-26R, 8R-26L)
125.65 281.425 (Rwys 9L-27R, 9R-27L)
121.225 281.425 (Rwy 10-28)

**TOP ALTITUDE:
10000**

RNAV 1 - DME/DME/IRU or GPS.
RADAR required for non-GPS equipped aircraft.

TAKEOFF MINIMUMS

Rwys 8L/R, 9L/R, 10, 26L/R, 27L/R, 28:
Standard with minimum climb of 500'
per NM to 1527.



- NOTE: If unable to accept climb rate, advise Clearance Delivery on initial contact.
- NOTE: Use departure frequency depicted, unless otherwise advised.
- NOTE: For Turbojet aircraft only.
- NOTE: Accelerate to 250K, if unable, advise both Tower and Departure Control on initial contact.
- NOTE: Transponder code will be issued via PDC or Atlanta Clearance Delivery.
- NOTE: Aircraft at Midfield Ramps will advise Ramp Towers of departure SID prior to pushback. Upon receipt of ATC clearance (from ATL Clearance Delivery), readback only your call sign and transponder code, unless you have a question.

(CONTINUED ON FOLLOWING PAGE)

NOTE: Chart not to scale.

(PLMMR3, PLMMR) 24305
PLMMR THREE DEPARTURE (RNAV)

HARTSFIELD/JACKSON ATLANTA INTL (ATL)
ATLANTA, GEORGIA



DEPARTURE ROUTE DESCRIPTION
SEE ADDITIONAL REQUIREMENTS ON AAUP

TAKEOFF RUNWAY 8L: Climb on heading 095° to intercept course 084° to RONII, then on depicted route to PLMMR, thence. . . .

TAKEOFF RUNWAY 8R: Climb on heading 095° to intercept course 083° to RONII, then on depicted route to PLMMR, thence. . . .

TAKEOFF RUNWAYS 9L/R: Climb on heading 095° to 1527, then direct UDAS, then on depicted route to PLMMR, thence. . . .

TAKEOFF RUNWAY 10: Climb on heading 095° to intercept course 105° to GRITZ, then on depicted route to PLMMR, thence. . . .

TAKEOFF RUNWAY 26L: Climb on heading 275° to intercept course 299° to MPASS, then on depicted route to PLMMR, maintain 250K to ZELAN, thence. . . .

TAKEOFF RUNWAY 26R: Climb on heading 275° to intercept course 298° to MPASS, then on depicted route to PLMMR, maintain 250K to ZELAN, thence. . . .

TAKEOFF RUNWAY 27L: Climb on heading 275° to intercept course 251° to FUTBL, then on depicted route to PLMMR, maintain 250K to ZALLE, thence. . . .

TAKEOFF RUNWAY 27R: Climb on heading 275° to intercept course 249° to FUTBL, then on depicted route to PLMMR, maintain 250K to ZALLE, thence. . . .

TAKEOFF RUNWAY 28: Climb on heading 275° to intercept course 249° to WLSON, then on depicted route to PLMMR, maintain 250K to ZALLE, thence. . . .

. . . .(transition). Maintain 10000. Expect clearance to filed altitude ten minutes after departure.

BURGG TRANSITION (PLMMR3.BURGG)

SE-4, 20 FEB 2025 to 20 MAR 2025

SE-4, 20 FEB 2025 to 20 MAR 2025