

WAAS CH <b>56300</b> <b>W26A</b>	APP CRS <b>275°</b>	Rwy Idg <b>9999</b> TDZE <b>996</b> Apt Elev <b>1026</b>
--	------------------------	--

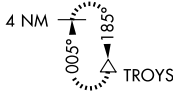
**RNAV (GPS) RWY 26L**  
HARTSFIELD/JACKSON ATLANTA INTL (ATL)

**▼** For uncompensated Baro-VNAV systems, LNAV/VNAV NA below -7°C (20°F) or above 54°C (130°F). DME/DME RNP-0.3 NA. For inop MALSRS, increase LPV all Cats visibility to RVR 4500, LNAV/VNAV all Cats visibility to RVR 6000. Simultaneous approach authorized with Rwy 27L or 27R or 28. LNAV procedure NA during simultaneous operations. Use of FD or AP providing RNAV track guidance required during simultaneous operations.

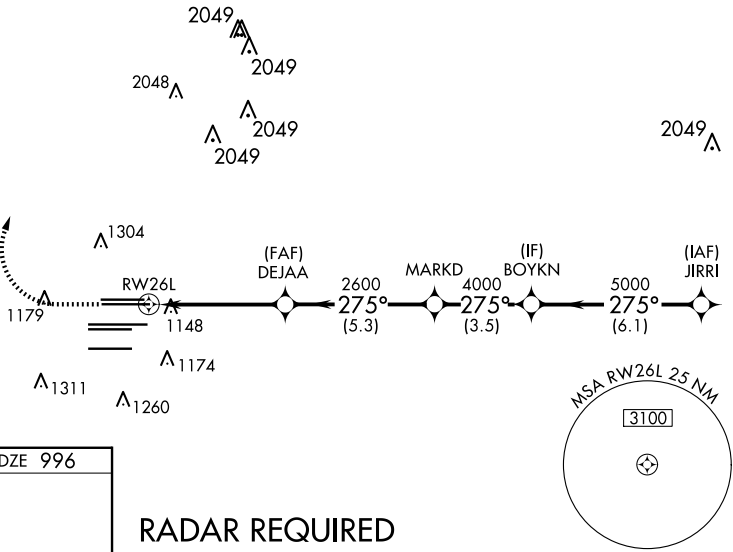


**MISSED APPROACH:**  
Climb to 1500 then climbing right turn to 3500 direct TROYS and hold.

D-ATIS ARR <b>119.65</b>	ATLANTA APP CON DEP <b>125.55</b>	ATLANTA TOWER 8L-26R 8R-26L 9L-27R 9R-27L 10-28 RWYS					ALL RWYS <b>121.9</b>	GND CON (8L-26R,8R-26L) (9L-27R,9R-27L) 10-28 RWYS	ALL RWYS <b>121.65 254.4</b>
-----------------------------	---	---	--	--	--	--	-----------------------------	---	------------------------------------

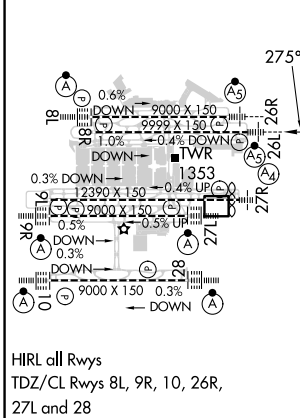


CLNC DEL	CPDLC
<b>118.1</b>	



ELEV 1026	<b>D</b>	TDZE 996
-----------	----------	----------

**RADAR REQUIRED**



1500	3500	TROYS	VGSI and RNAV glidepath not coincident (VGSI Angle 3.00°/TCH 63.)	
↑	↷	△	BOYKN	JIRRI
*LNAV only.		DEJAA	MARKD	JIRRI
*1.3 NM to RWY 26L		2600	4000	5000
RWY 26L		2600	4000	5000
1.3		3.6 NM	5.3 NM	3.5 NM
6.1 NM		GP 3.00° TCH 52		
CATEGORY	A	B	C	D
LPV DA		1281/24	285 (300-½)	
LNAV/VNAV DA		1360/35	364 (400-⅓)	
LNAV MDA	1460/24	464 (500-½)	1460/50	464 (500-1)