

WAAS CH <b>65700</b> <b>W27A</b>	APP CRS <b>275°</b>	Rwy Idg TDZE <b>999</b> Apt Elev <b>1026</b>
--	------------------------	--

# RNAV (GPS) RWY 27L

HARTSFIELD/JACKSON ATLANTA INTL (ATL)

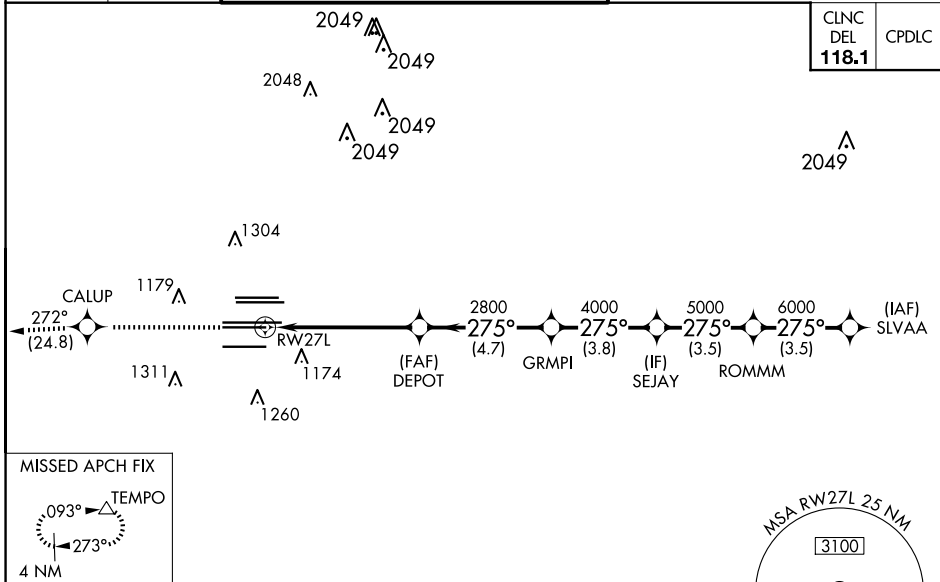
For uncompensated Baro-VNAV systems, LNAV/VNAV NA below -7°C (20°F) or above 54°C (130°F). DME/DME RNP-0.3 NA. Simultaneous approach authorized with Rwy 26R or 26L. LNAV procedure NA during simultaneous operations. Use of FD or AP providing RNAV track guidance required during simultaneous operations.

ALSF-2



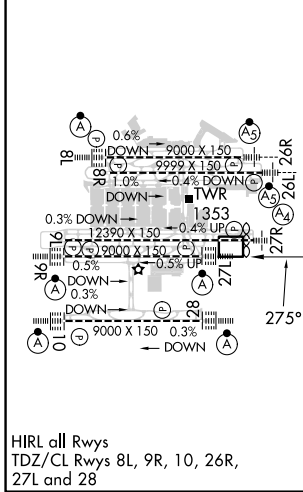
MISSED APPROACH: Climb to 4000 direct CALUP and on track 272° to TEMPO and hold.

D-ATIS ARR <b>119.65</b>	ATLANTA APP CON <b>127.9 379.9</b>	ATLANTA TOWER 8L-26R 8R-26L 9L-27R 9R-27L 10-28 RWYS <b>119.1 125.325 123.85 119.3 119.5 254.4</b>				ALL RWYS <b>121.9</b>	GND CON (8L-26R,8R-26L) (9L-27R,9R-27L) 10-28 RWYS <b>121.75 121.65 254.4</b>	ALL RWYS
-----------------------------	--	--	--	--	--	-----------------------------	---	-------------

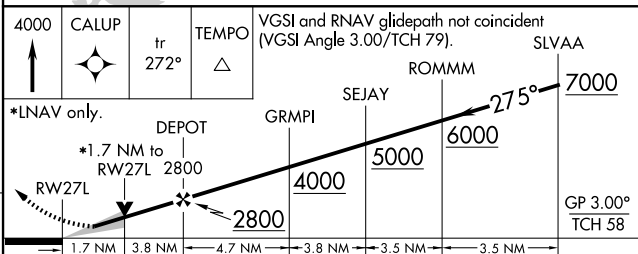


CLNC DEL	CPDLC
<b>118.1</b>	

ELEV <b>1026</b>	<b>D</b>	TDZE <b>999</b>
------------------	----------	-----------------



## RADAR REQUIRED



CATEGORY	A	B	C	D
LPV DA	1199/18		200 (200-½)	
LNAV/VNAV DA	1528-1¾		529 (600-1¾)	
LNAV MDA	1620/24	621 (600-½)		1620-1¾ 621 (600-1¾)

SE-4, 20 FEB 2025 to 20 MAR 2025

SE-4, 20 FEB 2025 to 20 MAR 2025