

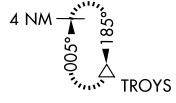
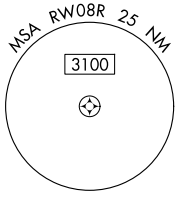
WAAS CH 48800 W08D	APP CRS 095°	Rwy Idg TDZE 1024 Apt Elev 1026	9999
--	------------------------	---	-------------

RNAV (GPS) RWY 8R

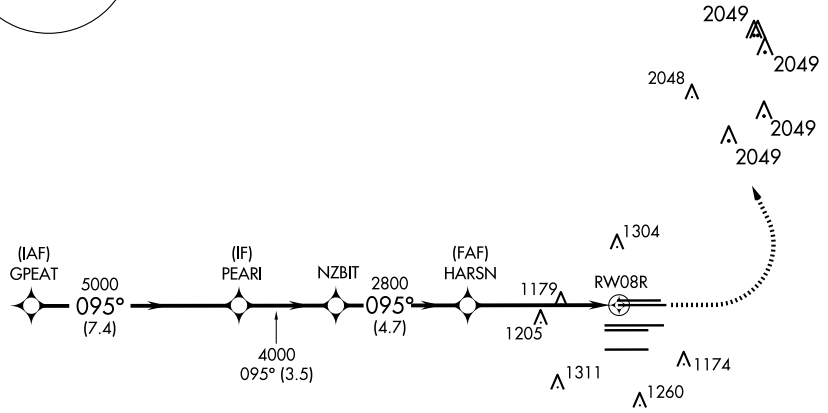
HARTSFIELD/JACKSON ATLANTA INTL (ATL)

RNP APCH - GPS. RADAR required.	MISSED APPROACH: Climb to 1500 then climbing left turn to 3500 direct TROYS and hold.
<p>▼ For uncompensated Baro-VNAV systems, LNAV/VNAV NA below -5°C or above 54°C. Simultaneous approach authorized with Rwy 9L or 9R or 10. LNAV procedure NA during simultaneous operations. Use of FD or AP providing RNAV track guidance required during simultaneous operations.</p>	

D-ATIS ARR 119.65 DEP 125.55	ATLANTA APP CON 127.9 379.9	ATLANTA TOWER 8L-26R 8R-26L 9L-27R 9R-27L 10-28 RWYS				ALL RWYS	GND CON 9L-27R, 9R-27L 10-28	ALL RWYS			
		119.1	125.325	123.85	119.3	119.5	254.4	121.9	121.75	121.65	254.4



CLNC DEL 118.1	CPDLC
-----------------------------	-------



SE-4, 20 FEB 2025 to 20 MAR 2025

SE-4, 20 FEB 2025 to 20 MAR 2025

ELEV 1026 D TDZE 1024	
VGSi and RNAV glidepath not coincident (VGSi Angle 3.00/TCH 67).	
GPEAT 5000 095° GP 3.00° TCH 53	PEARI 5000 NZBIT 4000 HARSN 2800 RW08R 1.2 NM to RW08R
CATEGORY A LPV DA LNAV/VNAV DA LNAV MDA	CATEGORY B 1282/40 1440/60 436 (500-1)
CATEGORY C 258 (300-¾) 416 (500-1¼) 1460-1¼	CATEGORY D 436 (500-1¼)
HIRL all Rwys TDZ/CL Rwys 8L, 9R, 10, 26R, 27L and 28	