
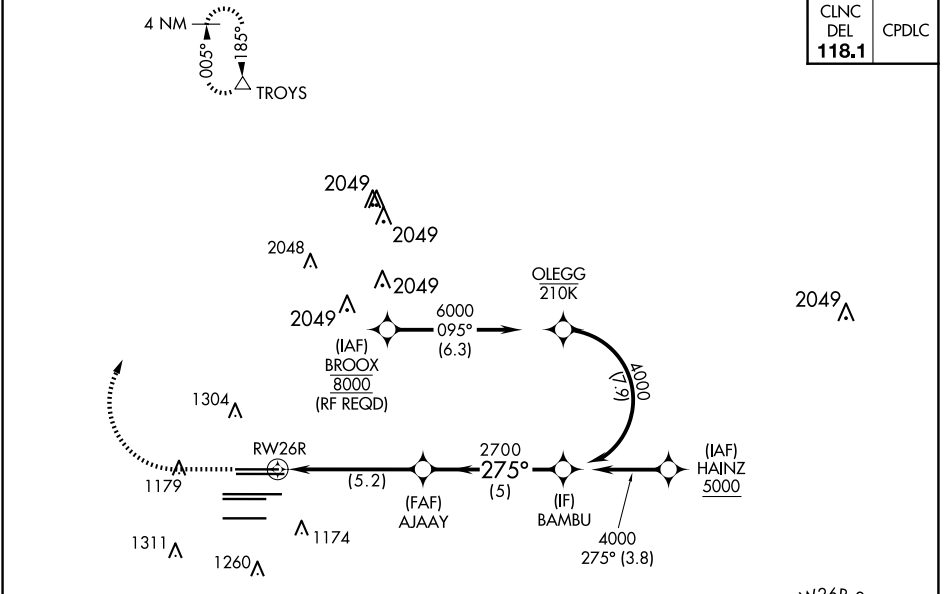


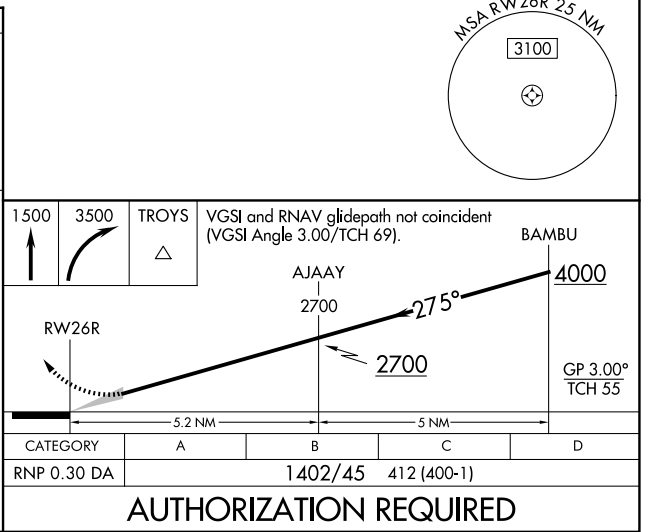
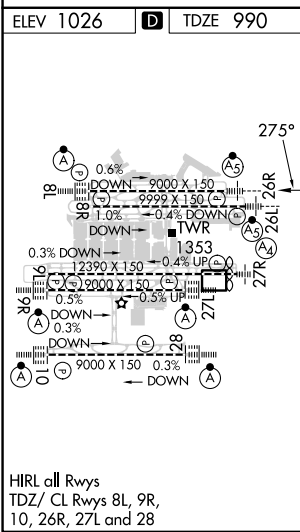
|             |          |             |
|-------------|----------|-------------|
| APP CRS     | Rwy ldg  | <b>8500</b> |
| <b>275°</b> | TDZE     | <b>990</b>  |
|             | Apt Elev | <b>1026</b> |

**RNAV (RNP) Z RWY 26R**  
 HARTSFIELD/JACKSON ATLANTA INTL (ATL)

|   |                    |               |                |               |              |  |              |  |               |               |
|---|--------------------|---------------|----------------|---------------|--------------|--|--------------|--|---------------|---------------|
| For uncompensated Baro-VNAV systems, procedure NA below -8°C (18°F) or above 54°C (130°F). GPS required. Simultaneous approach authorized. Arrival from BROOX NA during simultaneous triple approaches. |                    |               |                |               |              | MALSR<br> |              | MISSED APPROACH: Climb to 1500 then climbing right turn to 3500 direct TROYS and hold. |               |               |
| D-ATIS  | ATLANTA APP CON    | ATLANTA TOWER |                |               |              |  | ALL RWYS     | GND CON  |               | ALL RWYS      |
| ARR <b>119.65</b>   | <b>127.9 379.9</b> | 8L-26R        | 8R-26L         | 9L-27R        | 9R-27L       | 10-28  | <b>121.9</b> | <b>121.75</b>  | <b>121.65</b> | <b>254.4</b>  |
| DEP <b>125.55</b>   | <b>127.9 379.9</b> | <b>119.1</b>  | <b>125.325</b> | <b>123.85</b> | <b>119.3</b> | <b>119.5</b>   | <b>254.4</b> | <b>121.9</b>   | <b>121.75</b> | <b>121.65</b> |



|              |       |
|--------------|-------|
| CLNC DEL     | CPDLC |
| <b>118.1</b> |       |



**AUTHORIZATION REQUIRED**

SE-4, 20 FEB 2025 to 20 MAR 2025

SE-4, 20 FEB 2025 to 20 MAR 2025