

WAAS CH 61000 W26B	APP CRS 275°	Rwy Idg TDZE 990 Apt Elev 1026
--	------------------------	--

RNAV (GPS) Y RWY 26R

HARTSFIELD/JACKSON ATLANTA INTL (ATL)

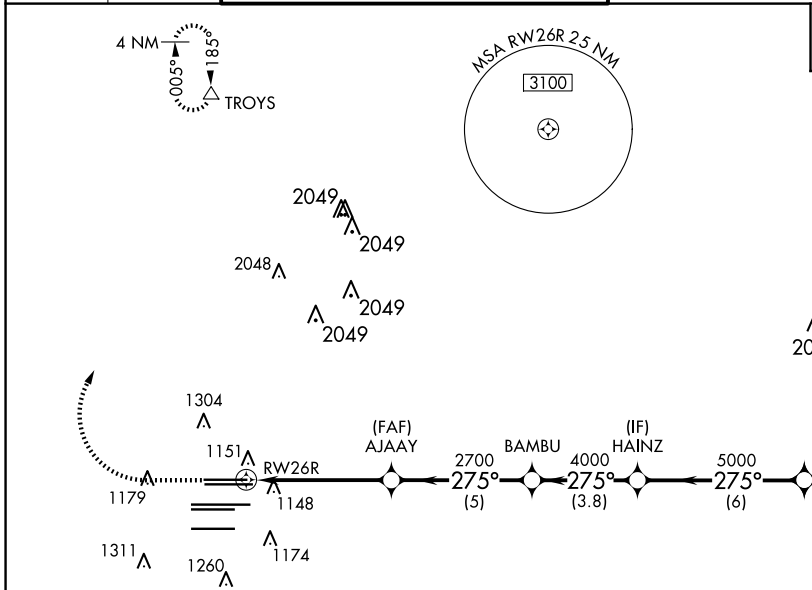
▽ For uncompensated Baro-VNAV systems, LNAV/VNAV NA below -7°C (20°F) or above 54°C (130°F). DME/DME RNP-0.3 NA. Simultaneous approach authorized with Rwy 27R or 27L or 28, or Rws 27R and 28. LNAV procedure NA during simultaneous operations. Use of FD or AP providing RNAV track guidance required during simultaneous operations.



MISSED APPROACH:
Climb to 1500 then climbing right turn to 3500 direct TROYS and hold.

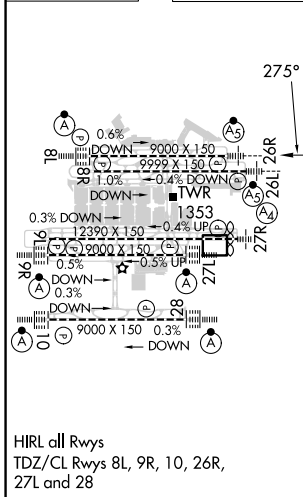
D-ATIS ARR 119.65	ATLANTA APP CON DEP 127.9 379.9	ATLANTA TOWER 8L-26R 8R-26L 9L-27R 9R-27L 10-28 RWYS				ALL RWYS	GND CON (8L-26R, 8R-26L) (9L-27R, 9R-27L) 10-28	ALL RWYS			
		119.1	125.325	123.85	119.3	119.5	254.4	121.9	121.75	121.65	254.4

CINC DEL	CPDLC
118.1	



ELEV 1026	D	TDZE 990
-----------	----------	----------

RADAR REQUIRED



1500	3500	TROYS	VGSi and RNAV glidepath not coincident (VGSi Angle 3.00/TCH 69).		HAINZ	ZELOW
*LNAV only.		AJAAY	BAMBU	5000	275°	5000
*1.3 NM to RWY 26R		2700	4000	5000		GP 3.00° TCH 55
RWY 26R		2700				
1.3		3.9 NM	5 NM	3.8 NM	6 NM	
CATEGORY	A	B	C	D		
LPV DA		1190/18	200 (200-½)			
LNAV/VNAV DA		1426/50	436 (500-1)			
LNAV MDA	1460/24	470 (500-½)	1460/50	470 (500-1)		

SE-4, 20 FEB 2025 to 20 MAR 2025

SE-4, 20 FEB 2025 to 20 MAR 2025