

WAAS CH 99300 W08B	APP CRS 095°	Rwy Idg TDZE 1015 Apt Elev 1026	8800
--	------------------------	---	-------------

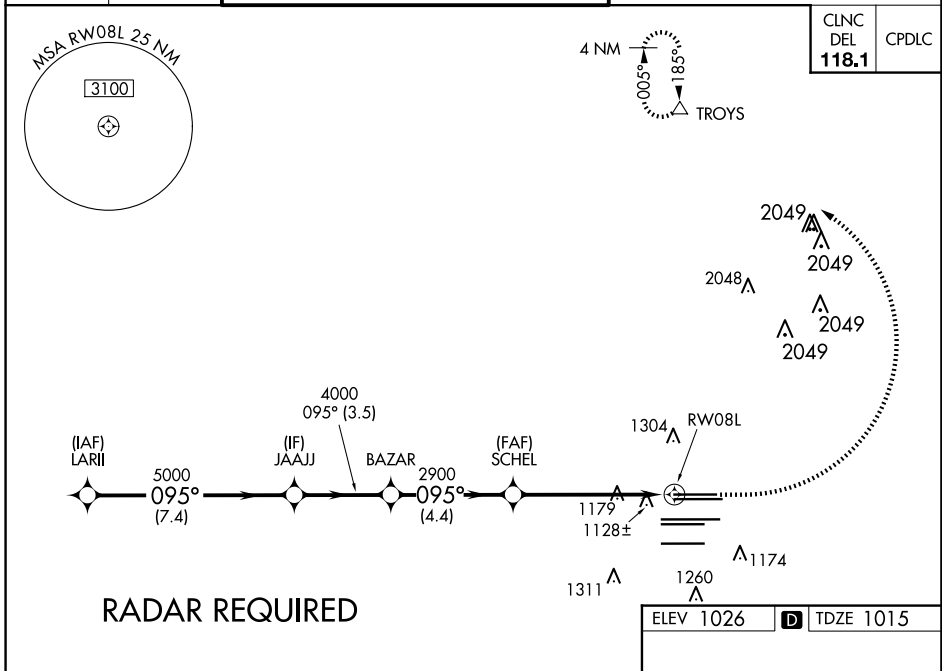
RNAV (GPS) Y RWY 8L

HARTSFIELD/JACKSON ATLANTA INTL (ATL)

▼ For uncompensated Baro-VNAV systems, LNAV/VNAV NA below -7°C (20°F) or above 54°C (130°F). DME/DME RNP-0.3 NA. For inop ALSF-2, increase LNAV/VNAV all Cats visibility to 1¼ miles. Helicopter visibility reduction below RVR 4000 NA. LNAV procedure NA during simultaneous operations. Simultaneous approach authorized with Rwy 9L or 9R or 10, or Rwy 8L and 10. Use of FD or AP providing RNAV track guidance required during simultaneous operations.

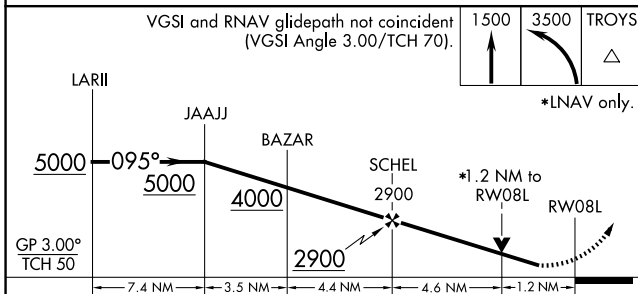
ALSF-2
MISSED APPROACH:
Climb to 1500 then
climbing left turn to
3500 direct TROYS
and hold.

D-ATIS ARR 119.65	ATLANTA APP CON	ATLANTA TOWER					ALL RWYS	GND CON	ALL RWYS
DEP 125.55	127.9 379.9	119.1	125.325	123.85	119.3	119.5	254.4	121.9	121.75 121.65 254.4

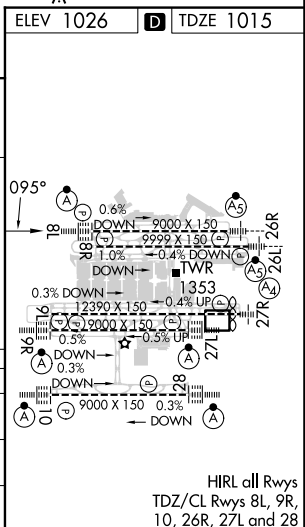


RADAR REQUIRED

VGSI and RNAV glidepath not coincident (VGSI Angle 3.00/TCH 70).



CATEGORY	A	B	C	D
LPV DA		1215/18	200 (200-½)	
LNAV/VNAV DA		1404/45	389 (400-¾)	
LNAV MDA	1460/24	445 (500-½)	1460/45	445 (500-¾)



SE-4, 20 FEB 2025 to 20 MAR 2025

SE-4, 20 FEB 2025 to 20 MAR 2025