

SMKEY TWO DEPARTURE (RNAV)

**TOP ALTITUDE:
10000**

D-ATIS 125.55
CLNC DEL 118.1
CPDLC
GND CON

121.9 254.4 (Rwys 8L-26R, 8R-26L)
121.75 254.4 (Rwys 9L-27R, 9R-27L)
121.65 254.4 (Rwy 10-28)

ATLANTA TOWER

119.1 254.4 (Rwy 8L-26R)
125.325 254.4 (Rwy 8R-26L)
119.3 254.4 (Rwy 9R-27L)
123.85 254.4 (Rwy 9L-27R)
119.5 254.4 (Rwy 10-28)

ATLANTA DEP CON

133.475 281.425 (Rwys 8L-26R, 8R-26L)
125.65 281.425 (Rwys 9L-27R, 9R-27L)
121.225 281.425 (Rwy 10-28)

NOTE: If unable to accept climb rate, advise Clearance Delivery on initial contact.

NOTE: Use departure frequency depicted unless otherwise advised.

NOTE: For Turbojet aircraft only.

NOTE: DME/DME/IRU or GPS Required.

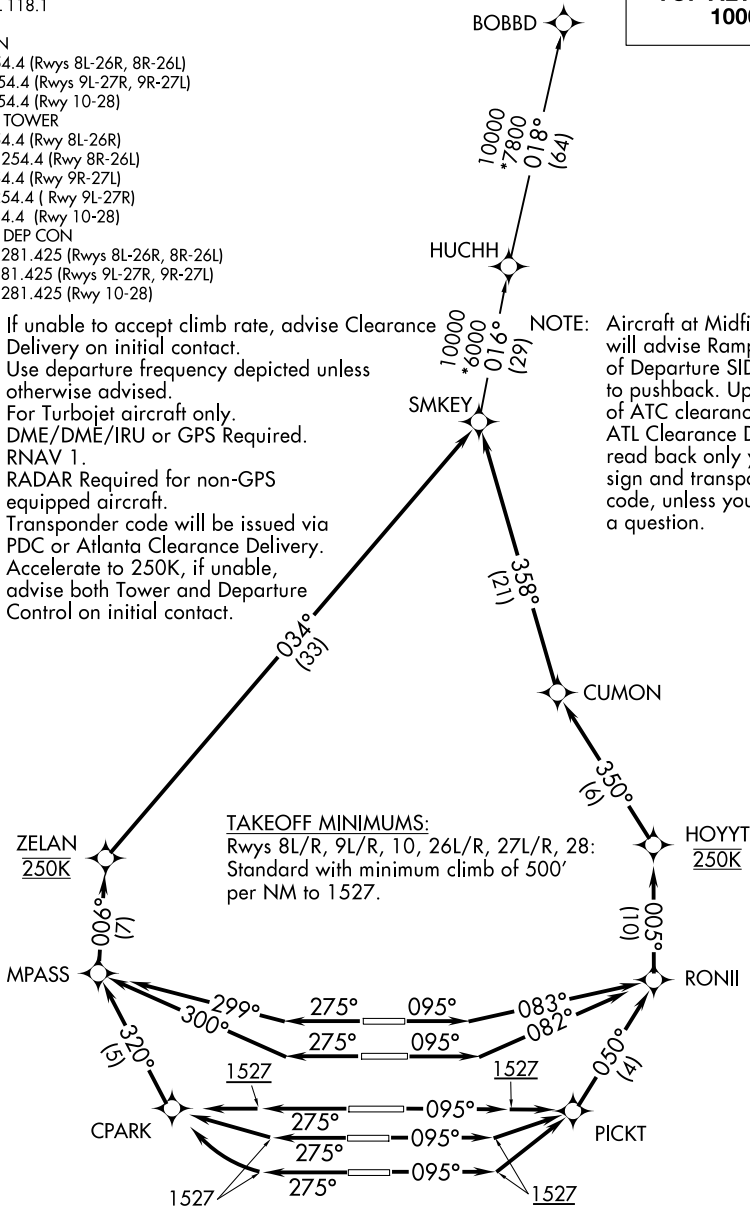
NOTE: RNAV 1.

NOTE: RADAR Required for non-GPS equipped aircraft.

NOTE: Transponder code will be issued via PDC or Atlanta Clearance Delivery.

NOTE: Accelerate to 250K, if unable, advise both Tower and Departure Control on initial contact.

NOTE: Aircraft at Midfield Ramps will advise Ramp Towers of Departure SID prior to pushback. Upon receipt of ATC clearance (from ATL Clearance Delivery), read back only your call sign and transponder code, unless you have a question.



(CONTINUED ON FOLLOWING PAGE)

NOTE: Chart not to scale.

SMKEY TWO DEPARTURE (RNAV)

(SMKEY2.SMKEY) 10NOV16

SE-4, 20 FEB 2025 to 20 MAR 2025

SE-4, 20 FEB 2025 to 20 MAR 2025



DEPARTURE ROUTE DESCRIPTION
SEE ADDITIONAL REQUIREMENTS ON AAUP

TAKEOFF RWY 8L: Climb heading 095° to intercept course 083° to RONII, then on depicted route to SMKEY, maintain 250K to HOYYT, thence. . . .

TAKEOFF RWY 8R: Climb heading 095° to intercept course 082° to RONII, then on depicted route to SMKEY, maintain 250K to HOYYT, thence. . . .

TAKEOFF RWYS 9L/R, 10: Climb heading 095° to 1527, then direct PICKT, then on depicted route to SMKEY, maintain 250K to HOYYT, thence. . . .

TAKEOFF RWY 26L: Climb heading 275° to intercept course 300° to MPASS, then on depicted route to SMKEY, maintain 250K to ZELAN, thence. . . .

TAKEOFF RWY 26R: Climb heading 275° to intercept course 299° to MPASS, then on depicted route to SMKEY, maintain 250K to ZELAN, thence. . . .

TAKEOFF RWYS 27L/R: Climb heading 275° to 1527, then direct CPARK, then on depicted route to SMKEY, maintain 250K to ZELAN, thence. . . .

TAKEOFF RWY 28: Climb heading 275° to 1527, then right turn direct CPARK, then on depicted route to SMKEY, maintain 250K to ZELAN, thence. . . .

. . . .maintain 10000. Expect clearance to filed altitude ten minutes after departure.

BOBBD TRANSITION (SMKEY2.BOBBD)

SE-4, 20 FEB 2025 to 20 MAR 2025

SE-4, 20 FEB 2025 to 20 MAR 2025