

(VRSTY3.VRSTY) 24305

VRSTY THREE DEPARTURE (RNAV)

HARTSFIELD/JACKSON ATLANTA INTL(ATL)

AL-26 (FAA)

ATLANTA, GEORGIA

RNAV 1 - DME/DME/IRU or GPS.
RADAR required for non-GPS equipped aircraft.

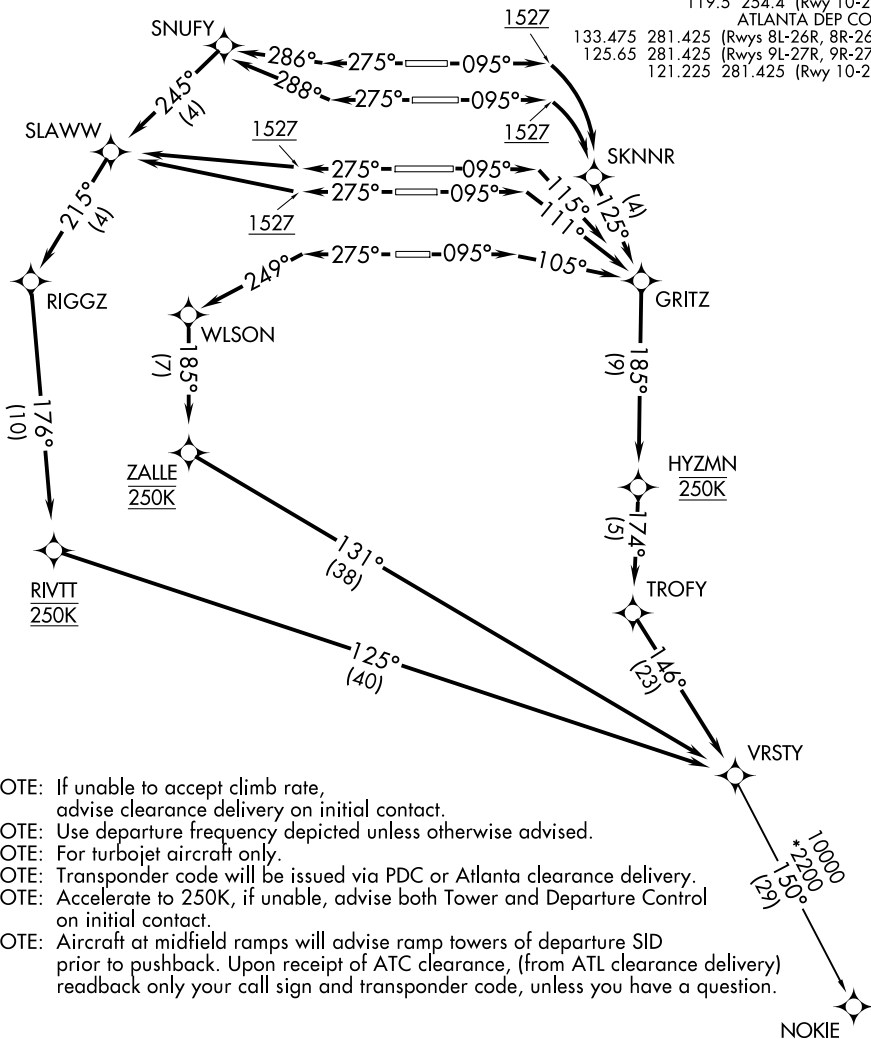
TOP ALTITUDE: 10000

D-ATIS 125.55
CLNC DEL 118.1
CPDLC
GND CON

TAKEOFF MINIMUMS

Rwys 8L/R, 9L/R, 10, 26L/R, 27L/R, 28: Standard with minimum climb of 500' per NM to 1527.

121.9 254.4 (Rwys 8L-26R, 8R-26L)
121.75 254.4 (Rwys 9L-27R, 9R-27L)
121.65 254.4 (Rwy 10-28)
ATLANTA TOWER
119.1 254.4 (Rwy 8L-26R)
125.325 254.4 (Rwy 8R-26L)
119.3 254.4 (Rwy 9R-27L)
123.85 254.4 (Rwy 9L-27R)
119.5 254.4 (Rwy 10-28)
ATLANTA DEP CON
133.475 281.425 (Rwys 8L-26R, 8R-26L)
125.65 281.425 (Rwys 9L-27R, 9R-27L)
121.225 281.425 (Rwy 10-28)



- NOTE: If unable to accept climb rate, advise clearance delivery on initial contact.
- NOTE: Use departure frequency depicted unless otherwise advised.
- NOTE: For turbojet aircraft only.
- NOTE: Transponder code will be issued via PDC or Atlanta clearance delivery.
- NOTE: Accelerate to 250K, if unable, advise both Tower and Departure Control on initial contact.
- NOTE: Aircraft at midfield ramps will advise ramp towers of departure SID prior to pushback. Upon receipt of ATC clearance, (from ATL clearance delivery) readback only your call sign and transponder code, unless you have a question.

NOTE: Chart not to scale.

(CONTINUED ON FOLLOWING PAGE)

VRSTY THREE DEPARTURE (RNAV)

(VRSTY3.VRSTY) 19MAY22

ATLANTA, GEORGIA

HARTSFIELD/JACKSON ATLANTA INTL(ATL)

SE-4, 20 FEB 2025 to 20 MAR 2025

SE-4, 20 FEB 2025 to 20 MAR 2025



DEPARTURE ROUTE DESCRIPTION
SEE ADDITIONAL REQUIREMENTS ON AAUP

TAKEOFF RUNWAYS 8L/R: Climb on heading 095° to 1527, then right turn direct SKNNR, then on track 125° to GRITZ, then on track 185° to HYZMN, then on track 174° to TROFY, then on track 146° to VRSTY, maintain 250K to HYZMN, thence

TAKEOFF RUNWAY 9L: Climb on heading 095° to intercept course 115° to GRITZ, then on track 185° to HYZMN, then on track 174° to TROFY, then on track 146° to VRSTY, maintain 250K to HYZMN, thence

TAKEOFF RUNWAY 9R: Climb on heading 095° to intercept course 111° to GRITZ, then on track 185° to HYZMN, then on track 174° to TROFY, then on track 146° to VRSTY, maintain 250K to HYZMN, thence

TAKEOFF RUNWAY 10: Climb on heading 095° to intercept course 105° to GRITZ, then on track 185° to HYZMN, then on track 174° to TROFY, then on track 146° to VRSTY, maintain 250K to HYZMN, thence

TAKEOFF RUNWAY 26L: Climb on heading 275° to intercept course 288° to SNUFY, then on track 245° to SLAWW, then on track 215° to RIGGZ, then on track 176° to RIVTT, then on track 125° to VRSTY, maintain 250K to RIVTT, thence

TAKEOFF RUNWAY 26R: Climb on heading 275° to intercept course 286° to SNUFY, then on track 245° to SLAWW, then on track 215° to RIGGZ, then on track 176° to RIVTT, then on track 125° to VRSTY, maintain 250K to RIVTT, thence

TAKEOFF RUNWAYS 27L/R: Climb on heading 275° to 1527, then direct SLAWW, then on track 215° to RIGGZ, then on track 176° to RIVTT, then on track 125° to VRSTY, maintain 250K to RIVTT, thence

TAKEOFF RUNWAY 28: Climb on heading 275° to intercept course 249° to WLSON, then on track 185° to ZALLE, then on track 131° to VRSTY, maintain 250K to ZALLE, thence

. . . . (transition). Maintain 10000, expect clearance to filed altitude 10 minutes after departure.

NOKIE TRANSITION (VRSTY3.NOKIE)

SE-4, 20 FEB 2025 to 20 MAR 2025

SE-4, 20 FEB 2025 to 20 MAR 2025