

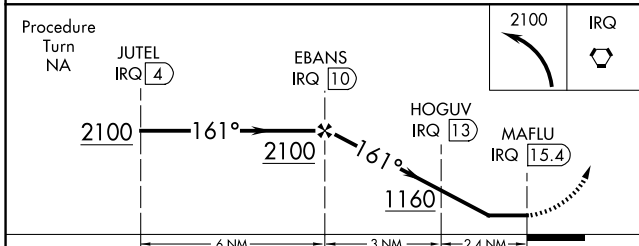
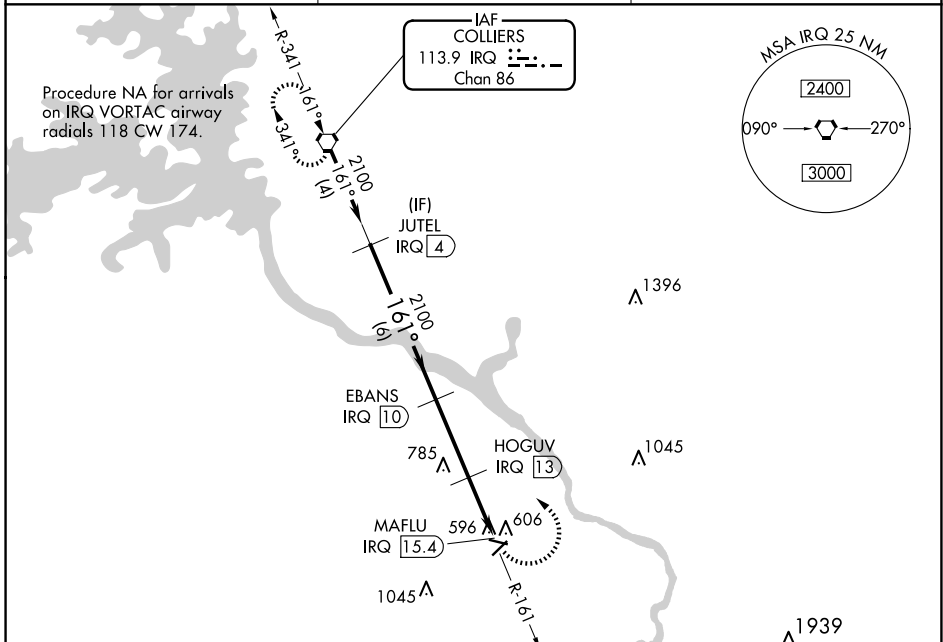
| | | | |
|--|------------------------|-----------------------------|--|
| VORTAC IRQ 113.9 Chan 86 | APP CRS 161° | Rwy Idg TDZE Apt Elev | N/A N/A 422 |
|--|------------------------|-----------------------------|--|

VOR/DME-B
DANIEL FLD (DNL)

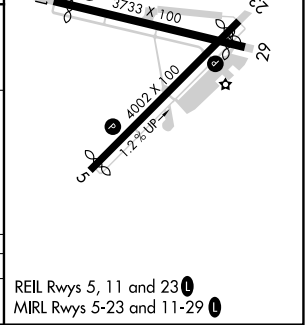
⚠ When local altimeter setting not received, use Augusta Rgnl at Bush Fld altimeter setting and increase all MDA 60 feet.
⚠ Procedure NA at night. Helicopter visibility reduction below 1 SM NA.

MISSED APPROACH: Climbing left turn to 2100 direct IRQ VORTAC and hold.

| | | |
|------------------------|---|---|
| ASOS 135.275 | AUGUSTA APP CON ★ 126.8 270.3 | UNICOM 123.05 (CTAF) 0 |
|------------------------|---|---|



| CATEGORY | A | B | C | D |
|-------------------|-------|-------------|--------|--------------|
| C CIRCLING | 920-1 | 498 (500-1) | 1400-3 | 978 (1000-3) |



SE-4, 20 FEB 2025 to 20 MAR 2025

SE-4, 20 FEB 2025 to 20 MAR 2025