

VOR/DME AUG 114.95 Chan 96(Y)	APP CRS 354°	Rwy Idg 5002 TDZE 350 Apt Elev 352
---	------------------------	---

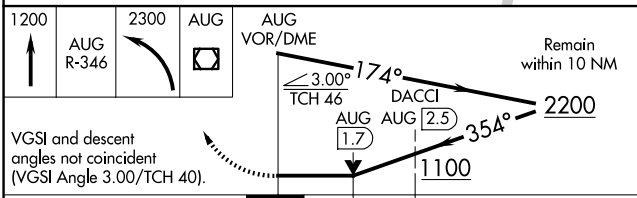
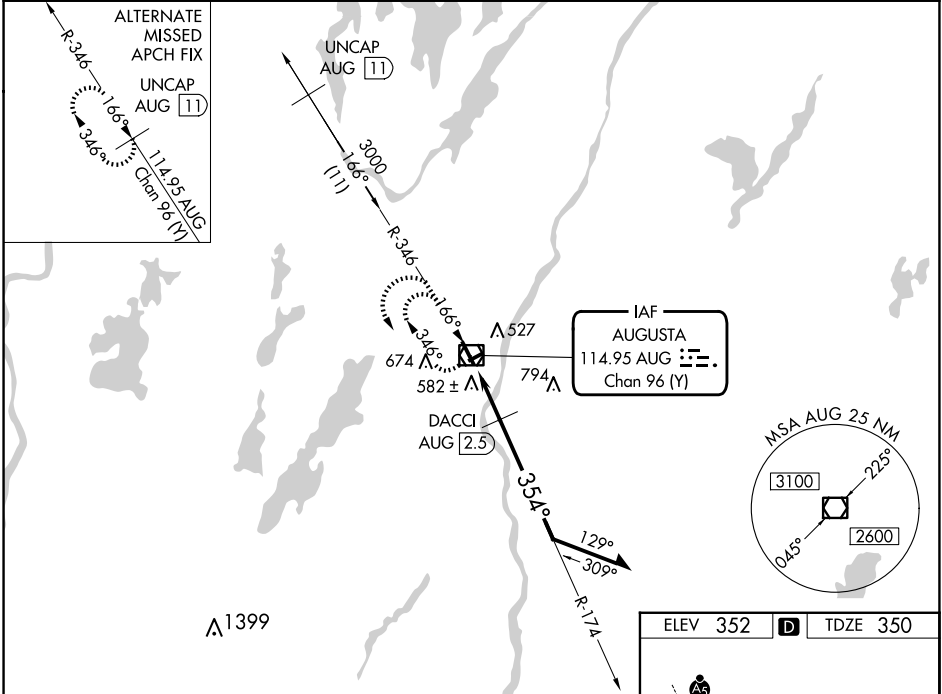
VOR RWY 35

AUGUSTA STATE (AUG)

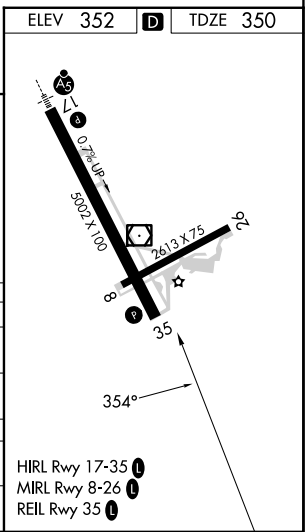
⚠ Rwy 35 helicopter visibility reduction below $\frac{3}{4}$ SM NA. When local altimeter setting not received, use Waterville altimeter setting: increase all MDA 40 feet and visibility S-35 Cats C and D $\frac{1}{2}$ SM, and Circling Cat D $\frac{1}{4}$ SM; DACCI fix minimums increase visibility S-35 Cats C and D $\frac{1}{8}$ SM, and Circling Cat D $\frac{1}{4}$ SM. Circling Rwy 8, 26 NA at night.

MISSED APPROACH: Climb to 1200 on AUG VOR/DME R-346, then climbing left turn to 2300 direct AUG VOR/DME and hold.

ASOS 118.325	PORTLAND APP CON * 128.35 299.2	CLNC DEL 119.95 299.2	UNICOM 123.0 (CTAF) 0
------------------------	---	---------------------------------	---------------------------------



CATEGORY	A	B	C	D
S-35	1100-1 750 (800-1)	1100-1 $\frac{1}{4}$ 750 (800-1 $\frac{1}{4}$)	1100-2	750 (800-2)
C CIRCLING	1100-1 748 (800-1)	1100-1 $\frac{1}{4}$ 748 (800-1 $\frac{1}{4}$)	1100-2 $\frac{1}{4}$ 748 (800-2 $\frac{1}{4}$)	1160-2 $\frac{1}{2}$ 808 (900-2 $\frac{1}{2}$)
DACCI FIX MINIMUMS				
S-35	840-1	490 (500-1)	840-1 $\frac{3}{8}$	490 (500-1 $\frac{3}{8}$)
C CIRCLING	960-1 608 (700-1)	980-1 628 (700-1)	980-1 $\frac{3}{4}$ 628 (700-1 $\frac{3}{4}$)	1160-2 $\frac{1}{2}$ 808 (900-2 $\frac{1}{2}$)



- HIRL Rwy 17-35 **1**
- MIRL Rwy 8-26 **1**
- REIL Rwy 35 **1**

NE-1, 20 FEB 2025 to 20 MAR 2025

NE-1, 20 FEB 2025 to 20 MAR 2025