

APP CRS Rwy Idg **3844**  
**095°** TDZE **154**  
 Apt Elev **160**

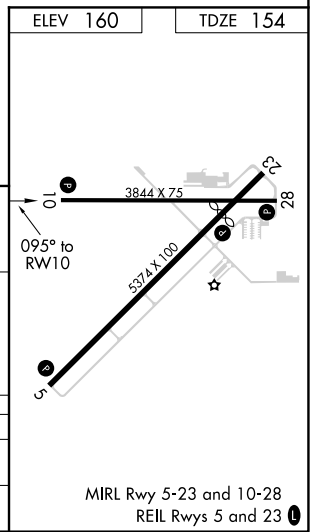
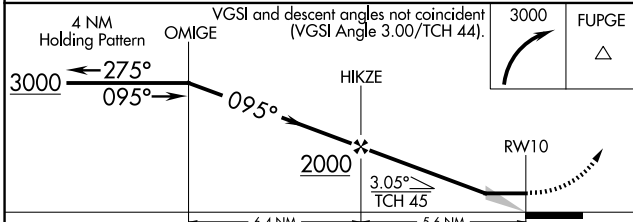
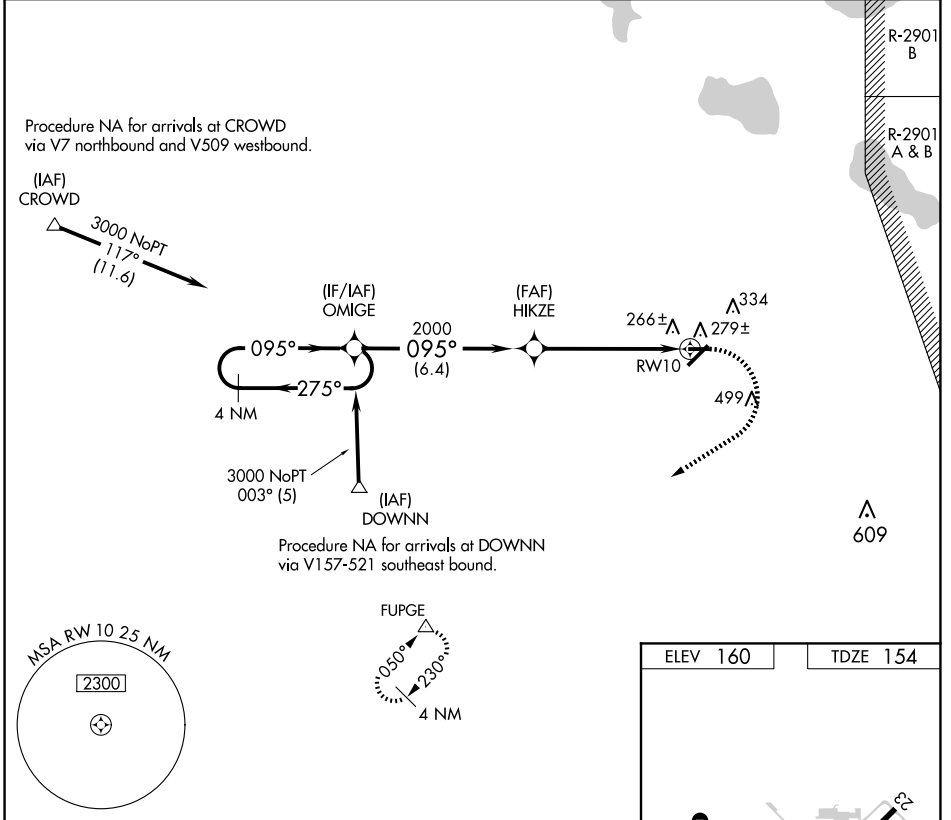
# RNAV (GPS) RWY 10

AVON PARK EXEC (AVO)

**⚠** DME/DME RNP-0.3 NA. Rwy 5,10,23,28 helicopter visibility reduction below  
**NA** 1 SM NA. When local altimeter setting not received, use Orlando Intl altimeter setting; increase all MDA 140 feet. Procedure NA at night.

MISSED APPROACH: Climbing right turn 3000 direct FUPGE and hold.

AWOS-3 **118.725** MIAMI CENTER ★ **134.55 257.7** UNICOM **122.8 (CTAF) 0**



| CATEGORY          | A                    | B                    | C | D  |
|-------------------|----------------------|----------------------|---|----|
| LNAV MDA          | 640-1                | 486 (500-1)          |   | NA |
| <b>C</b> CIRCLING | 680-1<br>520 (600-1) | 840-1<br>680 (700-1) |   | NA |

SE-3, 20 FEB 2025 to 20 MAR 2025

SE-3, 20 FEB 2025 to 20 MAR 2025