

VORTAC CEC	APP CRS	Rwy Idg	5002
109.0	131°	TDZE	60
Chan 27		Apt Elev	61

VOR/DME RWY 12

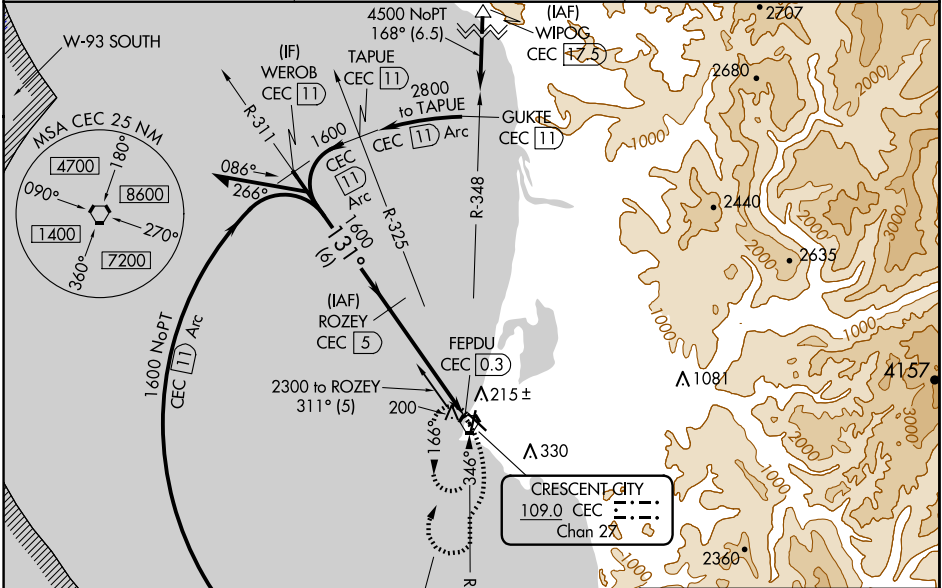
JACK MC NAMARA FLD (CEC)

▽ VDP NA with Brookings altimeter setting. When local altimeter setting not received, use Brookings altimeter setting and increase all MDA 100 feet; increase S-12 Cat C/D, and Circling Cat D visibility ¼ mile, and Circling Cat C visibility ½ mile. For inop MALSRS, increase S-12 Cats A/B visibility to 1 mile, Cats C/D visibility to 1½ mile. For inop MALSRS when using Brookings altimeter setting, increase S-12 Cats A/B visibility to 1 mile, Cats C/D visibility to 1½ mile. Night Landing: Rwy 18, 30 NA. Night Landing: Rwy 36 operational VGSJ required, remain on or above VGSJ glidepath until threshold.

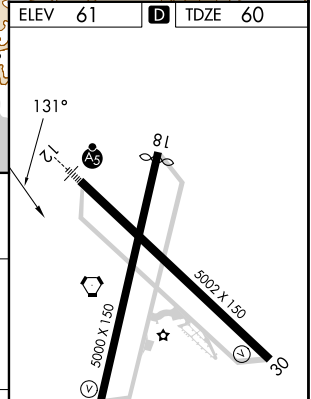
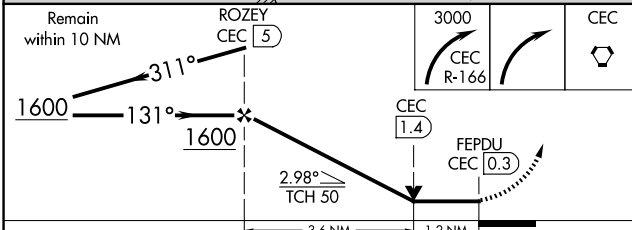
MALSRS

MISSED APPROACH:
Climbing right turn to 3000 on CEC VORTAC R-166 then right turn direct CEC VORTAC and hold.

ASOS 119.925	SEATTLE CENTER 124.85 306.3	UNICOM 122.8 (CTAF) 0
------------------------	---------------------------------------	---------------------------------



ELEV 61	D TDZE 60
---------	------------------



CATEGORY	A	B	C	D
S-12	480-¾ 420 (500-¾)		480-1 420 (500-1)	
C CIRCLING	540-1 479 (500-1)		640-1½ 579 (600-1½)	640-2 579 (600-2)

HIRL Rwy 12-30 **0**
REIL Rws 18, 30 and 36 **0**
MIRL Rwy 18-36 **0**

SW-2, 20 FEB 2025 to 20 MAR 2025

SW-2, 20 FEB 2025 to 20 MAR 2025