

RNAV (GPS) RWY 12R

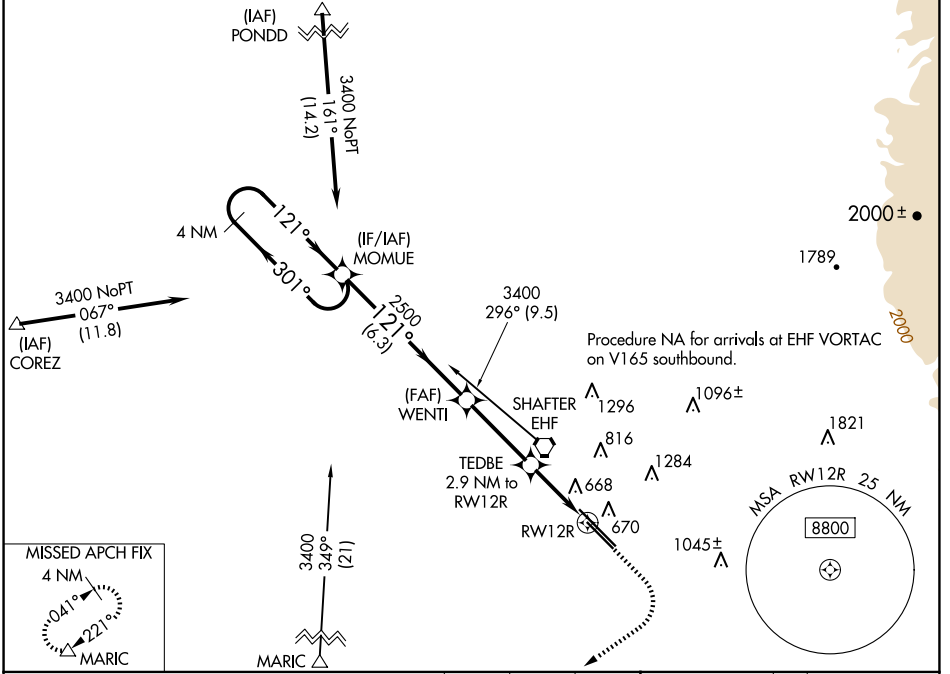
MEADOWS FLD (BFL)

WAAS CH 61040 W12B	APP CRS 121°	Rwy Idg TDZE 488 Apt Elev 510	7700 488 510
--	------------------------	---	---

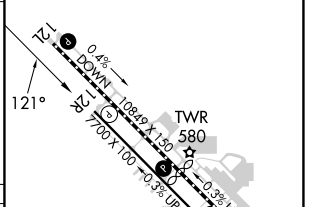
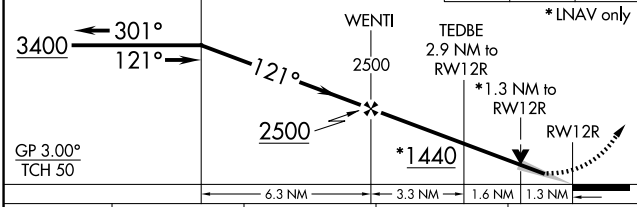
▽ For uncompensated Baro-VNAV systems, LNAV/VNAV NA below -1°C (31°F) or above 54°C (130°F). Circling NA northeast of Rwy 12L-30R. DME/DME RNP-0.3 NA.

MISSED APPROACH: Climb to 1000 then climbing right turn to 3500 direct MARIC and hold.

ATIS 118.6	BAKERSFIELD APP CON ★ 118.8 284.625 118.9 270.3 (SOUTH) (NORTH)	BAKERSFIELD TOWER ★ 118.1 (CTAF) 0 257.8	GND CON 121.7	UNICOM 122.95
----------------------	--	--	-------------------------	-------------------------



VGSI and RNAV glidepath not coincident (VGSI Angle 3.00/TCH 25).		1000	3500	MARIC	ELEV 510	D	TDZE 488
--	--	------	------	-------	----------	----------	----------



CATEGORY	A	B	C	D
LPV DA	738- ³ / ₈		250 (300- ³ / ₄)	
LNAV/VNAV DA	969-1 ⁵ / ₈		481 (500-1 ¹ / ₂)	
LNAV MDA	920-1	432 (500-1)	920-1 ¹ / ₄	432 (500-1 ¹ / ₄)
C CIRCLING	960-1	450 (500-1)	960-1 ¹ / ₂	1060-2 450 (500-1 ¹ / ₂)

TDZ/CL Rwy 30R
HIRL Rwy 12L-30R **L**
MIRL Rwy 12R-30L **L**
REIL Rws 12R and 30L

SW-3, 20 FEB 2025 to 20 MAR 2025

SW-3, 20 FEB 2025 to 20 MAR 2025