

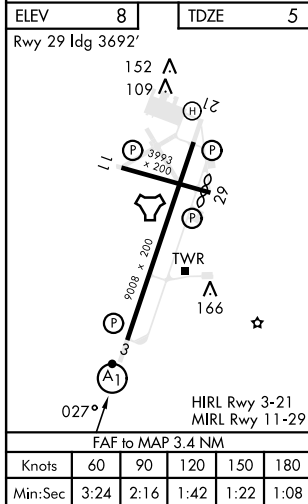
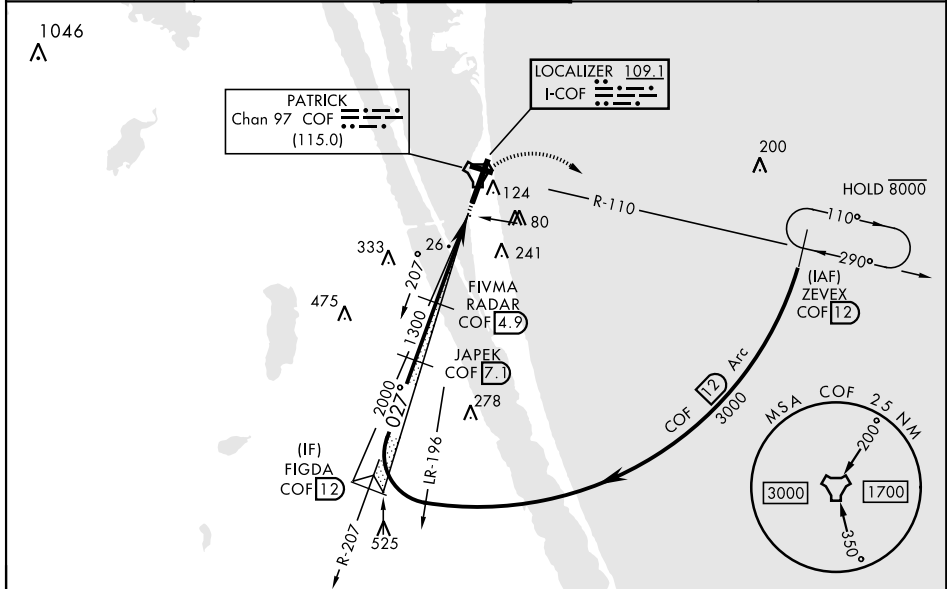
COCOA BEACH, FLORIDA

ILS or LOC RWY 3

LOC I-COF 109.1	APCH CRS 027°	Rwy Idg TDZE Arpt Elev 9008 5 8	[USAF]	PATRICK SFB (KCOF)
---------------------------	-------------------------	---------------------------------------------------------------------	--------	--------------------

DME required	ALSF-1 	MISSED APPROACH: Climb to 600, then climbing right turn to 3000 and intercept COF TACAN R-110 direct ZEVEX/COF 12 DME and hold.
<p>▼ * When ALS inop, increase RVR to 40 and vis to 3/4 mile.</p> <p>** When ALS inop, increase CAT AB RVR to 55, vis to 1 mile; CAT CD vis to 1 3/8 miles.</p> <p>*** Circling not authorized NW of Rwy 3-21. When Rwy 29 VGSI inop, circling to Rwy 29 NA at night. When circling to Rwy 29 at night, operational VGSI required, remain on or above VGSI glidepath until threshold.</p>		

ATIS ★ 119.175 273.5	ORLANDO APP CON★ 132.65 281.425	TOWER ★ 133.75 269.375	GND CON ★ 124.35 335.8	CLNC DEL ★ 118.4 289.4
--------------------------------	-------------------------------------------	----------------------------------	----------------------------------	----------------------------------



ELEV 8	TDZE 5	RWY 29 Ildg 3692'			
EMERG SAFE ALT 100 NM 3000					
CATEGORY		A	B	C	D
S-ILS 3 *		205/24		200	(200-1/2)
S-LOC 3 **		460/24	455 (500-1/2)	460/45	455 (500-7/8)
*** CIRCLING		520-1	512 (600-1)	540-1 1/2	552 (600-2)

COCOA BEACH, FLORIDA
Amdt 3 02NOV23

28° 14' N-80° 37' W

PATRICK SFB (KCOF)

ILS or LOC RWY 3

SE-3, 20 FEB 2025 to 20 MAR 2025

SE-3, 20 FEB 2025 to 20 MAR 2025