

BANGOR, MAINE

# HI-ILS Z or LOC Z RWY 15

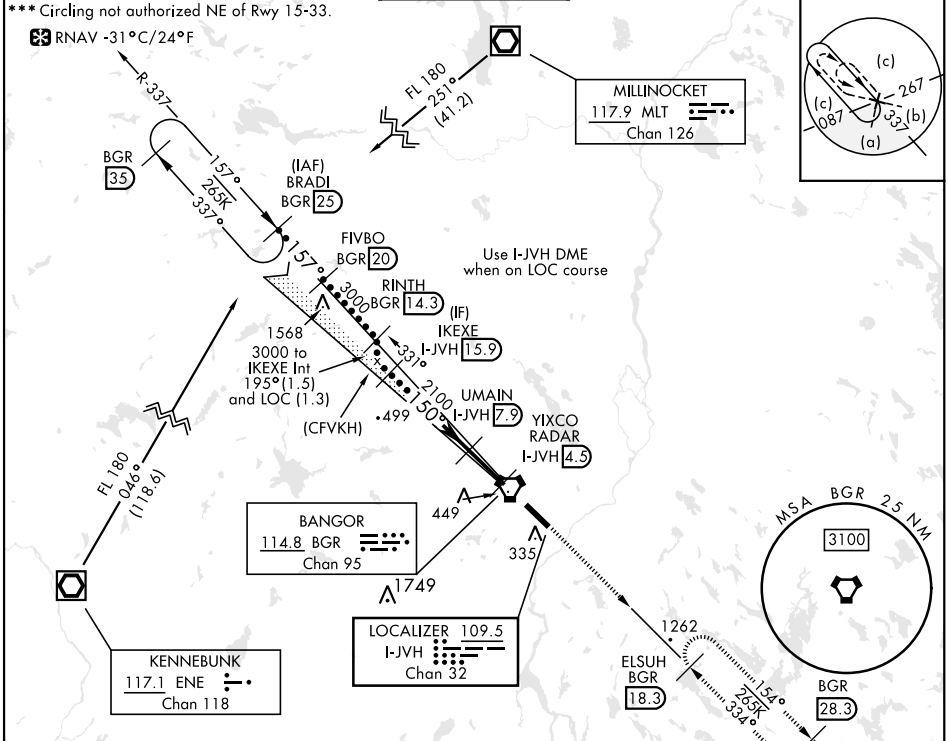
LOC/DME I-JVH <b>109.5</b> Chan <b>32</b>	APCH CRS <b>150°</b>	Rwy ldg <b>11,440</b> TDZE <b>192</b> Arpt Elev <b>192</b>
---	-------------------------	--

AL-39 [USAF]

BANGOR INTL (KBGR)

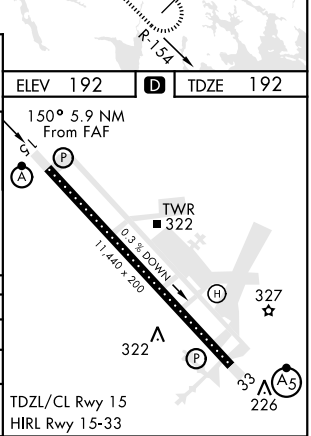
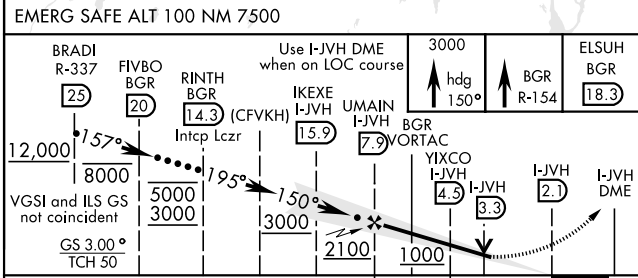
DME required.	ALSF-2	MISSED APPROACH: Climb to 3000 via heading 150° and BGR VORTAC R-154 to ELSUH (R-154/18.3 DME) and hold.
<p>▼ * When ALS inop, increase CAT E RVR to 40. ** When ALS inop, increase CAT CDE vis to 1 1/2 miles.</p>		

ATIS <b>127.75</b>	APP CON <b>118.925 239.3</b>	TOWER <b>120.7 233.7</b>	GND CON <b>121.9 348.6</b>	ASR
-----------------------	---------------------------------	-----------------------------	-------------------------------	-----



NE-1, 20 FEB 2025 to 20 MAR 2025

NE-1, 20 FEB 2025 to 20 MAR 2025



CATEGORY	C	D	E
S-ILS 15*	392/18	200	(200-1/2)
S-LOC 15**	660/50	468	(500-1)
CIRCLING***	740-1 1/2 548 (600-1 1/2)	820-2 628 (700-2)	880-2 1/2 688 (700-2 1/2)

BANGOR, MAINE

44°48'N-68°50'W

BANGOR INTL (KBGR)

Amrd 2 02DEC21

# HI-ILS Z or LOC Z RWY 15