

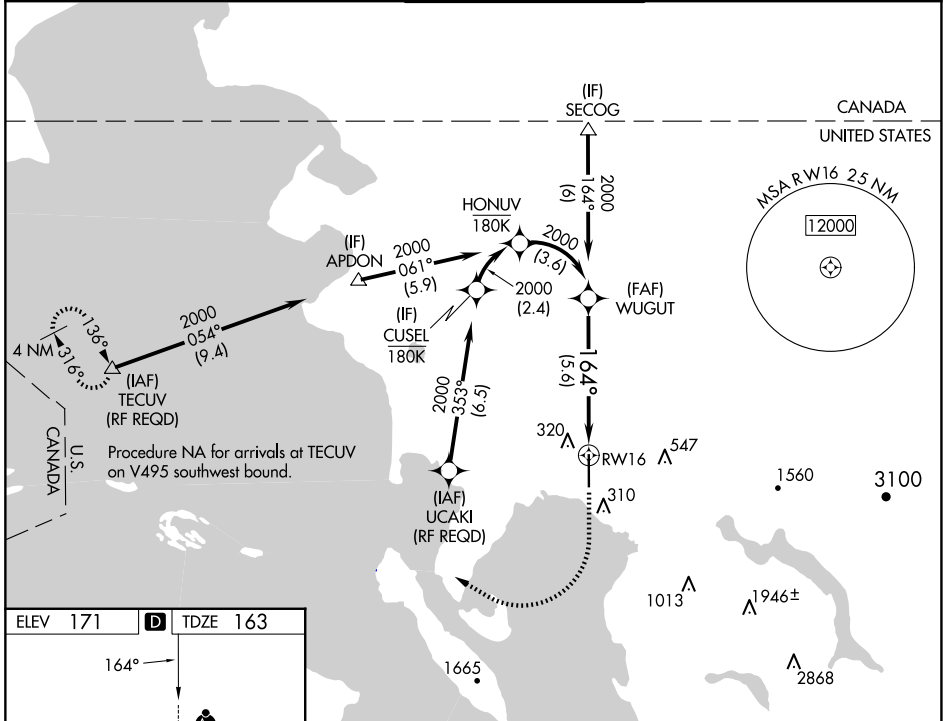
APP CRS	Rwy Idg	6700
164°	TDZE	163
	Apt Elev	171

RNAV (RNP) Z RWY 16

BELLINGHAM INTL (BLI)

RNP AR APCH	MALSR	MISSED APPROACH: Climb to 700 then climbing right turn to 2000 direct TECUV and hold.
<p>▼ For uncompensated Baro-VNAV systems, procedure NA below -10°C or above 54°C. For inop ALS, increase RNP 0.27 all Cats visibility to RVR 4500, increase RNP 0.30 all Cats visibility to RVR 6000.</p>		

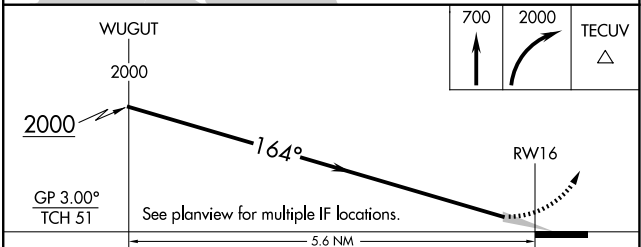
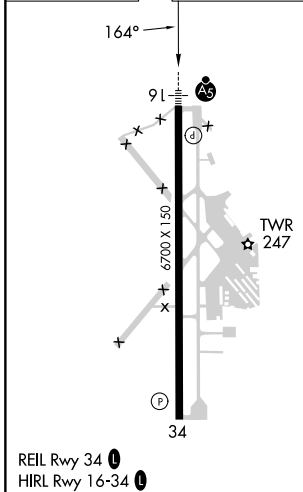
ATIS 134.45	VICTORIA TERMINAL APP CON 132.7 290.8	BELLINGHAM TOWER* 124.9 (CTAF) 0 379.3	GND CON 127.4 379.3	UNICOM 122.95
-----------------------	---	--	-------------------------------	-------------------------



NW-1, 20 FEB 2025 to 20 MAR 2025

NW-1, 20 FEB 2025 to 20 MAR 2025

ELEV 171	D	TDZE 163
----------	----------	----------



CATEGORY	A	B	C	D
RNP 0.27 DA		483/24	320 (400-½)	
RNP 0.30 DA		580/45	417 (500-¾)	

AUTHORIZATION REQUIRED