

# HI-VOR or TACAN RWY 28R

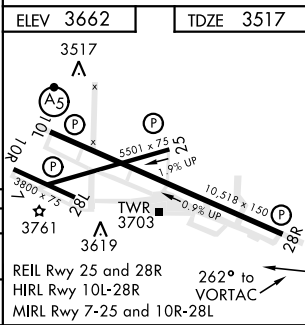
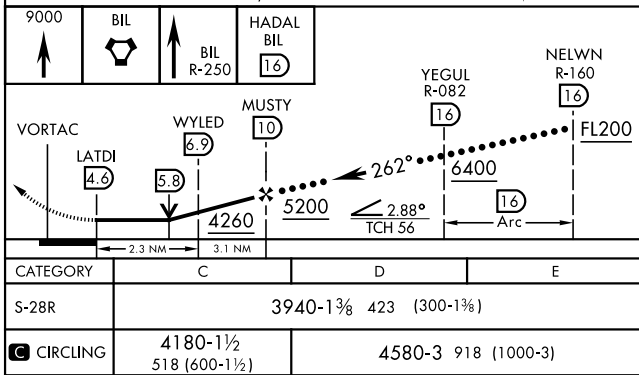
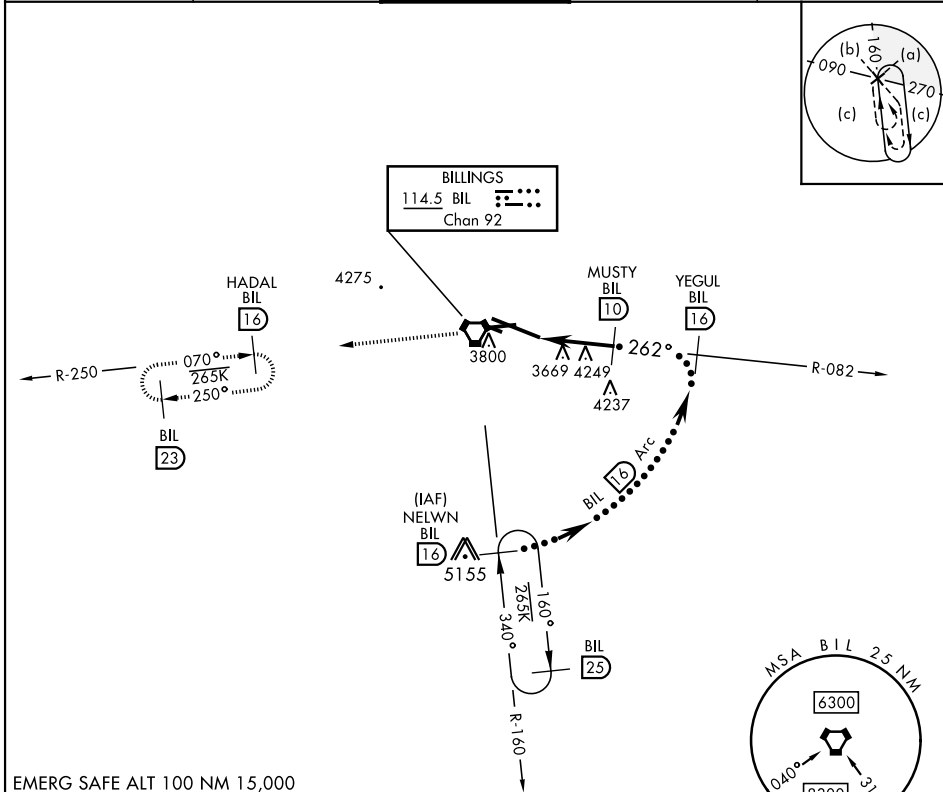
VORTAC BIL <b>114.5</b> Chan <b>92</b>	APCH CRS <b>262°</b>	Rwy Idg <b>10,518</b> TDZE <b>3517</b> Arprt Elev <b>3662</b>	AL-48 [USAF]	BILLINGS LOGAN INTL (KBIL)
--	-------------------------	--	--------------	----------------------------

DME required.

▼

MISSED APPROACH: Climb to 9000 on BIL VORTAC R-082 to BIL VORTAC, and on BIL VORTAC R-250 to HADAL/16 DME and hold, continue Climb-in-Hold to 9000.

ATIS <b>126.3</b>	BILLINGS APP CON <b>120.5 284.6</b>	BILLINGS TOWER <b>127.2 257.8</b>	GND CON <b>121.9</b>	CLNC DEL <b>121.9</b>
----------------------	--	--------------------------------------	-------------------------	--------------------------



# HI-VOR or TACAN RWY 28R

NW-1, 20 FEB 2025 to 20 MAR 2025

NW-1, 20 FEB 2025 to 20 MAR 2025