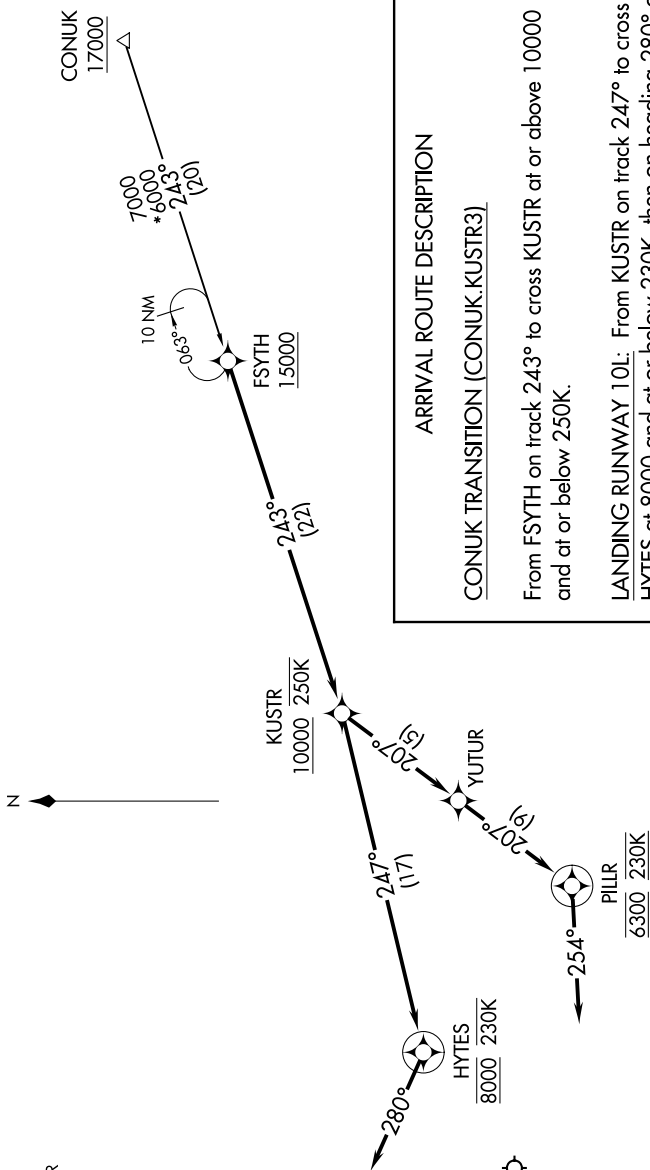


NW-1, 20 FEB 2025 to 20 MAR 2025

BILLINGS APP CON
120.5 284.6
ATIS
126.3
BILLINGS TOWER
127.2 257.8
GND CON
121.9

BILLINGS
BIL



ARRIVAL ROUTE DESCRIPTION

CONUK TRANSITION (CONUK.KUSTR3)

From FSYTH on track 243° to cross KUSTR at or above 10000 and at or below 250K.

LANDING RUNWAY 10L: From KUSTR on track 247° to cross HYPES at 8000 and at or below 230K, then on heading 280° or as assigned by ATC. Expect RADAR vectors to final approach course.

LANDING RUNWAY 28R: From KUSTR on track 207° to YUTUR, then on track 207° to cross PILLR at 6300 and at 230K, then on heading 254° or as assigned by ATC. Expect assigned approach or RADAR vectors to final approach course.

NOTE: RADAR required.

NOTE: RNAV 1.

NOTE: GPS required.

NOTE: Chart not to scale.

NW-1, 20 FEB 2025 to 20 MAR 2025