

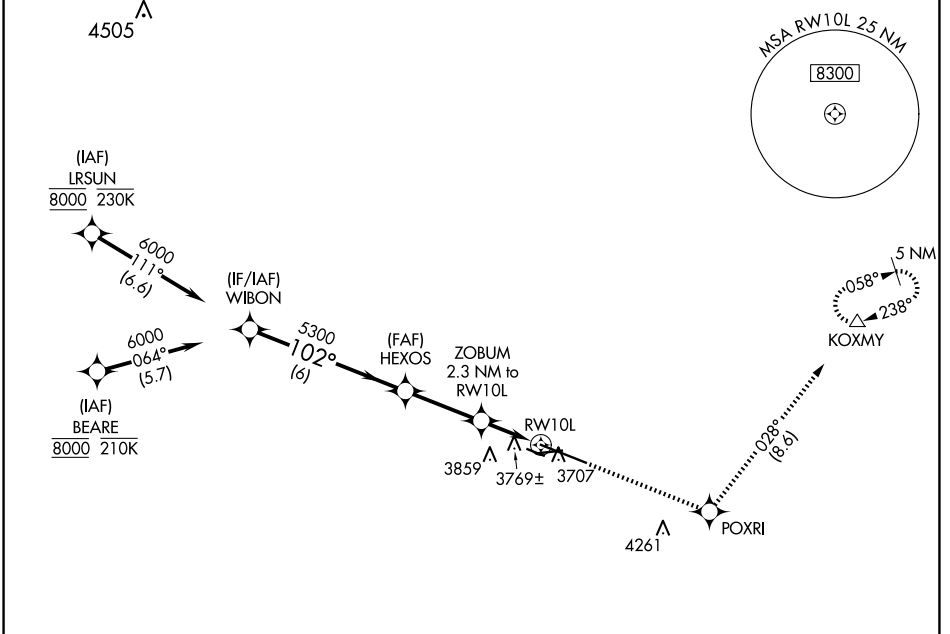
WAAS CH <b>50122</b> <b>W10A</b>	APP CRS <b>102°</b>	Rwy Idg <b>10518</b> TDZE <b>3585</b> Apt Elev <b>3662</b>
--	------------------------	--

# RNAV (GPS) RWY 10L

BILLINGS LOGAN INTL (BIL)

RNP APCH - GPS		MALSR	MISSED APPROACH: Climb to 6000 direct POXRI and on track 028° to KOXMY and hold.
<p><b>V</b> For uncompensated Baro-VNAV systems, LNAV/VNAV NA below -24°C or above 50°C. #RVR 1800 authorized with use of FD or AP or HUD to DA.</p>			

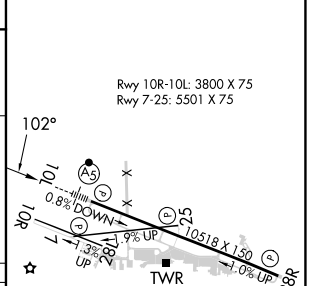
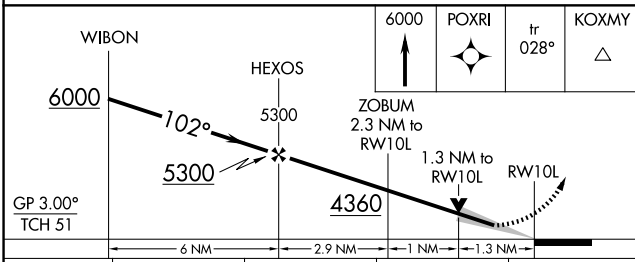
ATIS <b>126.3</b>	BILLINGS APP CON <b>120.5 284.6</b>	BILLINGS TOWER <b>127.2 257.8</b>	GND CON <b>121.9</b>	CLNC DEL <b>121.9</b>
----------------------	--	--------------------------------------	-------------------------	--------------------------



NW-1, 20 FEB 2025 to 20 MAR 2025

NW-1, 20 FEB 2025 to 20 MAR 2025

ELEV 3662	<b>D</b> TDZE 3585
-----------	--------------------



CATEGORY	A	B	C	D
LPV DA#	3785/24 200 (200-½)			
LNAV/VNAV DA	4041/45 456 (400-¾)			
LNAV MDA	4020/24	435 (400-½)	4020/40	435 (400-¾)
<b>C</b> CIRCLING	4160-1	498 (500-1)	4180-1½ 518 (600-1½)	4580-3 918 (1000-3)

REIL Rwy 25 and 28R  
HIRL Rwy 10L-28R  
MIRL Rwy 7-25 and 10R-28L