

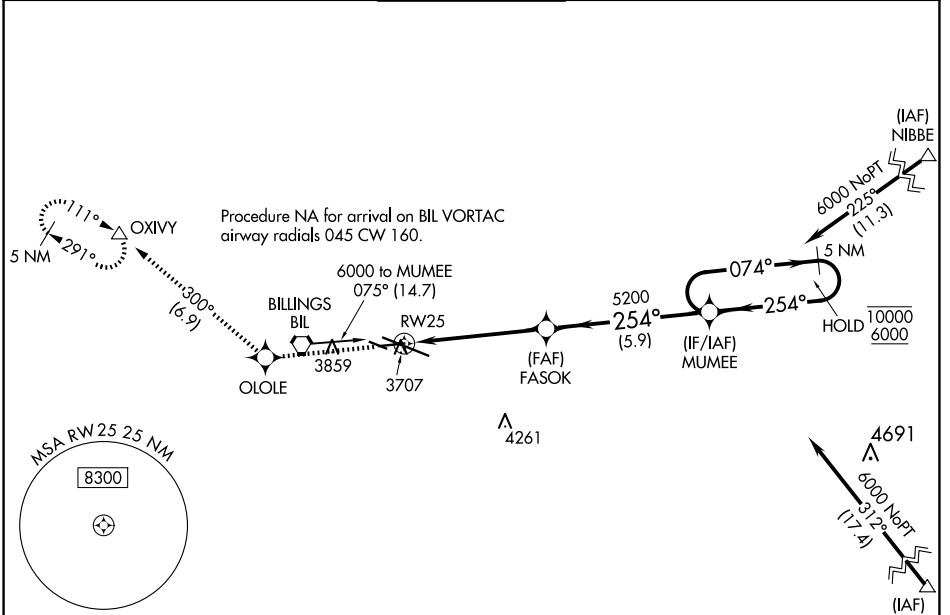
WAAS CH 78028 W25A	APP CRS 254°	Rwy Idg TDZE Apt Elev	5501 3586 3662
--	------------------------	-----------------------------	---

RNAV (GPS) RWY 25

BILLINGS LOGAN INTL (BIL)

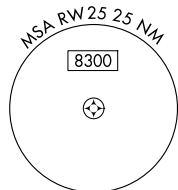
RNP APCH - GPS.		MISSED APPROACH: Climb to 6000 direct OLOLE and on track 300° to OXIVY and hold.		
<p>▼ For uncompensated Baro-VNAV systems, LNAV/VNAV NA below -25°C or above 54°C.</p>				

ATIS 126.3	BILLINGS APP CON 120.5 284.6	BILLINGS TOWER 127.2 257.8	GND CON 121.9	CLNC DEL 121.9
----------------------	--	--------------------------------------	-------------------------	--------------------------

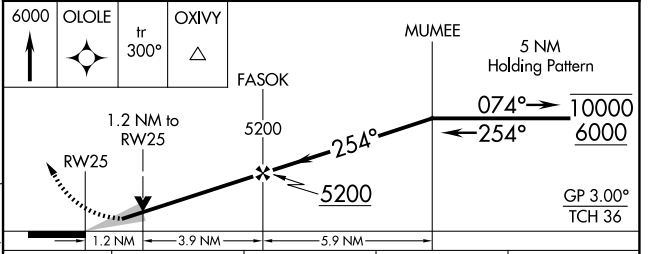
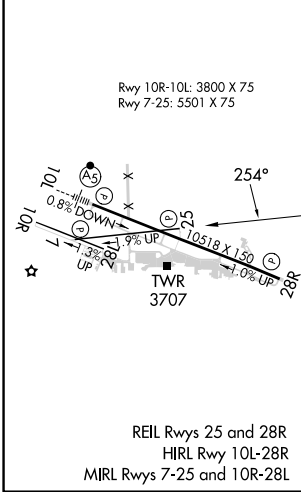


NW-1, 20 FEB 2025 to 20 MAR 2025

NW-1, 20 FEB 2025 to 20 MAR 2025



ELEV 3662	D	TDZE 3586
-----------	----------	-----------



CATEGORY	A	B	C	D
LPV DA		3836-3/4	250 (200-3/4)	
LNAV/VNAV DA		3920-1	334 (300-1)	
LNAV MDA		3960-1	374 (300-1)	
C CIRCLING	4160-1	498 (500-1)	4180-1 1/2 518 (600-1 1/2)	4580-3 918 (1000-3)