

RNAV (RNP) Z RWY 28R

BILLINGS LOGAN INTL (BIL)

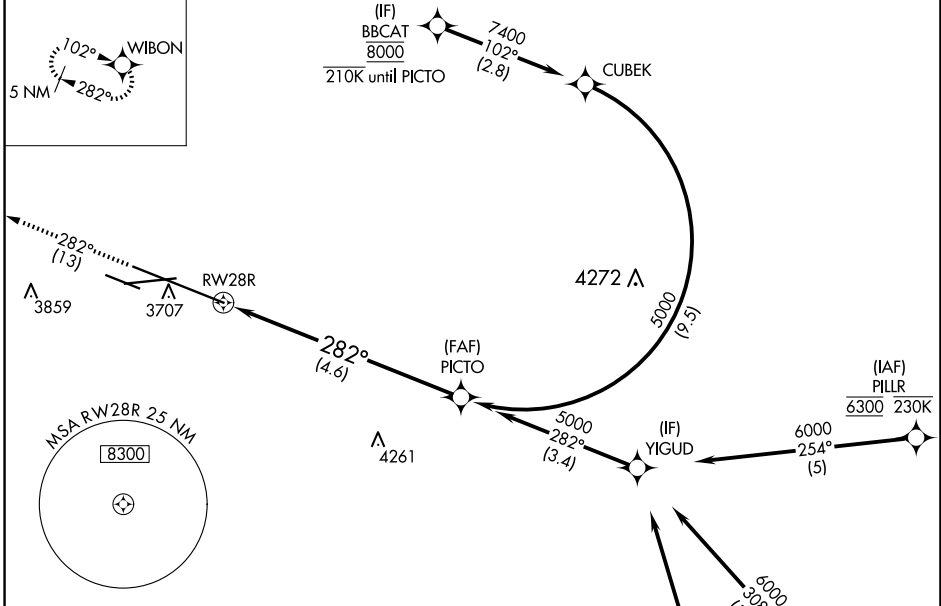
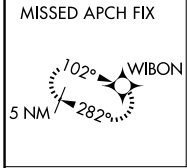
APP CRS	Rwy Idg	10518
282°	TDZE	3517
	Apt Elev	3662

RNP AR APCH-GPS

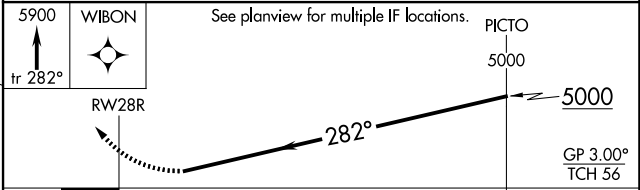
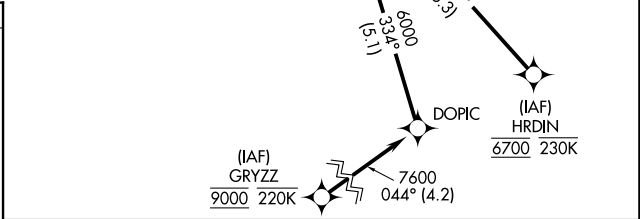
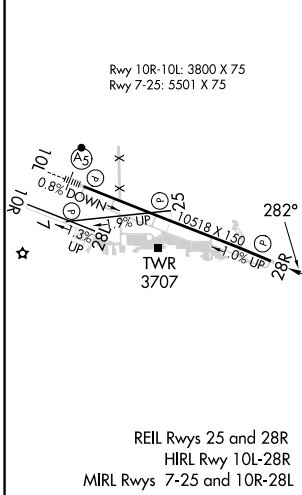
▼ For uncompensated Baro-VNAV systems, procedure NA below -24°C or above 50°C.

MISSED APPROACH: Climb to 5900 on track 282° to WIBON and hold.

ATIS 126.3	BILLINGS APP CON 120.5 284.6	BILLINGS TOWER 127.2 257.8	GND CON 121.9	CLNC DEL 121.9
----------------------	----------------------------------------	--------------------------------------	-------------------------	--------------------------



ELEV 3662	D	TDZE 3517
-----------	----------	-----------



CATEGORY	A	B	C	D
RNP 0.30 DA	3903-1¼		386 (300-1¼)	

AUTHORIZATION REQUIRED

NW-1, 20 FEB 2025 to 20 MAR 2025

NW-1, 20 FEB 2025 to 20 MAR 2025