

BILOXI, MISSISSIPPI

ILS or LOC RWY 22

LOC I-BIX 109.7	APCH CRS 217°	Rwy ldg THRE Arprt Elev 6630 17 33	AL-49 [USAF]	KEESLER AFB (KBIX)
---------------------------	-------------------------	------------------------------------------------------------------------	--------------	--------------------

RADAR or DME required.

ALSF-1 

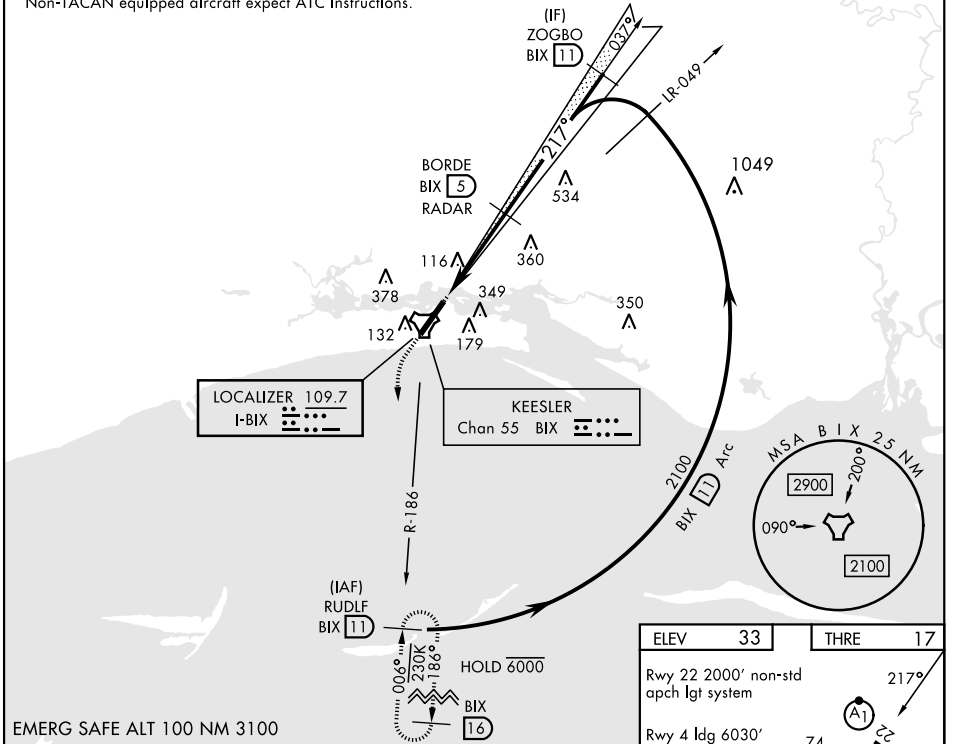
† MISSED APPROACH: Climb to 800 tracking 217°, upon reaching 800 turn left to intercept BIX TACAN R-186 climbing to 2200 to 11 DME (RUDLF) and hold.

▼ * When ALS inop, increase CAT AB RVR to 55, vis to 1 mile, CAT CD vis to 1 1/2 miles.

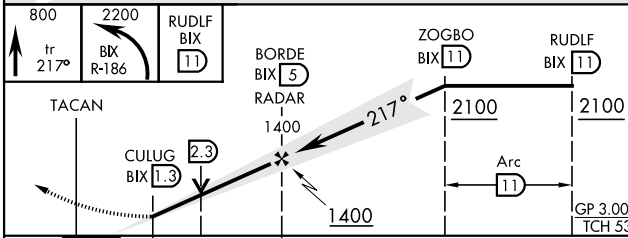
ATIS 281.55	GULFPORT APP CON 124.6 354.1 (130°- 309°) 127.5 254.25 (310°- 129°)	TOWER ★ 120.75 269.075	GND CON 121.8 275.8	CLNC DEL 121.8 275.8
-----------------------	-----------------------------------------------------------------------------------------	----------------------------------	-------------------------------	--------------------------------

• 272

† Missed approach requires use of RNAV or ATC RADAR monitoring.
Non-TACAN equipped aircraft expect ATC instructions.



EMERG SAFE ALT 100 NM 3100



ELEV	33	THRE	17		
Rwy 22 2000' non-std apch lgt system					
Rwy 4 ldg 6030'					
Rwy 22 ldg 6630'					
HIRL Rwy 4-22					
REIL Rwy 4					
175	74	74	195		
195	74	45	195		
195	74	150/175	195		
195	74	195	195		
195	74	195	195		
FAF to MAP 3.7 NM					
Knots	60	90	120	150	180
Min:Sec	3:42	2:28	1:51	1:29	1:14

CATEGORY	A	B	C	D
S-ILS 22	217/40		200	(200-3/4)
S-LOC 22*	540/40	523 (600-3/4)	540-1/4	523 (600-1/4)
CIRCLING	580-1	660-1	680-1 3/4	680-2
	547 (600-1)	627 (700-1)	647 (700-1 3/4)	647 (700-2)

BILOXI, MISSISSIPPI

30° 25' N-88° 55' W

KEESLER AFB (KBIX)

Amtd 2 03NOV22

ILS or LOC RWY 22

SC-4, 20 FEB 2025 to 20 MAR 2025

SC-4, 20 FEB 2025 to 20 MAR 2025