

BILOXI, MISSISSIPPI

RNAV (GPS) RWY 4

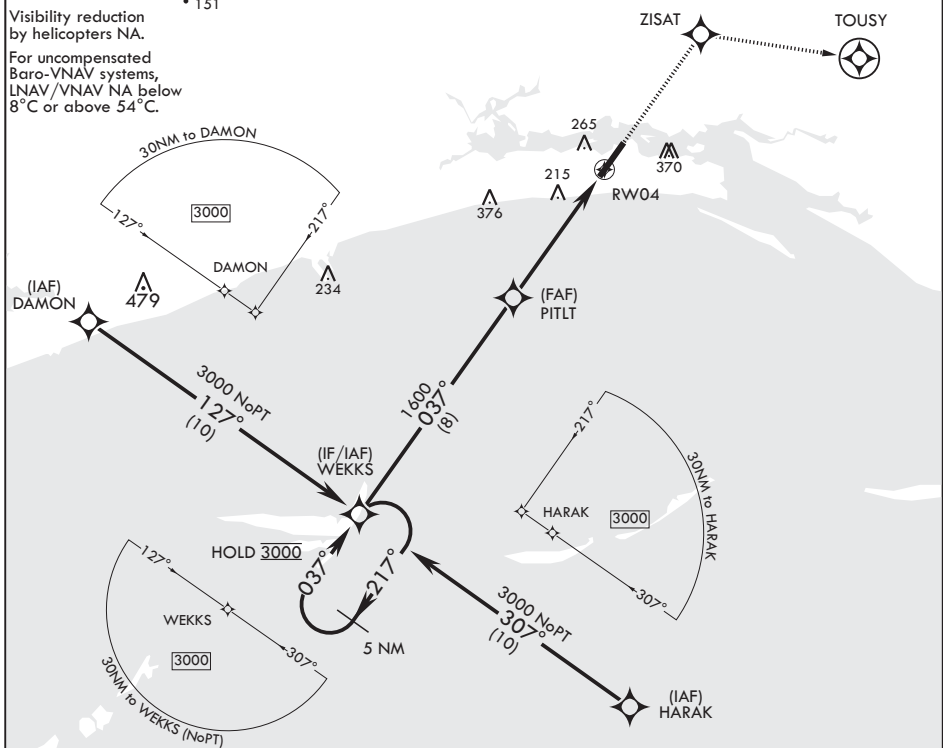
APCH CRS 037°	Rwy ldg TDZE Arprt Elev	6030 23 33
-------------------------	-------------------------------	---------------------------------------

AL-49 (USAF)

KEESLER AFB (KBIX)

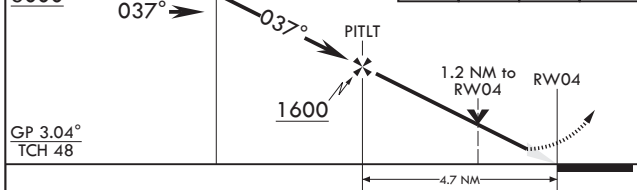
RNP APCH ▽	MISSED APPROACH: Climb to 2100 direct ZISAT and track 101° to TOUSY. Expect ATC instructions.
---------------	---

ATIS 281.55	GULFPORT APP CON/DEP CON 124.6 354.1 130° - 309° 127.5 254.25 310° - 129°	TOWER* 120.75 269.075	GND CON 121.8 275.8	CLNC DEL 121.8 275.8
-----------------------	---	---------------------------------	-------------------------------	--------------------------------



EMERG SAFE ALT 100 NM 3100

5 NM Holding Pattern	2100	ZISAT	TOUSY	ELEV 33	TDZE 23
3000	↑	⬠	⬠ tr 101°	Rwy 22 2000' non-std apch lgt system	
GP 3.04° TCH 48				Rwy 4 ldg 6030'	
				Rwy 22 ldg 6630'	



CATEGORY	A	B	C	D
LNAV/VNAV DA	391/55	368	(400-1)	
LNAV MDA	460/55 437 (500-1)	460-1¼ 437 (500-1¼)		
Ⓢ CIRCLING	580-1 547 (600-1)	660-1 627 (700-1)	680-1¼ 647 (700-1¼)	680-2 647 (700-2)

BILOXI, MISSISSIPPI
Amdt 2 07SEP23

30°25'N - 88°55'W

KEESLER AFB (KBIX)

RNAV (GPS) RWY 4

SC-4, 20 FEB 2025 to 20 MAR 2025

SC-4, 20 FEB 2025 to 20 MAR 2025