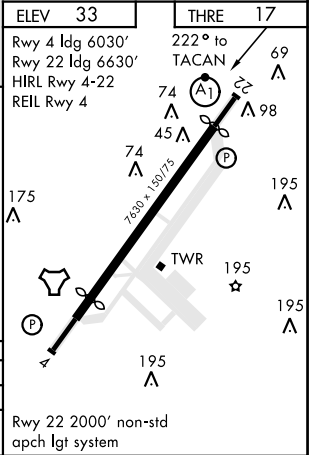
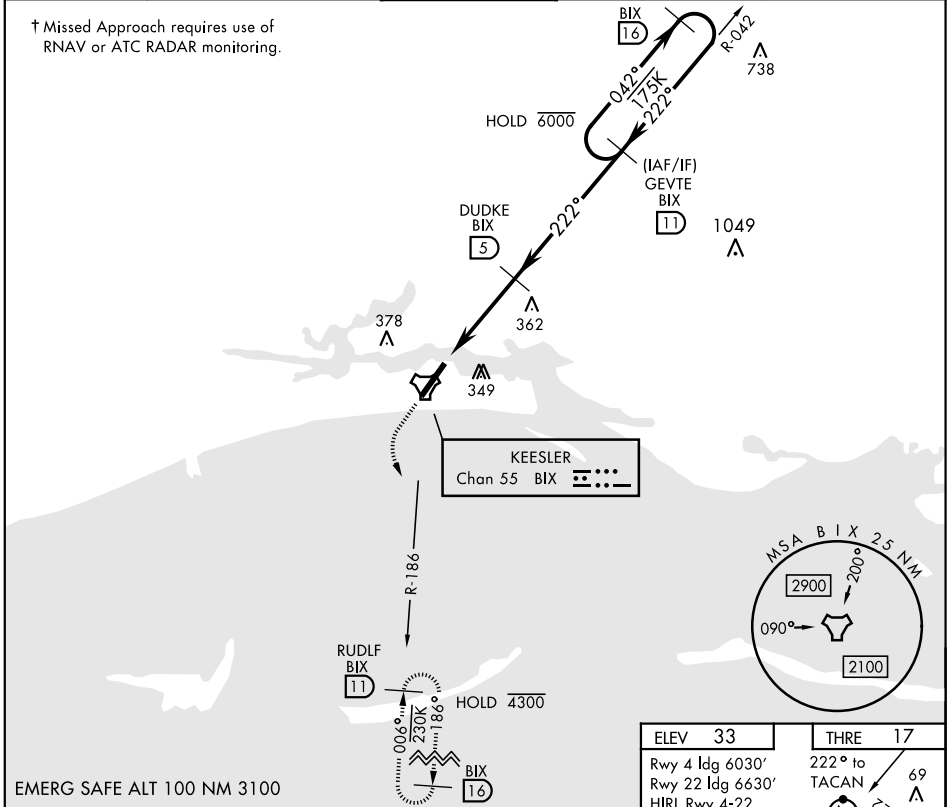


TACAN RWY 22

TACAN BIX Chan 55	APCH CRS 222°	Rwy ldg THRE 17 Arprt Elev 33	AL-49 [USAF]	KEESLER AFB (KBIX)
ATIS 281.55	GULFPORT APP CON 124.6 354.1 (130°-309°) 127.5 254.25 (310°-129°)	KEESLER TOWER * 120.75 269.075	GND CON 121.8 275.8	CLNC DEL 121.8 275.8



800	2200
↑ tr 215°	BIX R-186

CATEGORY	A	B	C	D
S-22*	620/40 603 (600-3/4)	620-1 660-1	620-1 1/2 680-1 3/4	603 (600-1 1/2)
CIRCLING	587 (600-1)	627 (700-1)	647 (700-1 3/4)	647 (700-2)

Rwy 22 2000' non-std
apch lgt system

TACAN RWY 22

SC-4, 20 FEB 2025 to 20 MAR 2025

SC-4, 20 FEB 2025 to 20 MAR 2025