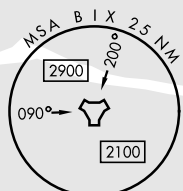
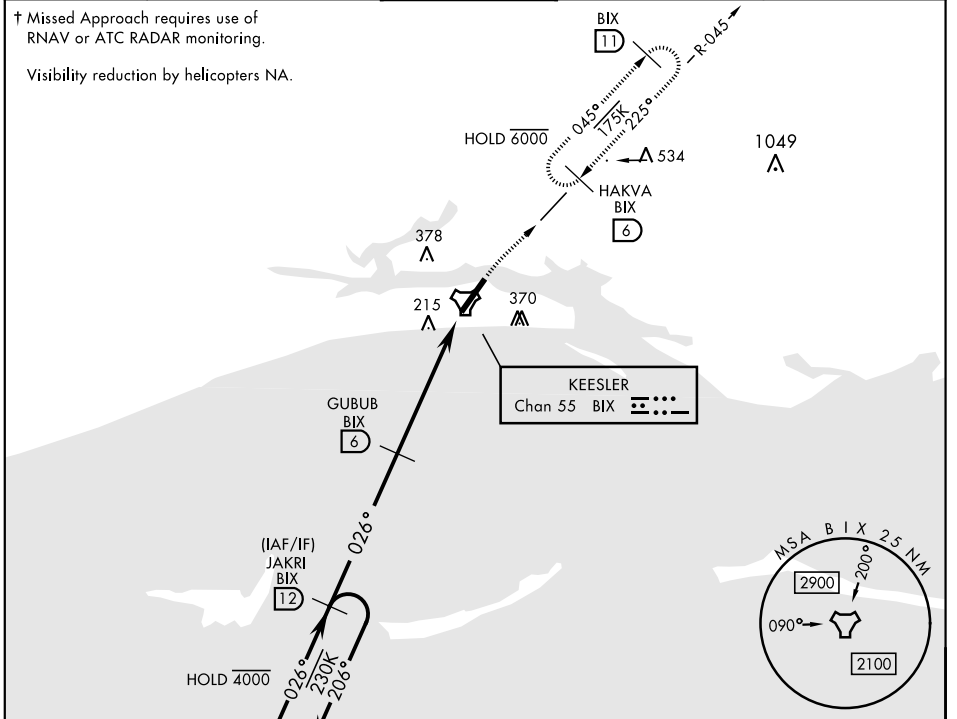


TACAN RWY 4

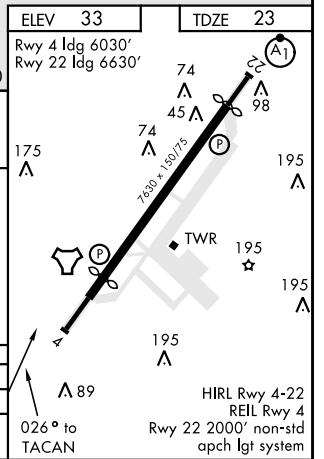
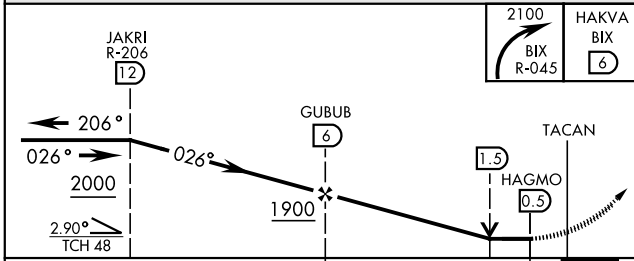
TACAN BIX Chan 55	APCH CRS 026°	Rwy ldg TDZE Arprt Elev 6030 23 33	AL-49 [USAF]	KEESLER AFB (KBIX)
----------------------	-------------------------	--	--------------	--------------------

† MISSED APPROACH: Turn right climbing to 2100 to intercept BIX TACAN R-045 to 6 DME (HAKVA) and hold.

ATIS 281.55	GULFPORT APP CON 124.6 354.1 (130°-309°) 127.5 254.25 (310°-129°)	KEESLER TOWER ★ 120.75 269.075	GND CON 121.8 275.8	CLNC DEL 121.8 275.8
-----------------------	---	--	-------------------------------	--------------------------------



ELEV 33	TDZE 23
Rwy 4 ldg 6030'	Rwy 22 ldg 6630'



CATEGORY	A	B	C	D
S-4	520/55 497 (500-1)	660-1	520-1 ³ / ₈ 497 (500-1 ³ / ₈)	680-2
CIRCLING	580-1 547 (600-1)	660-1 627 (700-1)	680-1 ³ / ₈ 647 (700-1 ³ / ₈)	680-2 647 (700-2)

TACAN RWY 4

SC-4, 20 FEB 2025 to 20 MAR 2025

SC-4, 20 FEB 2025 to 20 MAR 2025