

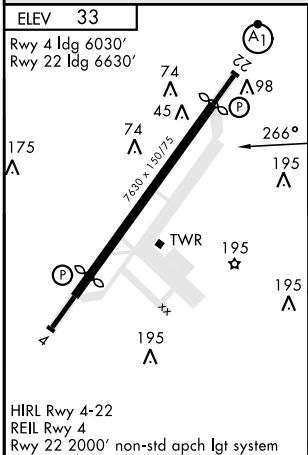
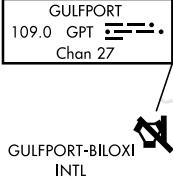
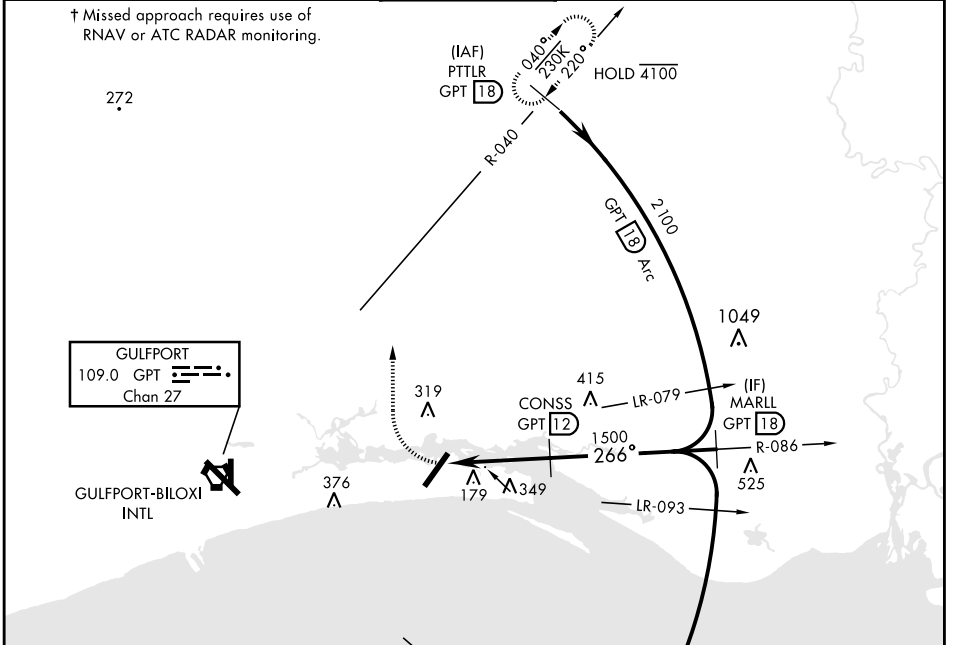
BILOXI, MISSISSIPPI

TACAN-B

VORTAC GPT 109.0 Chan 27	APCH CRS 266°	Rwy ldg TDZE Arpt Elev N/A N/A 33	AL-49 [USAF]	KEESLER AFB (KBIX)
--	-------------------------	---	--------------	--------------------

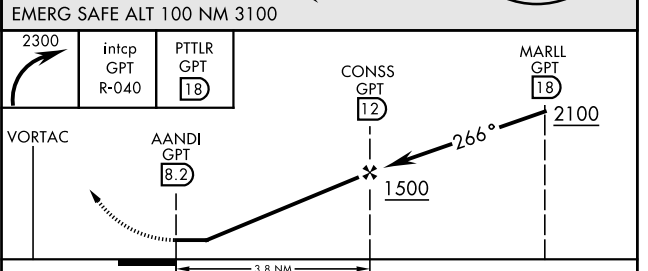
† MISSED APPROACH: Climbing right turn to 2300 inctcp GPT VORTAC R-040 to PTTLR (R-040/18 DME) and hold.

ATIS 281.55	GULFPORT APP CON 124.6 354.1 (130°-309°) 127.5 254.25 (310°-129°)	TOWER ★ 120.75 269.075	GND CON 121.8 275.8	CLNC DEL 121.8 275.8
-----------------------	---	----------------------------------	-------------------------------	--------------------------------



HIRL Rwy 4-22
REIL Rwy 4
Rwy 22 2000' non-std apch lgt system

FAF to MAP 3.8 NM					
Knots	60	90	120	150	180
Min:Sec	3:48	2:32	1:54	1:31	1:16



CATEGORY	A	B	C	D
	620-1 587 (600-1)	660-1 627 (700-1)	680-1¾ 647 (700-1¾)	680-2 647 (700-2)
CIRCLING				

BILOXI, MISSISSIPPI 30° 25' N-88° 55' W KEESLER AFB (KBIX)

Amdt 3 03NOV22

TACAN-B

SC-4, 20 FEB 2025 to 20 MAR 2025

SC-4, 20 FEB 2025 to 20 MAR 2025