

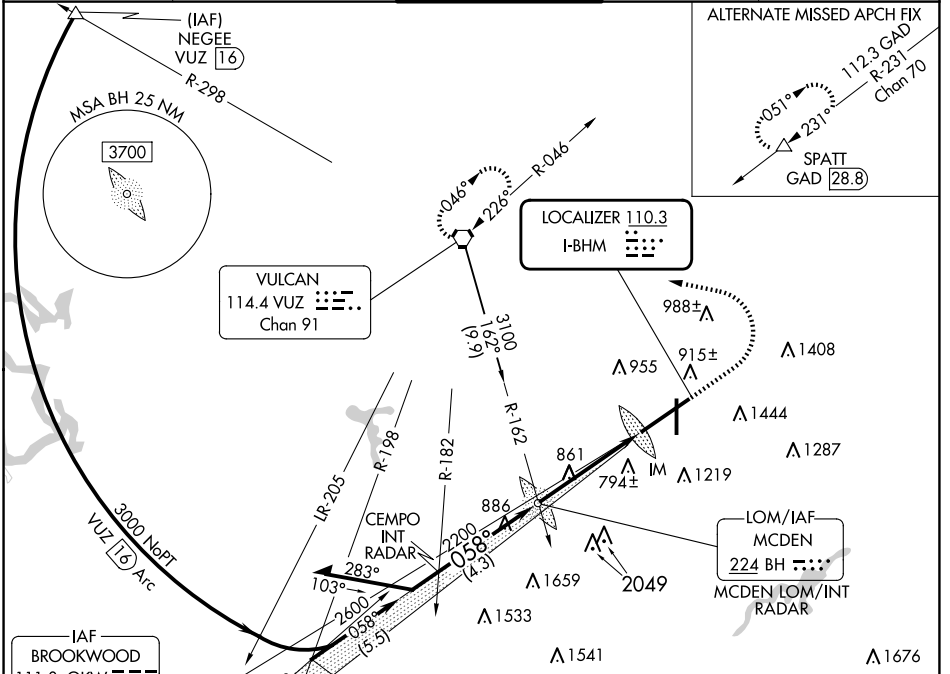
LOC I-BHM <b>110.3</b>	APP CRS <b>058°</b>	Rwy ldg <b>12007</b> TDZE <b>606</b> Apt Elev <b>650</b>
---------------------------	------------------------	--

# ILS RWY 6 (CAT II)

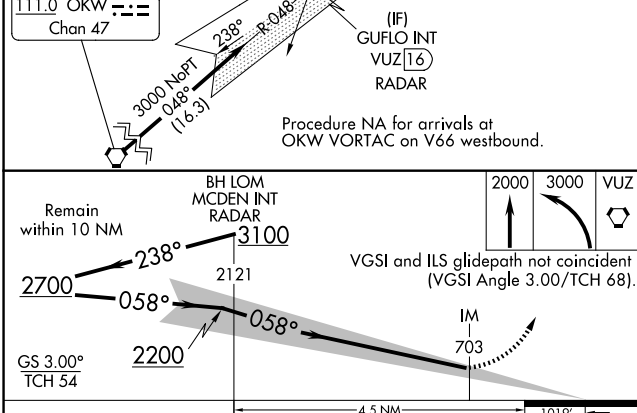
BIRMINGHAM-SHUTTLESWORTH INTL (BHM)

RNP APCH-GPS. From OKW VORTAC.		ALSF-2 	MISSED APPROACH: Climb to 2000 then climbing left turn to 3000 direct VUZ VORTAC and hold.	
--------------------------------	--	------------	--	--

ATIS <b>119.4 270.1</b>	BIRMINGHAM APP CON <b>123.8 256.8</b>	BIRMINGHAM TOWER <b>119.9 317.725</b>	GND CON <b>121.7 348.6</b>	CLNC DEL <b>125.675 305.2</b>
----------------------------	--	--	-------------------------------	----------------------------------

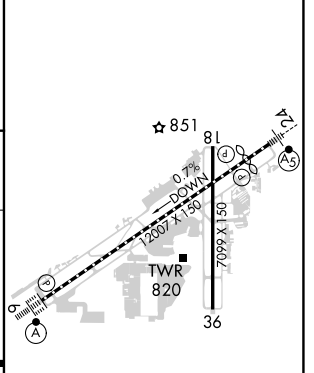


Procedure NA for arrivals at OKW VORTAC on V66 westbound.



ELEV 650	<b>D</b>	TDZE 606
----------	----------	----------

CATEGORY	A	B	C	D
S-ILS 6	RA 118/12 100		DA 706	
<b>CATEGORY II ILS - SPECIAL AIRCREW &amp; AIRCRAFT CERTIFICATION REQUIRED</b>				



REIL Rwys 18 and 36  
TDZ/CL Rwy 6  
HIRL Rwy 6-24  
MIRL Rwy 18-36

SE-4, 20 FEB 2025 to 20 MAR 2025

SE-4, 20 FEB 2025 to 20 MAR 2025