

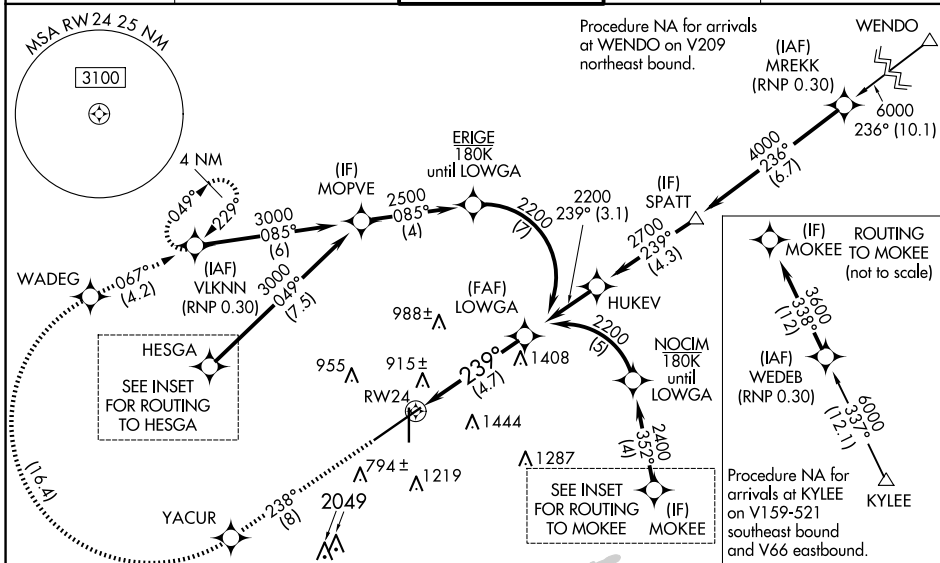
APP CRS	Rwy Idg	<b>10801</b>
<b>239°</b>	TDZE	<b>641</b>
	Apt Elev	<b>650</b>

# RNAV (RNP) Z RWY 24

BIRMINGHAM-SHUTTLESWORTH INTL (BHM)

RNP AR APCH. RF required.	MALSR	MISSED APPROACH: Climb to 3000 on track 238° to YACUR then, right turn to WADEG, then on track 067° to VLKNN and hold.
▼ For uncompensated Baro-VNAV systems, procedure NA below -8°C or above 54°C. For inop ALS, increase RNP 0.15 all Cats visibility to 1 3/8 and increase RNP 0.30 all Cats visibility to 1 3/4 SM.		

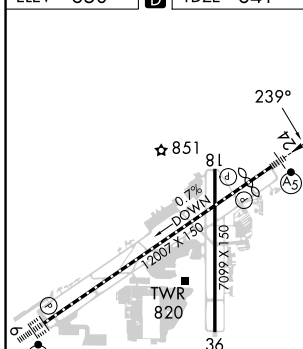
ATIS <b>119.4 270.1</b>	BIRMINGHAM APP CON <b>123.8 256.8</b>	BIRMINGHAM TOWER <b>119.9 317.725</b>	GND CON <b>121.7 348.6</b>	CLNC DEL <b>125.675 305.2</b>
----------------------------	--	--	-------------------------------	----------------------------------



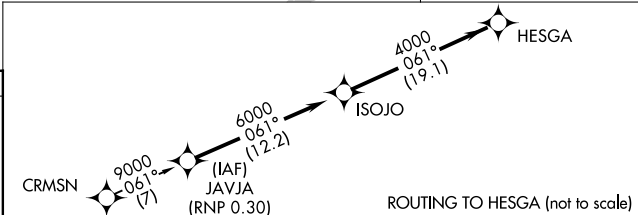
SE-4, 20 FEB 2025 to 20 MAR 2025

SE-4, 20 FEB 2025 to 20 MAR 2025

ELEV	650	<b>D</b>	TDZE	641
------	-----	----------	------	-----



REIL Rws 18 and 36	TDZ/CL Rwy 6	HIRL Rwy 6-24	MIRL Rwy 18-36
--------------------	--------------	---------------	----------------



3000	tr 238°	YACUR	tr 067°	VLKNN	LOWGA
		2200			2200
GP 3.00° TCH 52					

CATEGORY	A	B	C	D
RNP 0.15 DA		1149-1	508 (500-1)	
RNP 0.30 DA		1243-1 3/8	602 (600-1 3/8)	

## AUTHORIZATION REQUIRED