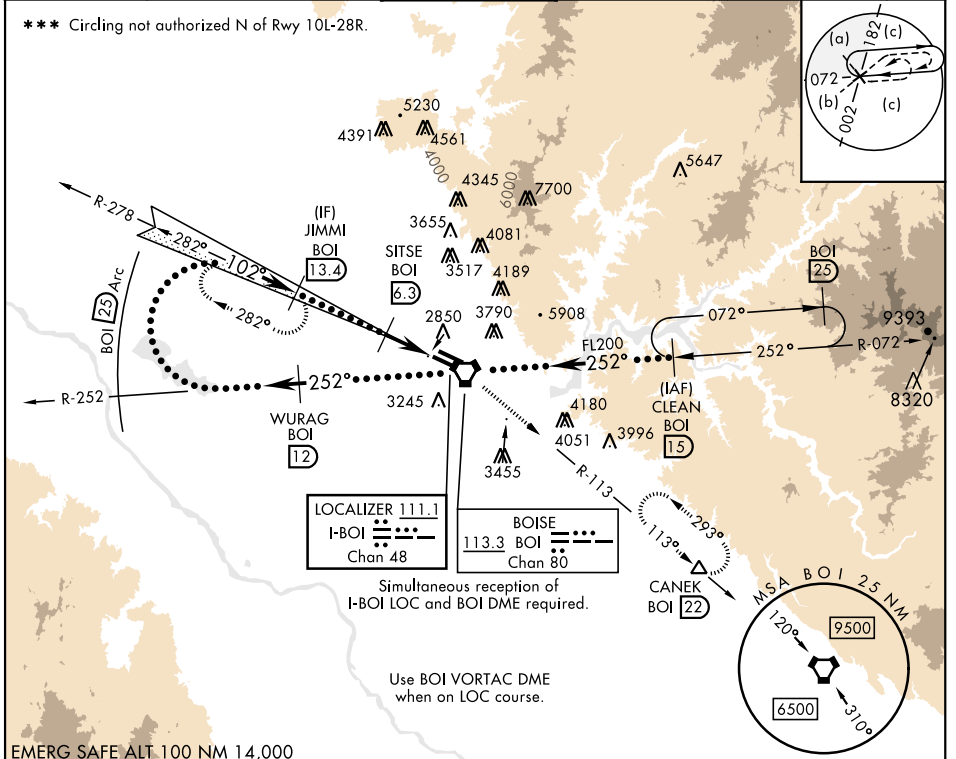


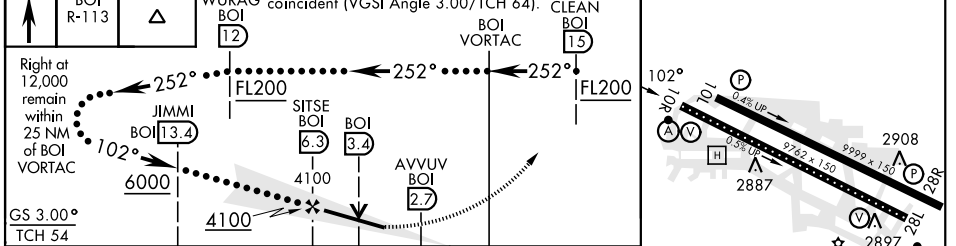
HI-ILS Z or LOC Z RWY 10R

LOC I-BOI 111.1	APCH CRS 102°	Rwy Ldg TDZE Arprt Elev 9762 2836 2872	[USAF]	BOISE AIR TERMINAL (GOWEN FLD)	(KBOI)
DME required			ALSF-2	MISSED APPROACH: Climb to 7300 on BOI VORTAC R-113 to CANEK/BOI 22 DME and hold.	
** When ALS inop, increase RVR to 40 and vis to 3/4 mile. *** When ALS inop, increase RVR to 55 and vis to 1 mile.					

ATIS 123.9 290.4	BIG SKY APP CON 119.6 269.4	BOISE TOWER 118.1 257.8	GND CON 121.7 348.6	CLNC DEL 125.9 323.2	ASOS
----------------------------	---------------------------------------	-----------------------------------	-------------------------------	--------------------------------	------



EMERG SAFE ALT 100 NM 14,000	7300	BOI R-113	CANEK	WURAG BOI 12	VGSI and ILS glidepath not coincident (VGSI Angle 3.00/TCH 64).	CLEAN BOI 15	ELEV 2872	TDZE 2836
------------------------------	------	-----------	-------	--------------	---	--------------	-----------	-----------



CATEGORY	C	D	E
S-ILS 10R **	3036/18	200	(200-1/2)
S-LOC 10R **	3200/35	364	(400-3/8)
CIRCLING ***	3640-2 1/4 768 (800-2 1/4)	3820-3 948 (1000-3)	3880-3 1008 (1100-3)

TDZL/CL Rwy 10R-28L
HIRL Rwy 10L-28R, 10R-28L
REIL Rwy 10L

HI-ILS Z or LOC Z RWY 10R



NW-1, 20 FEB 2025 to 20 MAR 2025

NW-1, 20 FEB 2025 to 20 MAR 2025