

BOISE, IDAHO

# HI-VOR or TACAN RWY 10R

VORTAC BOI <b>113.3</b> Chan 80	APCH CRS <b>098°</b>	Rwy Idg TDZE Arpt Elev <b>9762</b> <b>2836</b> <b>2872</b>
---------------------------------------	-------------------------	---

[USAF]

BOISE AIR TERMINAL (GOWEN FLD) (KBOI)

DME required

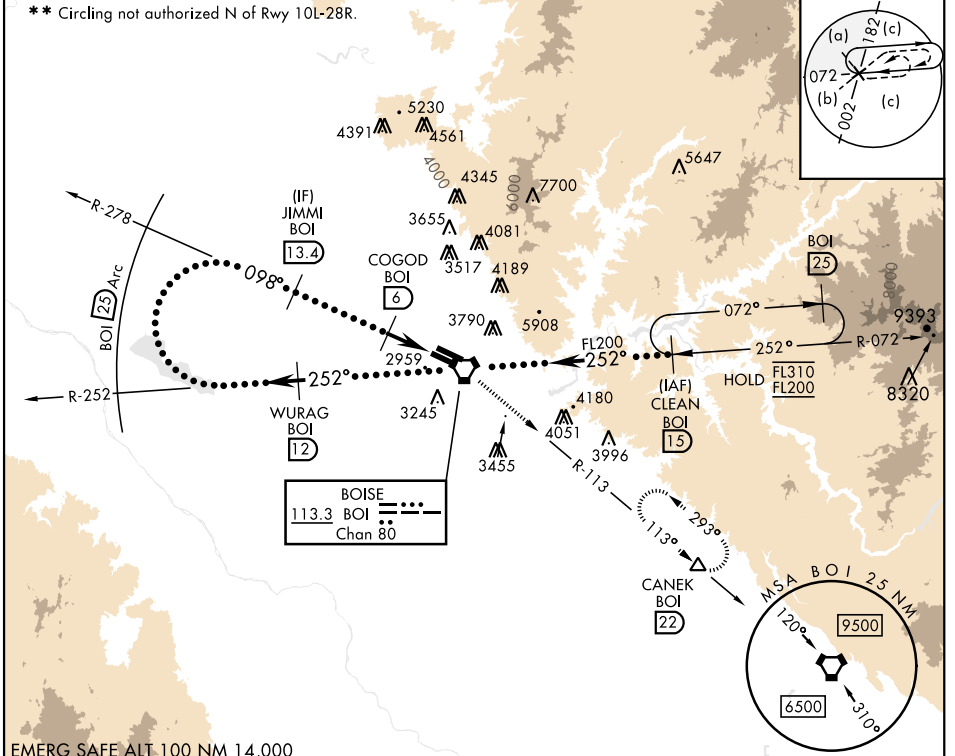
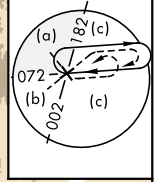


MISSED APPROACH: Climb to 7300 on BOI VORTAC R-113 to CANEK/22 DME and hold.

\* When ALS inop, increase RVR to 60 and vis to 1¼ miles.

ATIS <b>123.9 290.4</b>	BIG SKY APP CON <b>119.6 269.4</b>	BOISE TOWER <b>118.1 257.8</b>	GND CON <b>121.7 348.6</b>	CLNC DEL <b>125.9 323.2</b>	ASOS
----------------------------	---------------------------------------	-----------------------------------	-------------------------------	--------------------------------	------

\*\* Circling not authorized N of Rwy 10L-28R.

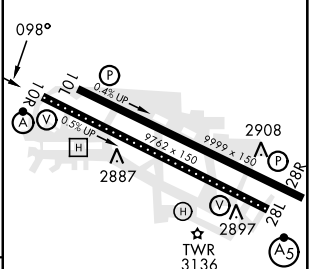
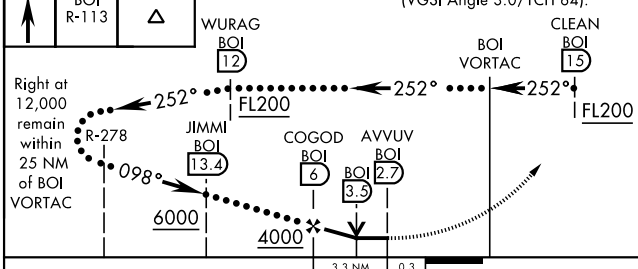


NW-1, 20 FEB 2025 to 20 MAR 2025

NW-1, 20 FEB 2025 to 20 MAR 2025

EMERG SAFE ALT 100 NM 14,000

7300	BOI R-113	CANEK	VGSI and descent angles not coincident (VGSI Angle 3.0/TCH 64).	ELEV 2872	TDZE 2836
------	-----------	-------	---	-----------	-----------



CATEGORY	C	D	E
S-10R *	3220/35 384 (400-5%)	3220/35	384 (400-5%)
** CIRCLING	3740-2½ 768 (800-2¼)	3820-3 948 (1000-3)	3880-3 1008 (1100-3)

TDZL/CL Rwy 10R-28L  
HIRL Rwys 10L-28R, 10R-28L  
REIL Rwy 10L

BOISE, IDAHO

43°34'N-116°13'W

BOISE AIR TERMINAL (GOWEN FLD) (KBOI)

Amtd 2 08SEP22

# HI-VOR or TACAN RWY 10R