

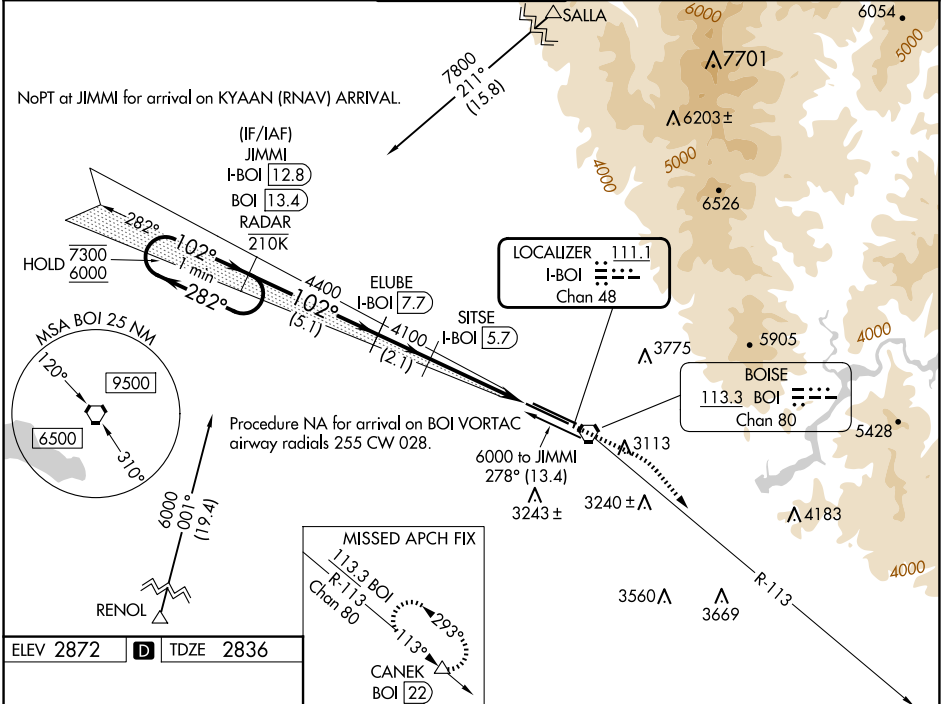
LOC/DME I-BOI 111.1 Chan 48	APP CRS 102°	Rwy Idg 9763 TDZE 2836 Apt Elev 2872
--	------------------------	--

ILS Y RWY 10R (CAT II & III)

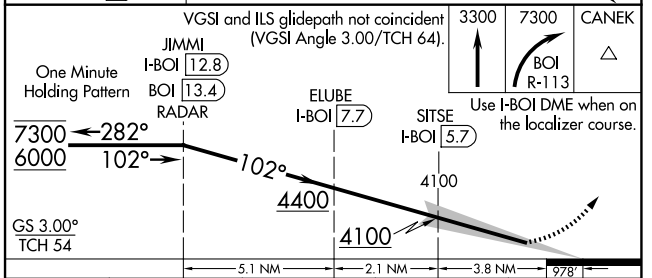
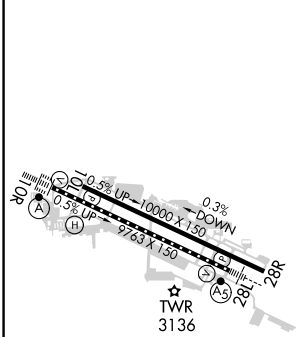
BOISE AIR TRML/GOWEN FLD (BOI)

DME required. RNAV 1 - GPS. From SALLA and RENOL.		ALSF-2	MISSED APPROACH: Climb to 3300 then climbing right turn to 7300 on BOI VORTAC R-113 to CANEK/BOI VORTAC 22 DME and hold.	
<p>▼ CAT II: RVR 1000 authorized with specific OPSPEC, MSPEC, or LOA approval and use of autoland or HUD to touchdown.</p>				

D-ATIS 123.9 290.4	BIG SKY APP CON 119.6 269.4	BOISE TOWER 118.1 257.8	GND CON 121.7 348.6	CLNC DEL 125.9 323.2
------------------------------	---------------------------------------	-----------------------------------	-------------------------------	--------------------------------



ELEV 2872	D TDZE 2836
-----------	--------------------



VGSI and ILS glidepath not coincident (VGSI Angle 3.00/TCH 64).	3300	7300	CANEK	
One Minute Holding Pattern	JIMMI I-BOI 12.8 BOI 13.4 RADAR	ELUBE I-BOI 7.7	SITSE I-BOI 5.7	
7300 ← 282°	102° →	102° →	4100	
6000	4400	4100	978'	
GS 3.00° TCH 54	5.1 NM	2.1 NM	3.8 NM	
CATEGORY	A	B	C	D
S-ILS 10R	CAT II RA 124/12 100 DA 2936			
S-ILS 10R	CAT III RVR 03			

CATEGORY II & III ILS - SPECIAL AIRCREW & AIRCRAFT CERTIFICATION REQUIRED

REIL Rwy 10L
TDZ/CL Rws 10R and 28L
HIRL Rws 10L-28R and 10R-28L