

(KYAAN.KYAAN4) 22195

KYAAN FOUR ARRIVAL (RNAV)

AL-57 (FAA)

BOISE AIR TRML/GOWEN FLD (BOI)

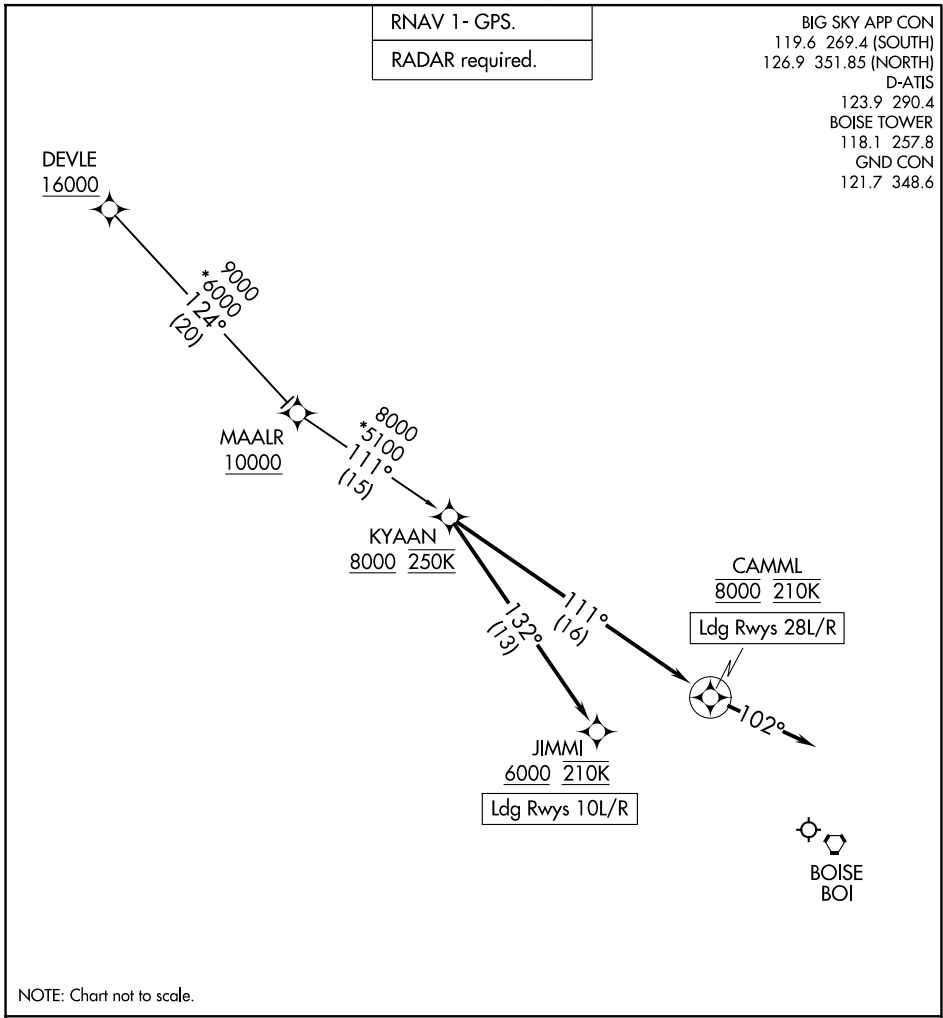
BOISE, IDAHO

RNAV 1 - GPS.
RADAR required.

BIG SKY APP CON
 119.6 269.4 (SOUTH)
 126.9 351.85 (NORTH)
 D-ATIS
 123.9 290.4
 BOISE TOWER
 118.1 257.8
 GND CON
 121.7 348.6

NW-1, 20 FEB 2025 to 20 MAR 2025

NW-1, 20 FEB 2025 to 20 MAR 2025



NOTE: Chart not to scale.

ARRIVAL ROUTE DESCRIPTION

DEVLE TRANSITION (DEVLE.KYAAN4)

LANDING RUNWAYS 10L/R: From KYAAN on track 132° to cross JIMMI at or above 6000 and at 210K. Expect assigned approach or RADAR vectors to final approach course.

LANDING RUNWAYS 28L/R: From KYAAN on track 111° to cross CAMML at 8000 and at 210K, then on track 102°. Expect assigned approach or RADAR vectors to final approach course.

KYAAN FOUR ARRIVAL (RNAV)

(KYAAN.KYAAN4) 14JUL22

BOISE, IDAHO
BOISE AIR TRML/GOWEN FLD (BOI)