

APP CRS 282°	Rwy ldg 10000
	TDZE 2871
	Apt Elev 2871

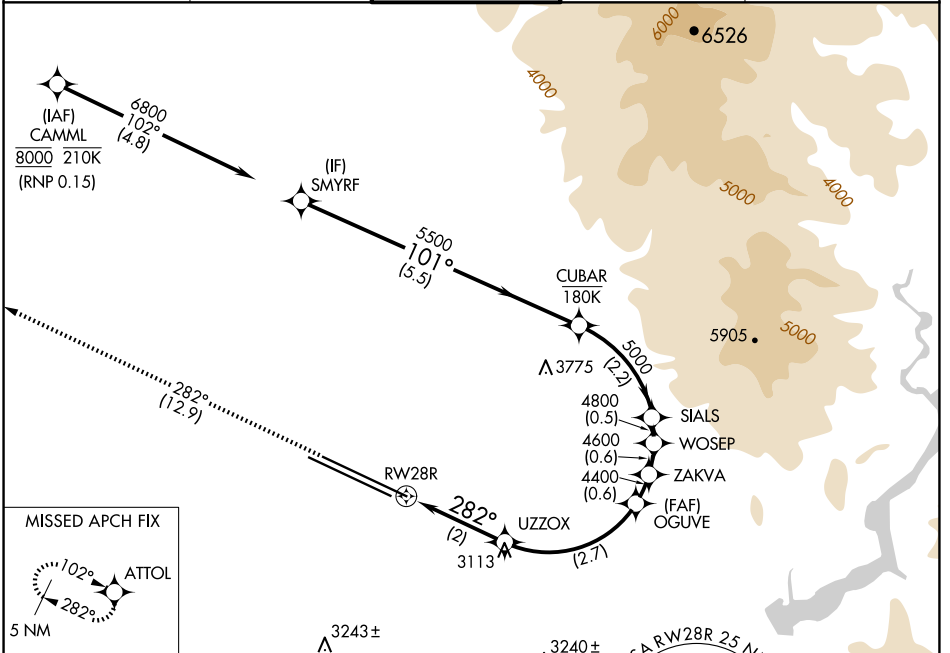
RNAV (RNP) X RWY 28R

BOISE AIR TRML/GOWEN FLD (BOI)

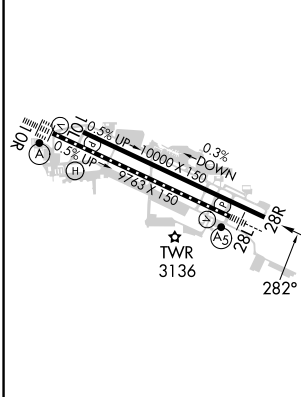
NA For uncompensated Baro-VNAV systems, procedure NA below -1.4°C (7°F) or above 52°C (126°F). RF required. GPS required.

MISSED APPROACH: Climb to 6000 on track 282° to ATTOL and hold.

D-ATIS 123.9 290.4	BIG SKY APP CON 119.6 269.4	BOISE TOWER 118.1 257.8	GND CON 121.7 348.6	CLNC DEL 125.9 323.2
------------------------------	---------------------------------------	-----------------------------------	-------------------------------	--------------------------------



ELEV 2871	D	TDZE 2871
-----------	----------	-----------



6000	ATTOL	VGSI and RNAV glidepath not coincident (VGSI Angle 3.00/TCH 70).	3560	3669
tr 282°			SIALS	CUBAR
	OGUVE	ZAKVA	WOSEP	SMYRF
	4400	4400	4800	6800
	3548		5000	
			4600	
			4800	
			5500	
			5500	
				GP 3.00°
				TCH 55

	2 NM	2.7 NM	0.6 NM	0.6 NM	0.5 NM	2.2 NM	5.5 NM
CATEGORY	A		B		C		D
RNP 0.15 DA	3288-1 $\frac{3}{8}$ 417 (500-1 $\frac{3}{8}$)						

REIL Rwy 10L
TDZ/CL Rwy 10R and 28L
HIRL Rwy 10L-28R and 10R-28L

BOISE, IDAHO
Orig-A 07DEC17

43°34'N-116°13'W

BOISE AIR TRML/GOWEN FLD (BOI)
RNAV (RNP) X RWY 28R

AUTHORIZATION REQUIRED

NW-1, 20 FEB 2025 to 20 MAR 2025

NW-1, 20 FEB 2025 to 20 MAR 2025