

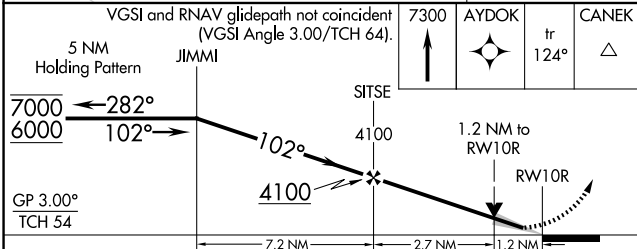
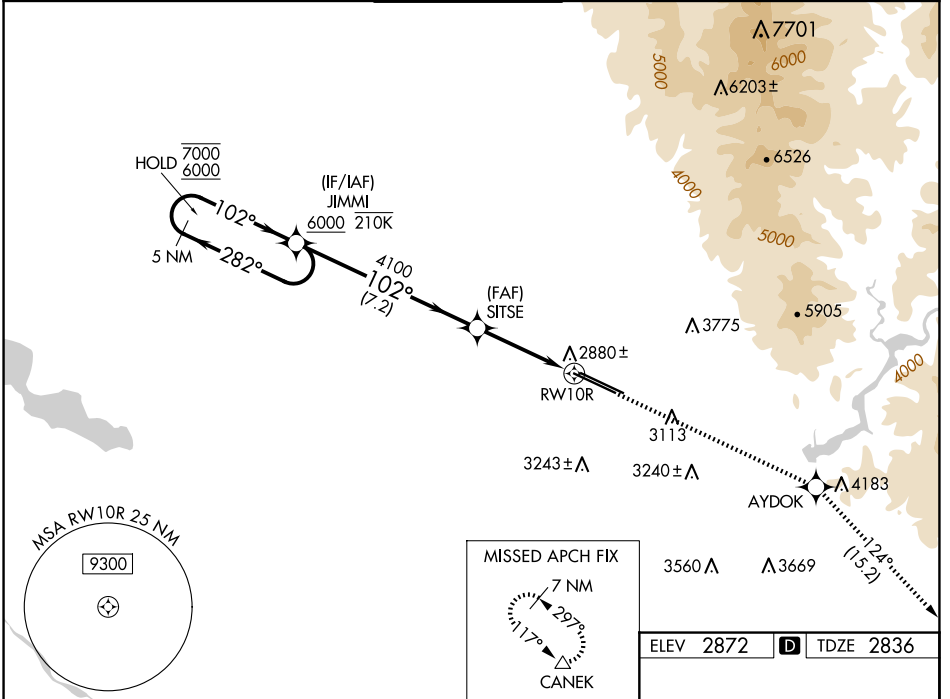
WAAS CH 40203 W10B	APP CRS 102°	Rwy Idg TDZE Apt Elev	9763 2836 2872
----------------------------------------	------------------------	-----------------------------	-------------------------------------------

RNAV (GPS) Y RWY 10R

BOISE AIR TRML/GOWEN FLD (BOI)

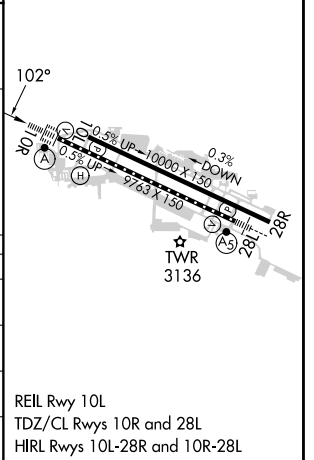
RADAR required for procedure entry. RNP APCH - GPS.		ALSIF-2 	MISSED APPROACH: Climb to 7300 direct AYDOK and on track 124° to CANEK and hold.
Circling NA north of Rwy 10L-28R. For uncompensated Baro-VNAV systems, LNAV/VNAV NA below -14°C or above 54°C.			

D-ATIS 123.9 290.4	BIG SKY APP CON 119.6 269.4	BOISE TOWER 118.1 257.8	GND CON 121.7 348.6	CLNC DEL 125.9 323.2
------------------------------	---------------------------------------	-----------------------------------	-------------------------------	--------------------------------



ELEV 2872		TDZE 2836
-----------	--	-----------

CATEGORY	A	B	C	D
LPV DA	3036/18		200 (200-½)	
LNAV/VNAV DA	3173/26		337 (400-½)	
LNAV MDA	3260/24	424 (400-½)	3260/40	424 (400-¾)
CIRCLING	3440-1	568 (600-1)	3640-2¼ 768 (800-2¼)	3820-3 948 (1000-3)



NW-1, 20 FEB 2025 to 20 MAR 2025

NW-1, 20 FEB 2025 to 20 MAR 2025