
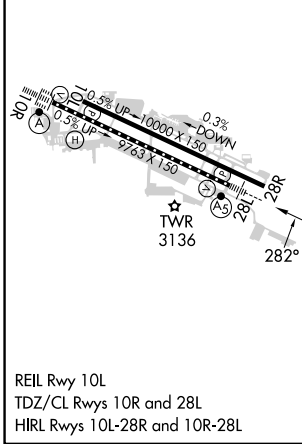
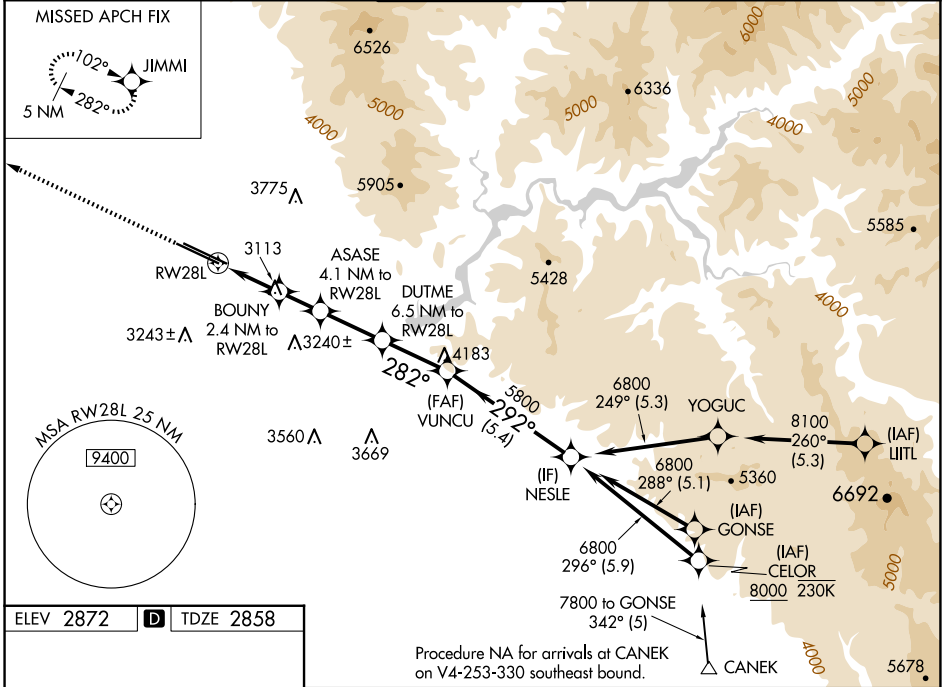


WAAS CH 7702 W28A	APP CRS 282°	Rwy Idg TDZE Apt Elev	9763 2858 2872
---------------------------------------	------------------------	-----------------------------	---

RNAV (GPS) Y RWY 28L

BOISE AIR TRML/GOWEN FLD (BOI)

RNP APCH - GPS.		BOISE TOWER 118.1 257.8		GND CON 121.7 348.6	CLNC DEL 125.9 323.2
<p>⚠ Circling NA north of Rwy 10L-28R. For uncompensated Baro-VNAV systems, LNAV/VNAV NA below -14°C or above 54°C. For inop ALS, increase LPV all Cats visibility to RVR 4500, and LNAV/VNAV all Cats visibility to RVR 6000.</p>		<p>MALSR</p> 		<p>MISSED APPROACH: Climb to 6000 direct JIMMI and hold, continue climb-in-hold to 6000.</p>	
D-ATIS 123.9 290.4	BIG SKY APP CON 119.6 269.4				



ELEV 2872	D	TDZE 2858		
<p>Procedure NA for arrivals at CANEK on V4-253-330 southeast bound.</p>				
6000	JIMMI	VGSI and RNAV glidepath not coincident (VGSI Angle 3.00/TCH 50).	NESLE	
		BOUNY 2.4 NM to RWY 28L	VUNCU 5800	
		ASASE 4.1 NM to RWY 28L	292° 6800	
		DUTME 6.5 NM to RWY 28L	282° 5800	
		1.4 NM to RWY 28L	4980	
		1 NM	4200	
		1.6 NM	3680	
		2.5 NM	282°	
		2.6 NM	292°	
		5.4 NM	GP 3.00° TCH 50	
CATEGORY	A	B	C	D
LPV DA		3160/24	302 (300-½)	
LNAV/VNAV DA		3267/40	409 (400-¾)	
LNAV MDA	3380/24	522 (600-½)	3380/55	522 (600-1)
C CIRCLING	3440-1	568 (600-1)	3640-2¼ 768 (800-2¼)	3820-3 948 (1000-3)

NW-1, 20 FEB 2025 to 20 MAR 2025

NW-1, 20 FEB 2025 to 20 MAR 2025