

LOC/DME I-BOS <b>110.3</b> Chan <b>40</b>	APP CRS <b>035°</b>	Rwy Idg <b>8851</b> TDZE <b>18</b> Apt Elev <b>19</b>
---	------------------------	---

# ILS RWY 4R (SA CAT I)

GENERAL EDWARD LAWRENCE LOGAN INTL (BOS)

RNP APCH - GPS. From GOSHI.  
DME required.

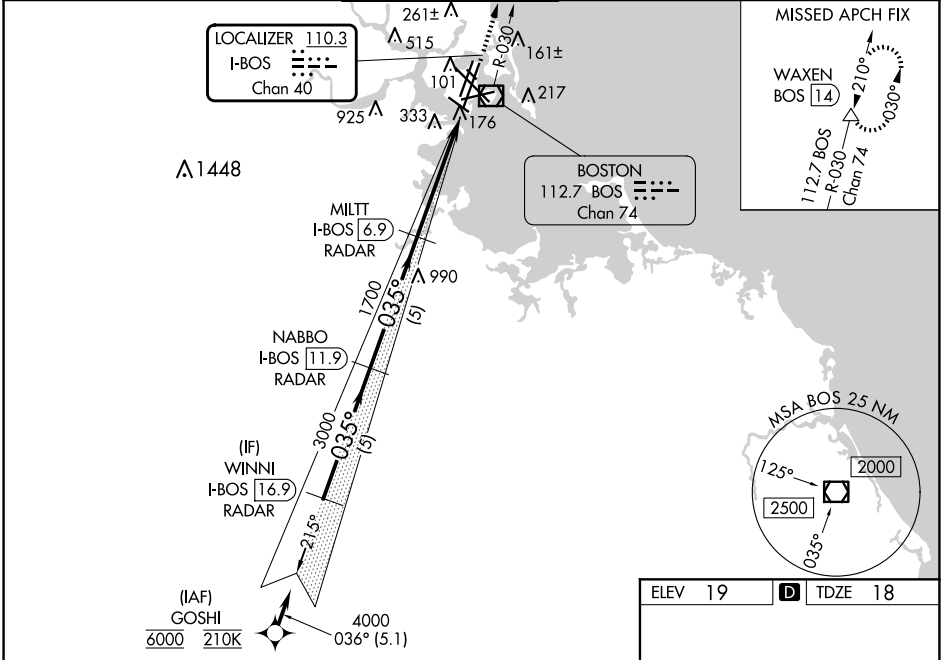
ALSIF-2



MISSED APPROACH: Climb to 3000 on BOS VOR/DME R-030 to WAXEN/BOS 14 DME and hold.

When control tower reports tall vessels in approach area, procedure NA. Requires specific OPSPEC, MSPEC, or LOA approval. Simultaneous approach authorized. Simultaneous operations require use of vertical guidance; maintain last assigned altitude until established on glideslope.

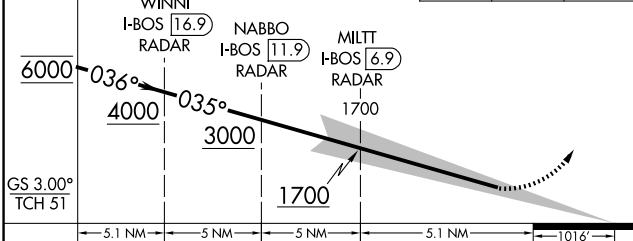
D-ATIS <b>135.0</b>	BOSTON APP CON <b>120.6 263.1</b>	BOSTON TOWER <b>128.8 257.8 (WEST)</b> <b>132.225 257.8 (EAST)</b>	GND CON <b>121.75 121.9</b>	CLNC DEL <b>121.65 257.8</b>	CPDLC
------------------------	--------------------------------------	--	--------------------------------	---------------------------------	-------



NE-1, 20 FEB 2025 to 20 MAR 2025

NE-1, 20 FEB 2025 to 20 MAR 2025

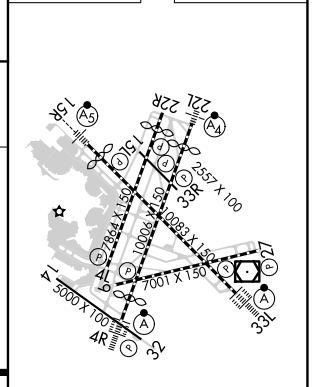
VGSI and ILS glidepath not coincident (VGSI Angle 3.00/TCH 67).	3000	BOS R-030	WAXEN
---	------	-----------	-------



CATEGORY	A	B	C	D
S-ILS 4R	RA 168/14		150 DA 168	

## SA CATEGORY I ILS - SPECIAL AIRCREW & AIRCRAFT CERTIFICATION REQUIRED

ELEV 19	TDZE 18
---------	---------



TDZ/CL Rwy's  
4R, 15R and 33L  
REIL Rwy's 4L, 27 and 32  
MIRL Rwy 15L-33R  
HIRL Rwy's 4L-22R, 4R-22L,  
9-27, 14-32 and 15R-33L