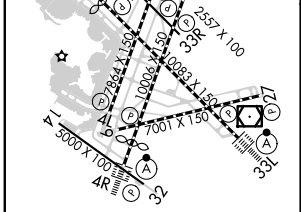
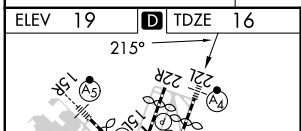
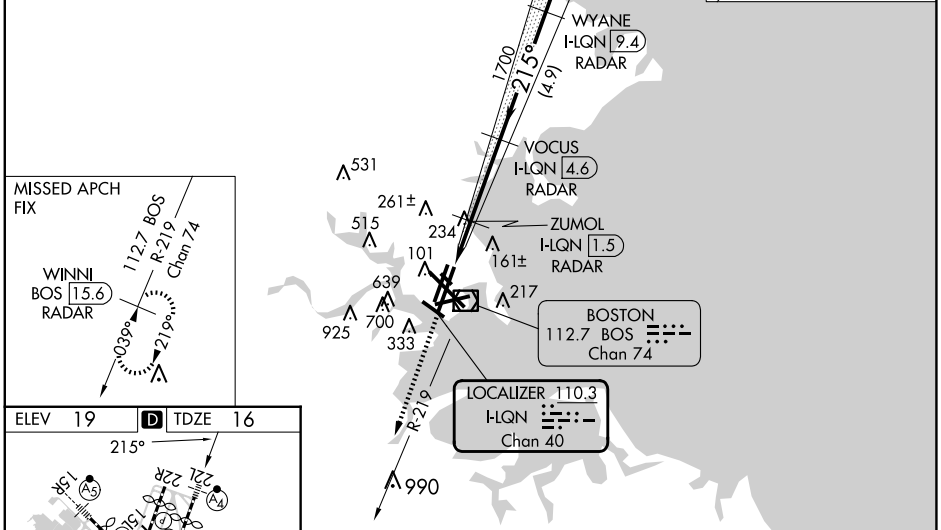
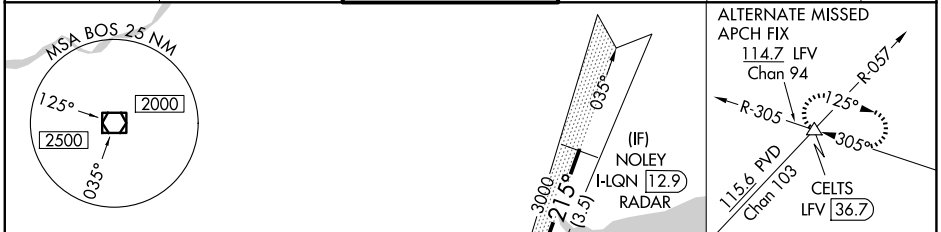


LOC/DME I-LQN <b>110.3</b> Chan <b>40</b>	APP CRS <b>215°</b>	Rwy ldg <b>8806</b> TDZE <b>16</b> Apt Elev <b>19</b>
---	------------------------	---

# ILS or LOC RWY 22L

GENERAL EDWARD LAWRENCE LOGAN INTL (BOS)

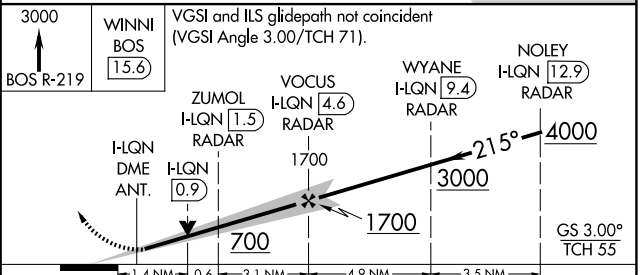
RADAR required for procedure entry. DME or RADAR required. Inop table does not apply to S-ILS 22L.		MALSF 	MISSED APPROACH: Climb to 3000 on BOS VOR/DME R-219 to WINNI/BOS 15.6 DME/RADAR and hold.		
D-ATIS <b>135.0</b>	BOSTON APP CON <b>120.6 263.1</b>	BOSTON TOWER <b>128.8 257.8 (WEST)</b> <b>132.225 257.8 (EAST)</b>	GND CON <b>121.75 121.9</b>	CLNC DEL <b>121.65 257.8</b>	CPDLC



TDZ/CL Rwy 4R, 15R and 33L  
 REL Rwy 4L, 27 and 32  
 MRL Rwy 15L-33R  
 HIRL Rwy 4L-22R, 4R-22L, 9-27, 14-32 and 15R-33L

FAF to MAP 5.1 NM

Knots	60	90	120	150	180
Min:Sec	5:06	3:24	2:33	2:02	1:42



CATEGORY	A	B	C	D
S-ILS 22L	216/40 200 (200-¾)			
S-LOC 22L	540/40	524 (600-¾)	540-1¼	524 (600-1¼)

NE-1, 20 FEB 2025 to 20 MAR 2025

NE-1, 20 FEB 2025 to 20 MAR 2025