

LOC/DME I-BOS 110.3 Chan 40	APP CRS 035°	Rwy Idg 8851 TDZE 18 Apt Elev 19
---	------------------------	---

ILS or LOC RWY 4R

GENERAL EDWARD LAWRENCE LOGAN INTL (BOS)

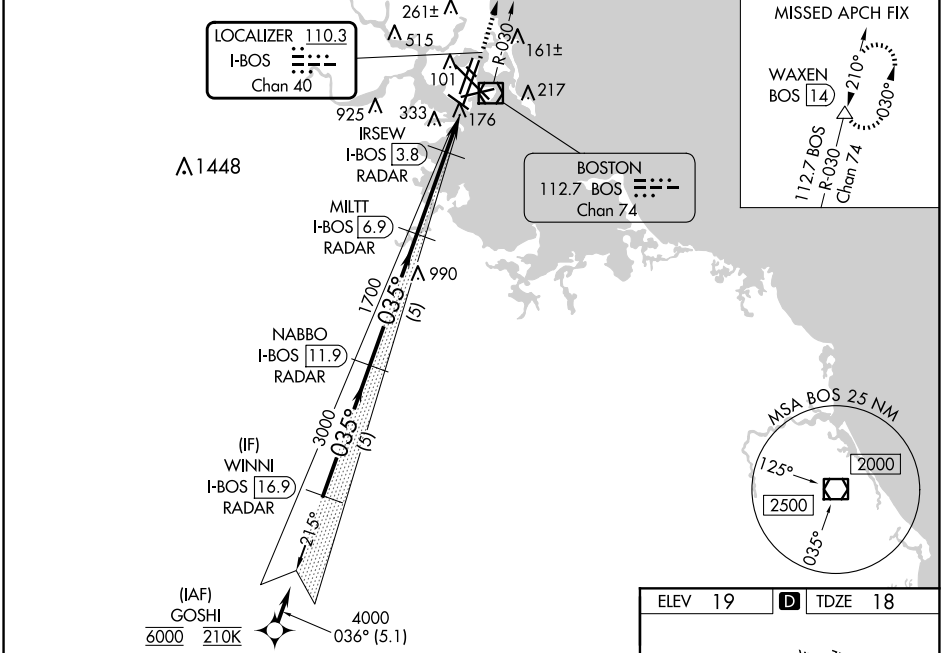
RNP APCH - GPS. From GOSHI.
DME required.

Simultaneous approach authorized. Simultaneous operations require use of vertical guidance; maintain last assigned altitude until established on glideslope.
* For inop ALS increase S-LOC 4R Cat A/B visibility to RVR 5500.
When vessels taller than 144 feet present, S-ILS 4R NA.

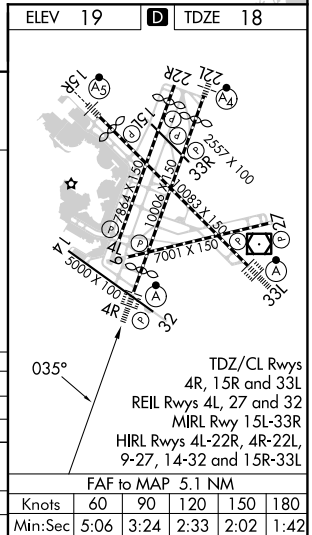
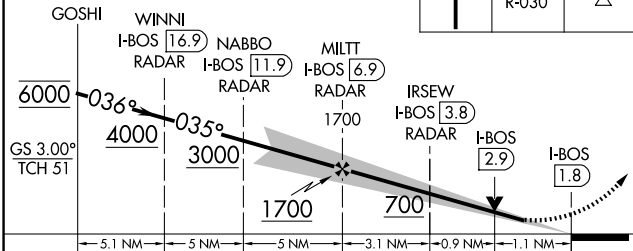


MISSED APPROACH:
Climb to 3000 on BOS VOR/DME R-030 to WAXEN/BOS 14 DME and hold.

D-ATIS 135.0	BOSTON APP CON 120.6 263.1	BOSTON TOWER 128.8 257.8 (WEST) 132.225 257.8 (EAST)	GND CON 121.75 121.9	CLNC DEL 121.65 257.8	CPDLC
------------------------	--------------------------------------	--	--------------------------------	---------------------------------	-------



VGSI and ILS glidepath not coincident (VGSI Angle 3.00/TCH 67).



CATEGORY	A	B	C	D
S-ILS 4R		218/18	200 (200-½)	
S-LOC 4R	440/24	422 (500-½)	440/40	422 (500-¾)
# APPROACH MINIMA WHEN CONTROL TOWER REPORTS TALL VESSELS IN APPROACH AREA				
S-ILS 4R		374/40	356 (400-¾)	
S-LOC 4R*		440/40	422 (500-¾)	