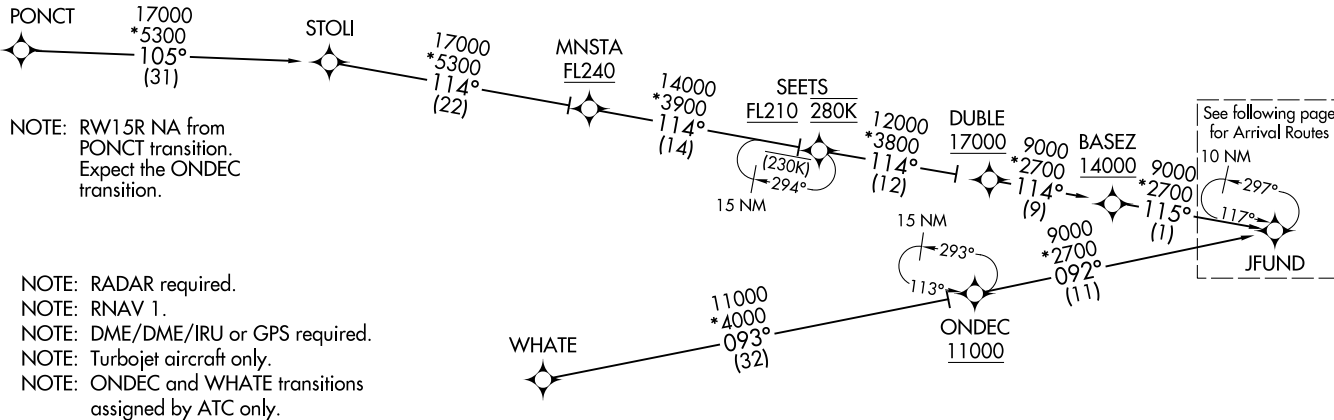


JFUND TWO ARRIVAL (RNAV) Transition Routes
(JFUND.JFUND2) 120CT17

D-ATIS
135.0
BOSTON APP CON
120.6 263.1



NOTE: RW15R NA from PONCT transition. Expect the ONDEC transition.

NOTE: RADAR required.
NOTE: RNAV 1.
NOTE: DME/DME/IRU or GPS required.
NOTE: Turbojet aircraft only.
NOTE: ONDEC and WHATE transitions assigned by ATC only.



NOTE: Not to scale.

(CONTINUED ON FOLLOWING PAGE)

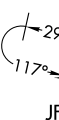
ONDEC TRANSITION (ONDEC.JFUND2):
PONCT TRANSITION (PONCT.JFUND2)
WHATE TRANSITION (WHATE.JFUND2):

(JFUND.JFUND2) 21158
GENERAL EDWARD LAWRENCE LOGAN INTL (BOS)
AL-58 (FAA) BOSTON, MASSACHUSETTS

JFUND TWO ARRIVAL (RNAV) Arrival Routes
(JFUND.JFUND2) 120OCT17
BOSTON, MASSACHUSETTS
GENERAL EDWARD LAWRENCE LOGAN INTL (BOS)

D-ATIS
135.0
BOSTON APP CON
120.6 263.1

10 NM



- NOTE: RADAR required.
- NOTE: RNAV 1.
- NOTE: DME/DME/IRU or GPS required.
- NOTE: Turbojet aircraft only.
- NOTE: ONDEC and WHATE transitions assigned by ATC only.



NOTE: Not to scale.

WACHU
7000 210K

BADCA
9000 250K
9000 2700
090° (5)
*2000 090° (11)

AUTUM
12000 270K
11000

5000 SSAAM *1700
121° (4) *1700 148° (4)



SWIGG

WINTA
10000 250K
8000

ISLAY
6000 220K

HRRIS
112° 4000 *1700 (6)

SPYSD
7000 220K

GGABE
6000 220K

JOBEE
6000 210K

REVER
4000 *1500 115° (3)
4000 *1500 093° (8)

BRODI
6000

GRIFI
4000 *1500 160° (9)
4000 *1500 160° (9)

SCITU
5000 210K

BECHH
5000 220K

SEHAG
6000 210K

LWLND
6000 210K

NOTE: RW15R NA from PONCT transition. Expect the ONDEC transition.

(NARRATIVE ON FOLLOWING PAGE)

(JFUND.JFUND2) 21056
GENERAL EDWARD LAWRENCE LOGAN INTL (BOS)
BOSTON, MASSACHUSETTS
GENERAL EDWARD LAWRENCE LOGAN INTL (BOS)
AL-58 (FAA)

ARRIVAL ROUTE DESCRIPTION

LANDING RUNWAY 4R/L: From JFUND on track 117° to cross AUTUM between 11000 and 12000 and at 270K, then on track 121° to cross WINTA between 8000 and 10000 and at 250K, then on track 120° to HRRIS, then on track 112° to cross SPYSD at 7000 and at 220K, then on track 170° to GRIFI, then on track 213° to cross GGABE at 6000 and at 220K, then on track 213° to cross JOBEE at 6000 and at 210K, then on track 213°. Expect RADAR vectors to final approach course.

LANDING RUNWAY 15R: From JFUND on track 090° to cross BADCA at or above 9000 and at 250K, then on track 090° to cross WACHU at 7000 and at 210K, then on track 121° to SSAAM, then on track 148° to AADMS, then on track 148°. Expect RADAR vectors to final approach course.

LANDING RWY 22R/L: From JFUND on track 117° to cross AUTUM between 11000 and 12000 and at 270K, then on track 121° to cross WINTA between 8000 and 10000 and at 250K, then on track 120° to HRRIS, then on track 079° to cross ISLAY at 6000 and at 220K, then on track 035° to cross LWLND at 6000 and at 210K, then on track 035°. Expect RADAR vectors to final approach course.

LANDING RUNWAY 27: From JFUND on track 117° to cross AUTUM between 11000 and 12000 and at 270K, then on track 121° to cross WINTA between 8000 and 10000 and at 250K, then on track 120° to HRRIS, then on track 112° to cross SPYSD at 7000 and at 220K, then on track 115° to REVER, then on track 093° to cross SEHAG at 6000 and at 210K, then on track 093°. Expect RADAR vectors to final approach course.

LANDING RUNWAYS 32, 33L: From JFUND on track 117° to cross AUTUM between 11000 and 12000 and at 270K, then on track 121° to cross WINTA between 8000 and 10000 and at 250K, then on track 120° to HRRIS, then on track 112° to cross SPYSD at 7000 and at 220K, then on track 144° to cross BRODI at or below 6000, then on track 144° to cross BECHH at 5000 and at 220K, then on track 150° to cross SCITU at 5000 and at 210K, then on track 150°. Expect RADAR vectors to final approach course.

NE-1, 20 FEB 2025 to 20 MAR 2025

NE-1, 20 FEB 2025 to 20 MAR 2025